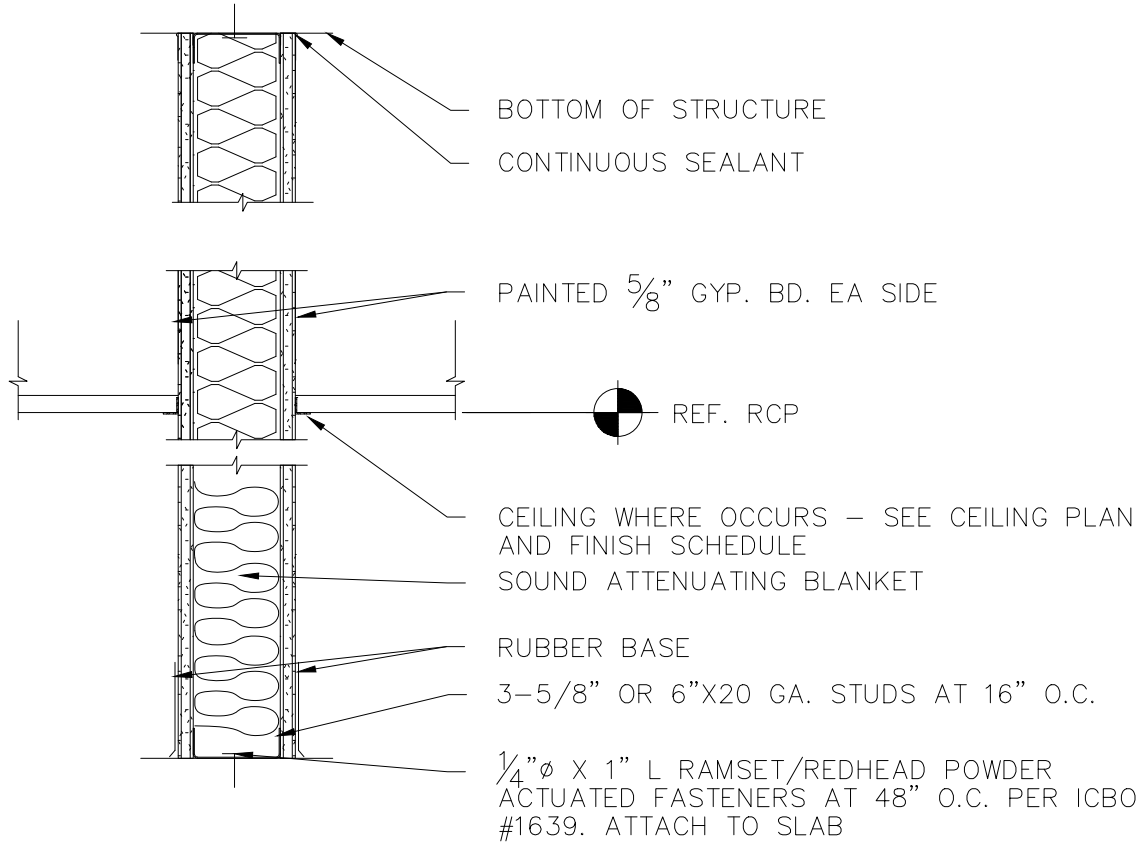


*NOTE: JOG FRAMING AS REQUIRED WHEN WALL IS PERPENDICULAR TO STRUCTURE AND SEAL AT STRUCTURAL CONNECTIONS.



FULL HEIGHT STUD WALL WITH INSULATION

REV. NO. 000

REV. DATE : 02-01-2021

DRAWN BY : NBS

DWG. NO.

AW-02

SCALE : 1 1/2" = 1'-0"