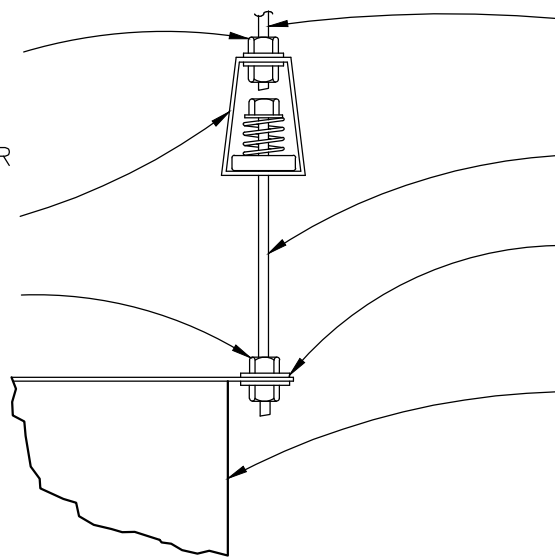


DOUBLE NUT AND
WASHER ASSEMBLY

SPRING MOUNT
VIBRATION ISOLATOR
SECURED TO
ALL-THREAD ROD

DOUBLE NUT AND
WASHER ASSEMBLY



ALL-THREAD ROD—MINIMUM
3/8" DIA UP TO STRUCTURE.
SEE STRUCTURAL
ATTACHMENT DETAIL.

ALL-THREAD ROD—MINIMUM
3/8" DIA.

SUPPORT BRACKET
SUPPLIED WITH UNIT

SUSPENDED EQUIPMENT W/
INTEGRAL SUPPORT BRACKETS



SUSPENDED EQUIPMENT MOUNTING DETAIL

REV. NO. 001

REV. DATE : 10-13-20

DRAWN BY : NBS

DWG. NO.

MP-016

SCALE : NTS