

Coolidge Expansion Project

Live Online Open House
October 2021



Open House Agenda

Welcome

Agenda review

Technology review

Presentation

Question & answer

What to Expect – Question & Answer (Q&A) Period

Welcome

Agenda review

Technology review

Presentation

Question & answer

1 minute to ask question at a time

Queue will stay open until 1:00 PM

More than one question per person is allowed—1 minute at a time, then get back in queue

Open House Agenda

Welcome

Agenda review

Technology review

Presentation

Question & answer

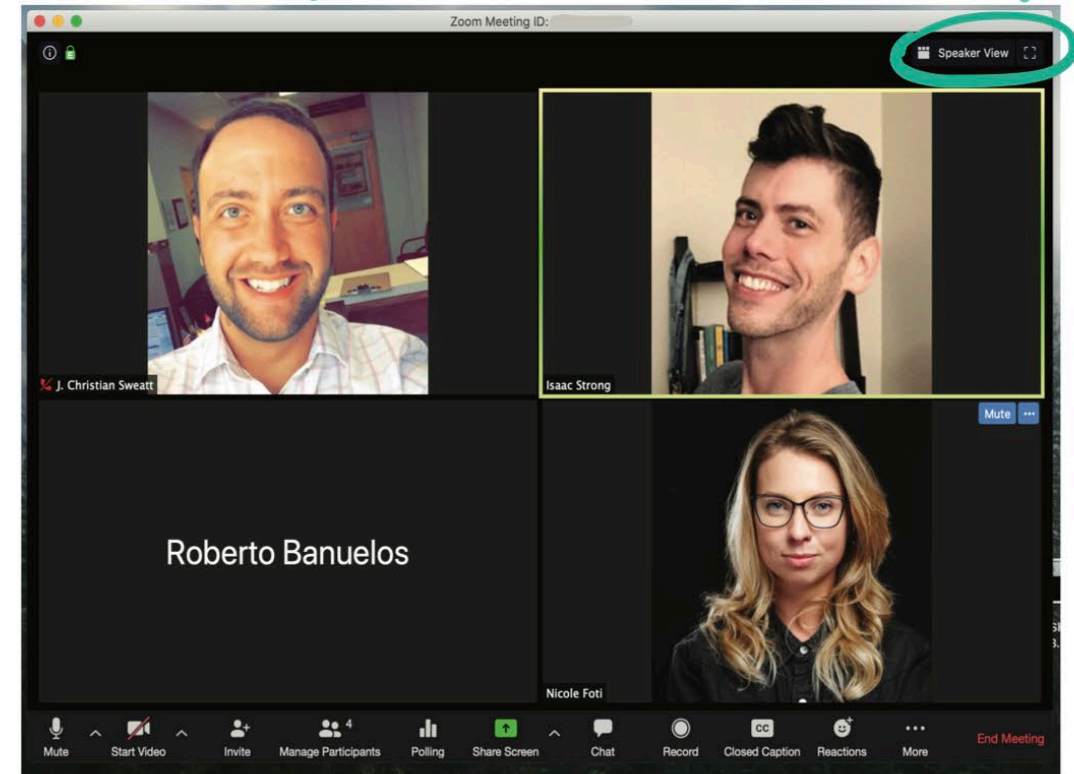
Technology Review – View Options

Speaker view



VS.

Gallery view



switch
back and forth
here

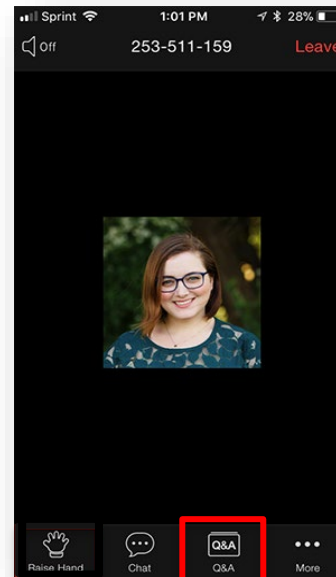


Technology Review – Submit a Written Question

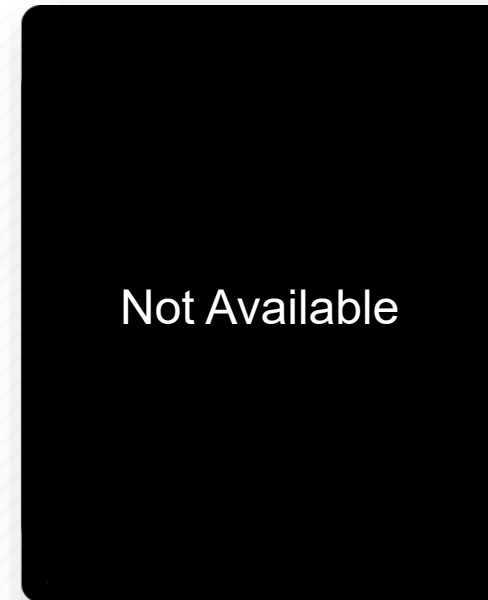


On-Screen Button

Anytime during the open house



Mobile Button



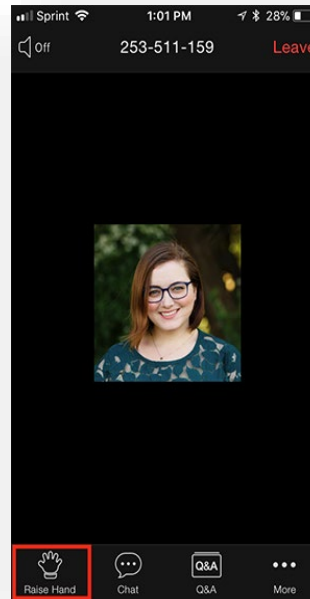
Telephone Keypad

Technology Review – Sign up for Verbal Q&A



On-Screen Button

After the presentation!



Mobile Button



Telephone Keypad

Open House Agenda

Welcome

Agenda review

Technology review

Presentation

Question & answer

Coolidge Expansion Project

Live Online Open House
October 2021

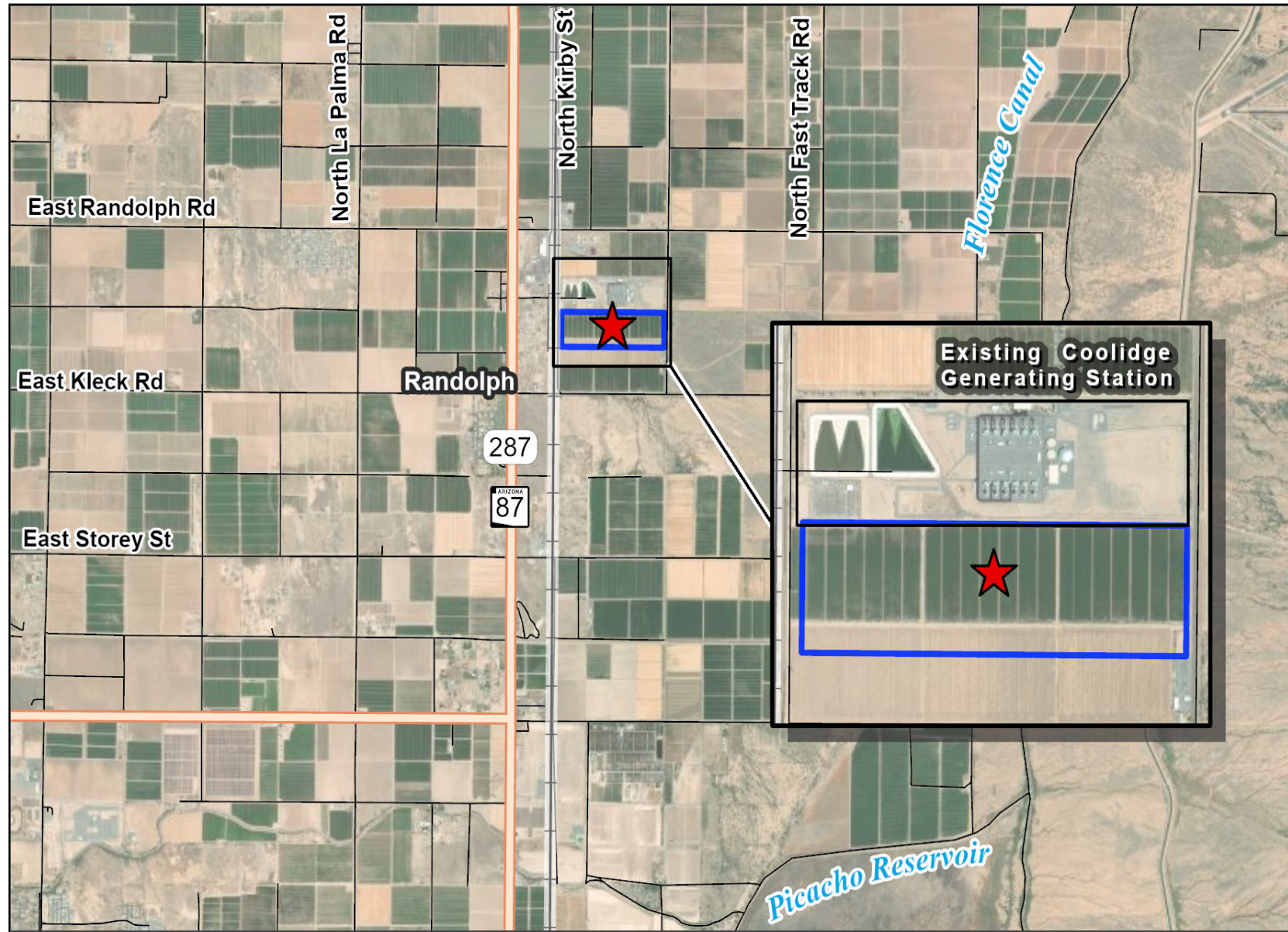




Delivering water
and power®

SRP serves our customers and communities by providing sustainable, reliable and affordable water and energy.

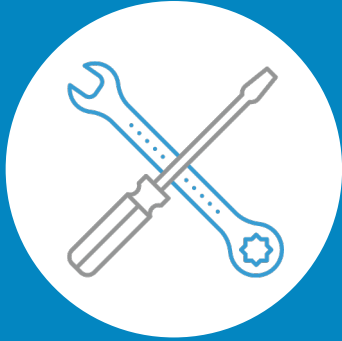
Coolidge Expansion Project Location



Strong Economic Growth Ahead

- **Arizona has the #1 fastest growing county in the U.S.**
- The **Southwest** is becoming America's advanced manufacturing hub
- **Housing permits are at the highest since mid-2000's:** Over 100 every day

Coolidge Expansion Project



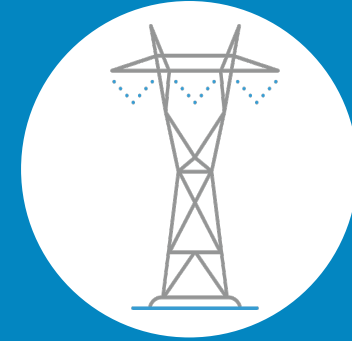
Reliability

- Serves near-term growth
- Quick start, fast ramping
- Mature technology



Sustainability

- Low utilization
- Enables more renewables
- Hydrogen capable
- Low water use



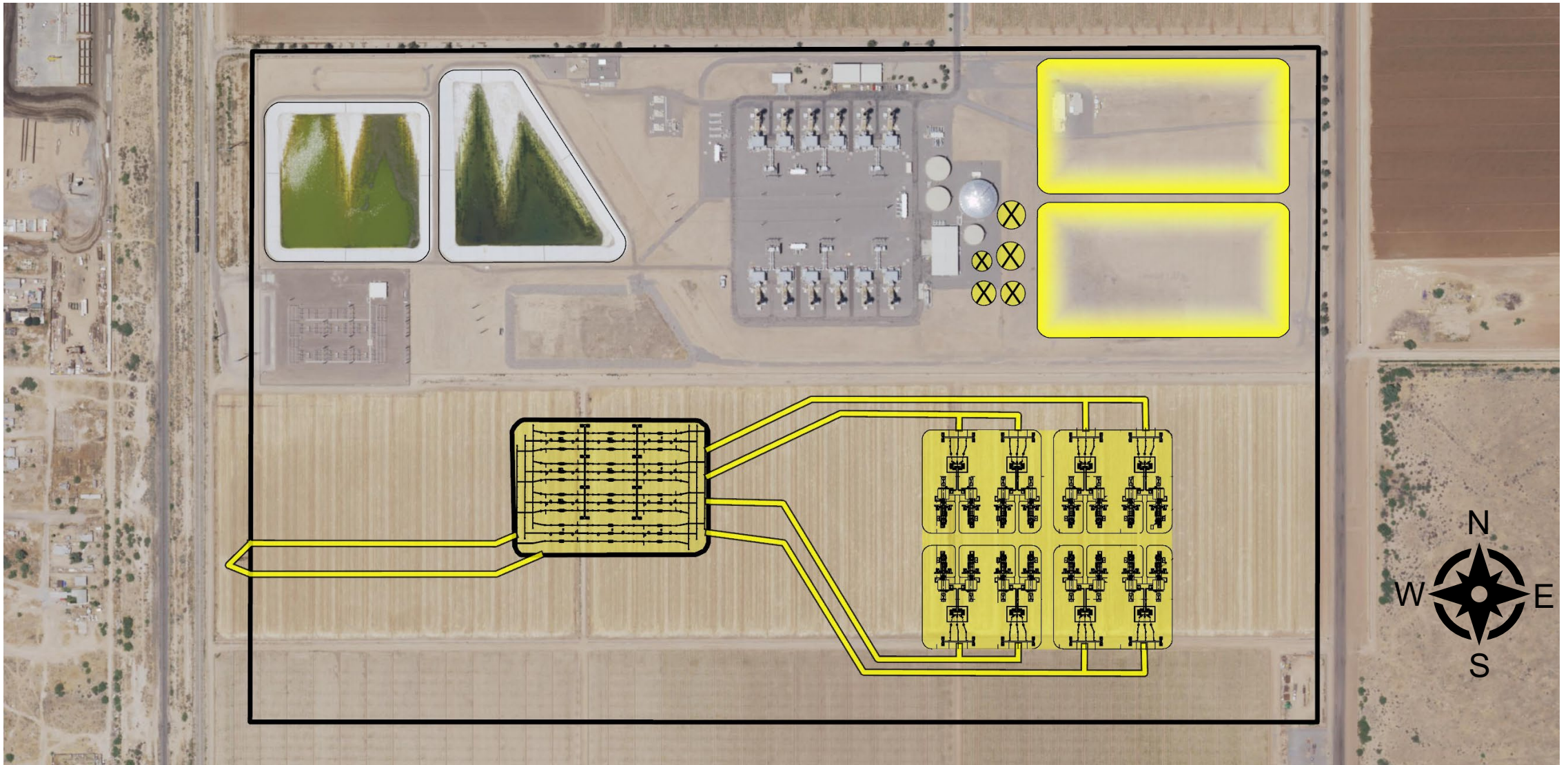
Affordability

- Best value for SRP customers

Coolidge Generating Station



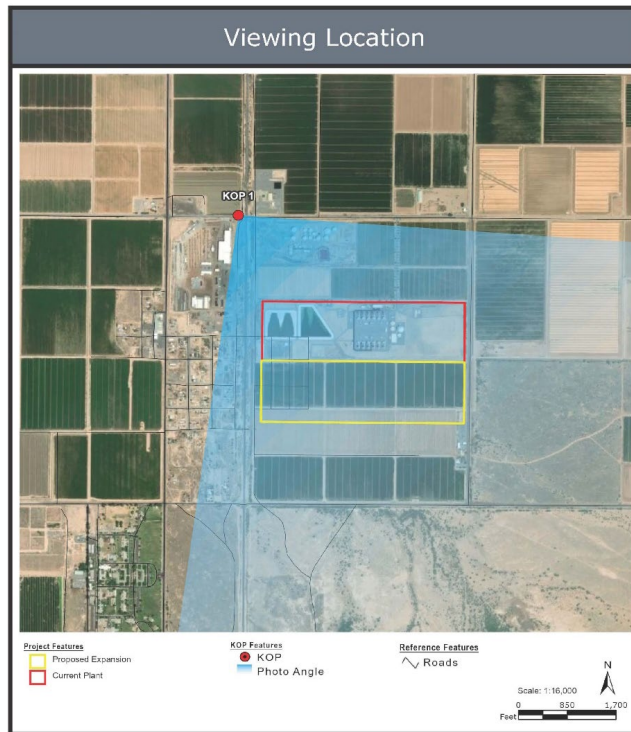
Coolidge Expansion Project



Simulation

Key Observation Point 1

- Randolph Road and 5th Avenue
- Looking southeast at the Project



Existing Condition

KOP 1: View from Randolph Road and 5th Avenue looking southeast



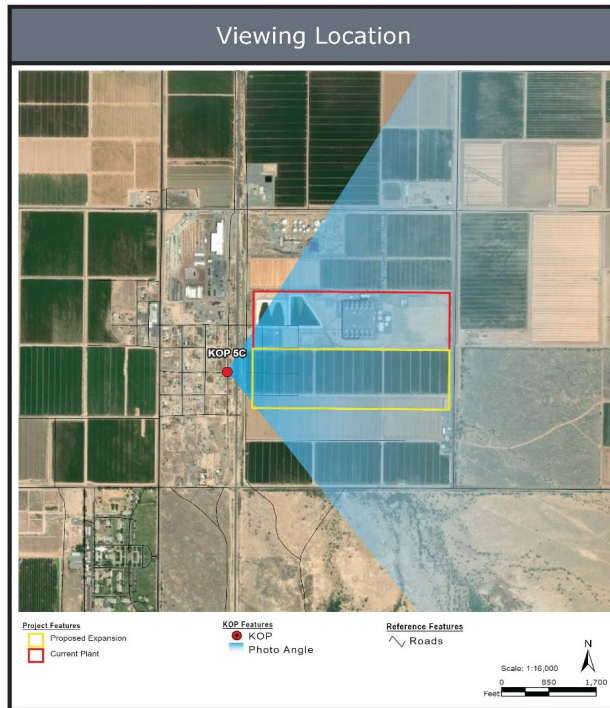
Simulated Condition

KOP 1: View from Randolph Road and 5th Avenue looking southeast

Simulation

Key Observation Point 5C

- East Malcom X Street and North Hughes Street
- Looking east at the Project



Existing Condition

KOP 5C: View from residence at East Malcom X Street and North Hughes Street looking east



Simulated Condition

KOP 5C: View from residence at East Malcom X Street and North Hughes Street looking east

Simulation

Key Observation Point 7

- North Vail Road and East Kleck Road
- Looking northwest at the Project



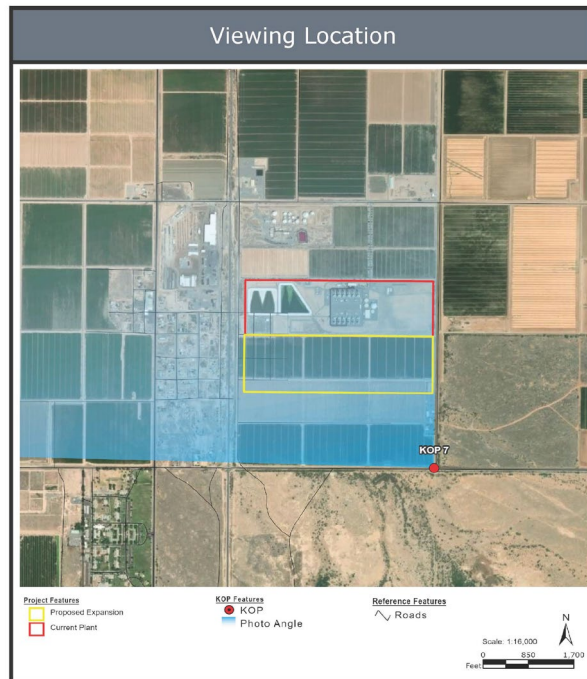
Existing Condition

KOP 7: View from North Vail Road and East Kleck Road looking northwest



Simulated Condition

KOP 7: View from North Vail Road and East Kleck Road looking northwest



Environmental Analysis

Environmental Review and Analysis

- Air Quality
- Biological Resources
- Cultural and Historical Resources
- Water and Hydrology
- Land Use
- Noise
- Visual and Aesthetics

Arizona Corporation Commission (ACC) Certificate of Environmental Compatibility (CEC) Process

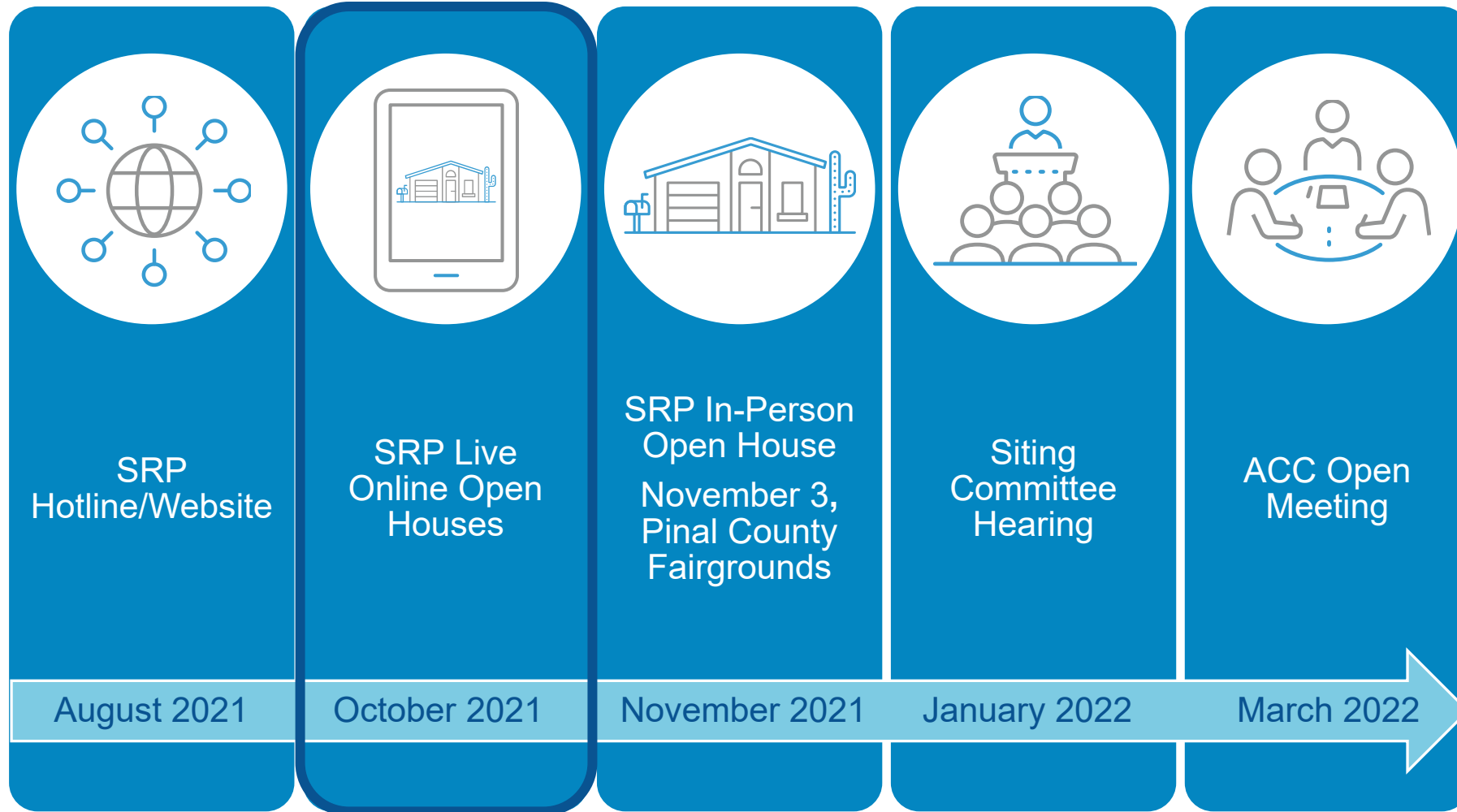


Environmental Review and Analysis



Public Involvement

Opportunities for Public Involvement



Learn More

srpnet.com/cep | (888) 705-1509
azcc.gov/arizona-power-plant/line-siting-committee



thank you!

Open House Agenda

Welcome

Agenda review

Technology review

Presentation

Question & answer

Learn More & Comment

srpnet.com/cep | (888) 705-1509

azcc.gov/arizona-power-plant/line-siting-committee



Ground Rules for Q&A

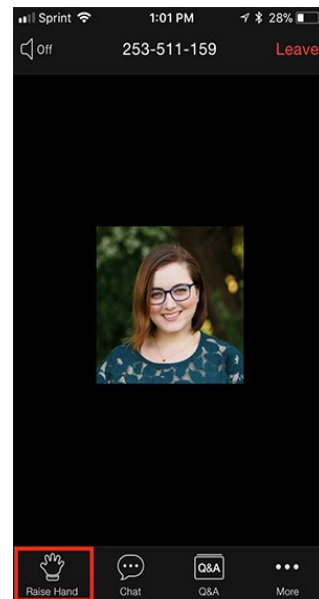
- At the start of your time: Say your first and last name and affiliation.
- Refrain from questions that contain:
 - Vulgar or abusive language
 - Personal attacks of any kind
 - Offensive terms that target specific groups
- Be respectful to participants, presenters, and panelists.
- Remember, participants may be joining from locations where family members and children can hear what is being said.
- Remember, you have 1 minute to ask your question

Q&A Period – Sign up for Verbal Q&A

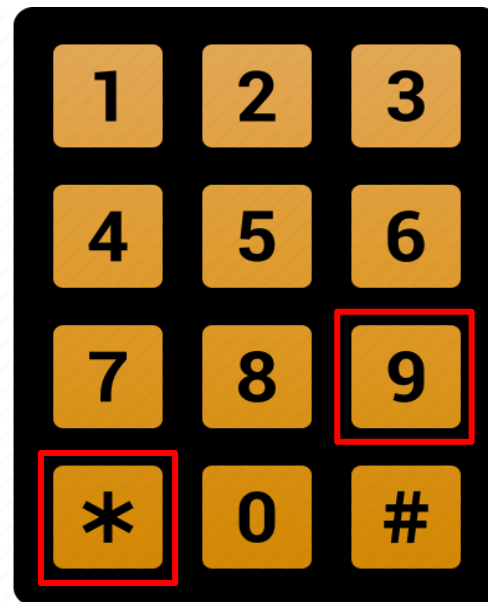
Check for
speaker order



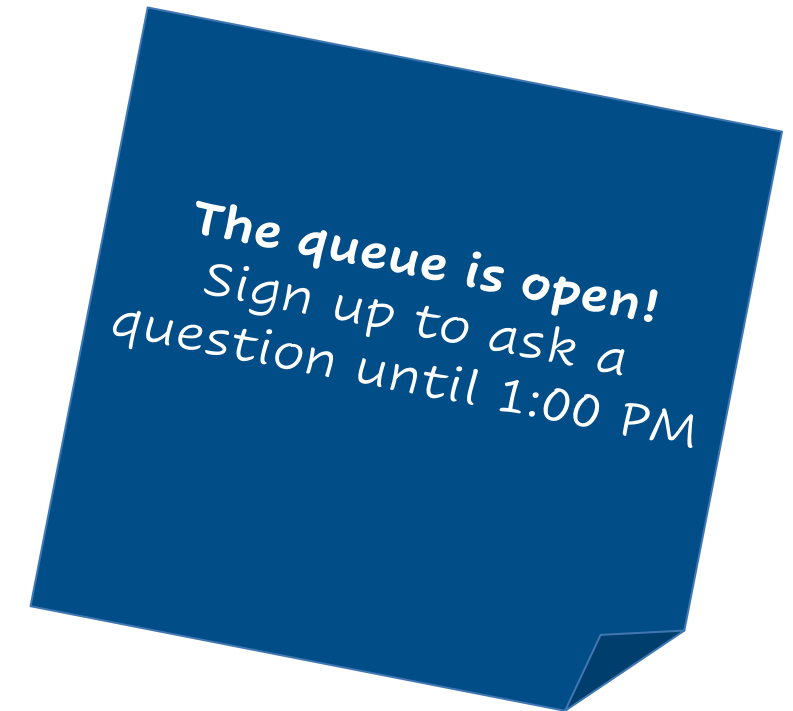
On-Screen Button



Mobile Button



Telephone Keypad



Learn More

srpnet.com/cep | (888) 705-1509
azcc.gov/arizona-power-plant/line-siting-committee

