

EXHIBIT J – SPECIAL FACTORS

*As stated in the Arizona Corporation Commission Rules of Practice and Procedure R14-3-219:
Describe any special factors not previously covered herein, which applicant believes to be
relevant to an informed decision on its application.*

Introduction

This exhibit includes information on the public and agency involvement program that has been conducted for the Project. The outreach efforts provided information to members of the public and agencies, solicited feedback on the Project, and were designed to help identify potential issues relative to the Project.

Public Involvement Program Summary

The public involvement program was conducted to ensure that local jurisdictions, relevant agencies, and community residents or property owners were provided with the opportunity to receive and relay information.

To contact the potentially affected residents and agencies, SRP developed and held multiple public participation measures and activities, including informational letters, a Project website, Facebook/Instagram/Nextdoor social media ads, newspaper advertisements, a telephone information line, in-person and virtual open houses, and focused outreach (door-to-door communication).

Informational Letters

SRP hand-delivered an invitation to the October 16, 2021, community event (see Open Houses, below) to residents in the Randolph community. A copy of this invitation is shown in Exhibit J-1a.

SRP also sent three public notifications to all property owners and residents within 7 miles of the Project as part of the CEC public involvement process. The first informational notice was mailed on August 31, 2021, and included an introduction to the Project and Coolidge Generating Station facility and announced the virtual open house. The second notification was sent on October 7, 2021, to announce details about the four live online open houses and first in-person open house. The third notification was sent on November 17, 2021, to announce details about the second in-person open house. These notifications are shown in Exhibits J-1b, J-1c, and J1-d.

Website and Social Media

The Project website srpnet.com/cep was created as a central location to provide stakeholders and interested parties with updates, general Project information, and opportunities for public comment. The website also included Project information in videos, maps, and frequently asked questions (FAQs). Interested parties were able to visit and review materials at their convenience and submit comments and questions through an embedded comment form. A copy of the website content is shown in Exhibits J-2a through J-2f, including a copy of the electronic comment form. The Project website was also made available in Spanish. An example of the Spanish website content is shown in Exhibit J-2g.

Facebook, Instagram, and Nextdoor were used to reach additional interested parties and announce the virtual open house, live online open house events, and the in-person open houses. Advertisements for the

virtual open house were run on Facebook in English, and in Spanish, from September 23 to 30, 2021. Advertisements for the live online open house events were run on these social media platforms in English, and in Spanish on Facebook and Instagram, from October 13 to 20, 2021. Advertisements for the in-person open houses were run in English on these social media platforms, and in Spanish on Facebook and Instagram, from October 26 to November 2, 2021, and on December 1 to December 9. A copy of the advertisements is shown in Exhibits J-3a and J-3c.

Media Relations

SRP placed advertisements in the *Coolidge Examiner/Casa Grande Dispatch* on October 27, 2021, and December 1, to announce the in-person open houses held at the Pinal County Fairgrounds and Artisan Village respectively, and to provide general information about the Project and additional opportunities for comment through the telephone information line and the Project website.

A copy of the advertisements placed in the *Coolidge Examiner/Casa Grande Dispatch* is included in Exhibit J-4.

Telephone Line

SRP provided additional opportunity for members of the public to leave comments or questions by creating a telephone information line. The telephone number was provided in the informational notices, Project website, and newspaper advertisement. The telephone line informed callers about where to find Project information online and invited questions and comments. All voice messages requesting further information were returned within approximately 24 hours by a Project team member, unless they were received on a weekend or holiday.

Agency and Local Official Briefings

Throughout the Project process, team members held meetings with local jurisdiction and agency representatives, including elected officials and planning staff, and others to relay information about the Project, answer questions, and request feedback. These meetings enabled the Project team to identify stakeholder issues and relay information about developments in the Project. Agency and other stakeholder meetings are included in Table J-1.

Community Event and Open Houses

SRP hosted a 2-hour community event on October 16, 2021, at the New Life Christian Center in Randolph, Arizona. The event included information about the Project, lunch and beverages for attendees, and an activity for children. The project handout provided at the community event is included as Exhibit J-5.

SRP hosted four 1-hour live online open houses to provide stakeholders and interested parties with Project information and the opportunity to ask questions about the Project. The live online open houses were held on October 20 and 21, 2021. Each day included an afternoon and evening session. Each session included a presentation with information about the Project and the CEC process, and time for attendees to ask questions of the Project team. The presentation is shown in Exhibit J-6.

SRP also hosted two 2-hour, in-person open houses on November 3, 2021, at the Pinal County Fairgrounds and on December 9, 2021, at the Artisan Village in Coolidge, Arizona. Each event included posters with information about the Project and the CEC process and an opportunity for attendees to ask

questions of the Project team and submit written comments. The posters are included as Exhibit J-7a. The project handout provided at the in-person open house is included as Exhibit J-7b.

Public Comment

Throughout the public involvement program, comments from the public were solicited and considered in the planning process. As part of the public involvement program, comments from multiple individuals, agencies, or jurisdiction representatives were received. Comments were submitted either by written comment form, by email or voicemail, or made verbally during meetings and briefings. All requests for response or additional information were addressed by a Project team member.

Most of the comments received were questions about the location and look of the Project, along with questions about the Project need and how the Project may impact health, safety, and accessibility within the region.

A listing of stakeholder interactions is presented in Table J-1.

Table J-1. Project Stakeholder Interaction Summary

Name	Affiliation	Interaction Date	Interaction Type (email, telephone hotline, postal mail, briefing)	Summary of Public Comment/Question
Anna Tovar	Commissioner	6/15/2021	Briefing	Regulatory Policy briefed Commissioner Tovar-future load needs
Jim O'Connor	Commissioner	6/16/2021	Briefing	Regulatory Policy briefed Commissioner O'Connor-future load needs
Justin Olson	Commissioner	6/16/2021	Briefing	Regulatory Policy briefed Commissioner Olson-future load needs
Lea Márquez-Peterson	Commissioner	6/16/2021	Briefing	Regulatory Policy briefed Chairwoman Márquez-Peterson
Casey Saxton	ED2	7/28/2021	Phone call outgoing	Outreach assistance
Lea Márquez-Peterson	Commissioner	8/10/2021	Briefing	Initial project briefing
Dan Schweibert	Chairwoman Lea Márquez Peterson	8/10/2021	Briefing	Initial project briefing
Madison Doyle	Chairwoman Lea Márquez Peterson	8/10/2021	Briefing	Initial project briefing
Justin Olson	Commissioner	8/10/2021	Briefing	Initial project briefing
Leo Lew	Pinal County Manager	8/10/2021	Briefing	Initial project briefing
Kevin Kavanagh	Pinal County Supervisor	8/10/2021	Briefing	Initial project briefing
Michael Clark	Commissioner Justin Olson	8/10/2021	Briefing	Initial project briefing
Nick Meyers	Commissioner Justin Olson	8/10/2021	Briefing	Initial project briefing
Jim O'Connor	Commissioner	8/11/2021	Briefing	Initial project briefing
Tom Broderick	Commissioner Jim O'Connor	8/11/2021	Briefing	Initial project briefing
Katherine White	Co-Pastor at The New Life Christian Center	8/11/2021	Phone call outgoing	Initial project briefing
Ray Peace	Pastor at The Church of Christ of Randolph	8/11/2021	Phone call outgoing	Initial project briefing
Melvin Moore	Randolph Resident	8/11/2021	Phone call outgoing	
Mary Peace	Married to Pastor Ray Peace	8/11/2021	Text Message	Providing contact information

Name	Affiliation	Interaction Date	Interaction Type (email, telephone hotline, postal mail, briefing)	Summary of Public Comment/Question
Buchanan Davis	Governor Ducey's office	8/12/2021	Briefing	Initial project briefing
Jordy Fuentes	House Majority Staff	8/12/2021	Briefing	Project briefing in-person Jordy Fuentes, Policy Advisor House Majority Staff Alan Eder, Megan Martin
David Cook	Arizona House of Representatives	8/12/2021	Briefing	Project briefing (zoom) Rep. David Cook, Legislative District 8 Alan Eder, Megan Martin & Jason Baran (SRP)
Jon Thompson	Mayor of the City of Coolidge	8/12/2021	Briefing	Initial project briefing
Vicente Reyna	Senate Minority Staff	8/12/2021	Briefing	Zoom Briefing Vicente Reyna, Policy Advisor, Senate Minority Staff Alan Eder, Megan Martin and Jason Baran- Initial project briefing
Zach Branum	ACC Staff	8/12/2021	Briefing	Teams Briefing ACC Staff – Zach Branum, Briton Baxter, Renelle Palladino David Felix, Manny Tarango- Initial project briefing
Briton Baxter	ACC Staff	8/12/2021	Briefing	Teams Briefing ACC Staff – Zach Branum, Briton Baxter, Renelle Palladino, David Felix, Manny Tarango- Initial project briefing
Ranelle Palladino	ACC Staff	8/12/2021	Briefing	Teams Briefing ACC Staff – Zach Branum, Briton Baxter, Renelle Palladino, David Felix, Manny Tarango- Initial project briefing
Anna Tovar	Commissioner	8/13/2021	Briefing	Initial project briefing
Jeff Jordan	Randolph Resident	8/17/2021	Phone call outgoing	Initial project briefing
Mary Turner	Randolph Resident	8/17/2021	Phone call outgoing	Initial project briefing
TJ Shope	Senator R-Coolidge	8/17/2021	Briefing	M. Martin and J. Baran briefed Senator Shope- Initial project briefing
Sine Kerr	Legislative District 13 R-Buckeye	8/17/2021	Briefing	M. Martin and J. Baran briefed Senator Kerr- Initial project briefing
Buchanan Davis	Governor Ducey's office	8/18/2021	Briefing	M. Martin & J. Baran briefed B. Davis- initial project- Initial project briefing
Anna Tovar	Commissioner	8/19/2021	Briefing	Initial project briefing
Mary Turner	Randolph Resident y	8/20/2021	Phone call outgoing	Randolph partnership ideas
Casey Saxton	ED2	8/24/2021	Email outgoing	Initial project briefing
Jeff Jordan	Randolph Resident	8/24/2021	Email outgoing	Provided project website

Name	Affiliation	Interaction Date	Interaction Type (email, telephone hotline, postal mail, briefing)	Summary of Public Comment/Question
Katherine White	Co-Pastor at The New Life Christian Center	8/24/2021	Email outgoing	Provided project website
Ray Peace	Pastor at The Church of Christ of Randolph	8/24/2021	Phone call outgoing	Project update
Eric Daniels	City of Coolidge Councilmember	8/25/2021	Briefing	Initial project briefing
Rick Miller	Coolidge City Manager	8/25/2021	Briefing	Initial project briefing
Tatiana Murrieta	City of Coolidge Councilmember	8/25/2021	Briefing	Initial project briefing
Benjamin Navarro	City of Coolidge Councilmember	8/27/2021	Briefing	Initial project briefing
Jacque Hendrie	City of Coolidge Councilmember	8/27/2021	Briefing	Initial project briefing
Gilbert Lopez	City of Coolidge Development Services Director	8/27/2021	Briefing	Initial project briefing
Candice Hughes	Member of the public	8/30/2021	Phone call incoming	Ms. Hughes called SRP Corporate Secretary's office-opposes the project
Jeff Jordan	Randolph Resident	8/30/2021	Phone call outgoing	Confirmed Jeff received the email with the project website.
Katherine White	Co-Pastor at The New Life Christian Center	8/30/2021	Phone call outgoing	Left voice message to confirm Katherine received the email with the project website
Mary Turner	Randolph Resident	9/3/2021	Phone call outgoing	Randolph event ideas
Ray Peace	Pastor at The Church of Christ of Randolph	9/3/2021	Phone call outgoing	Randolph event ideas
Josh Steed	Member of the public	9/4/2021	Web Site Comment	Interested in SRP providing service to the City of Coolidge
Victoria Moore	Member of the public	9/8/2021	Phone call incoming	Interested in rooftop solar and wanted to know if this project would raise her rates with APS and SW Gas.

Name	Affiliation	Interaction Date	Interaction Type (email, telephone hotline, postal mail, briefing)	Summary of Public Comment/Question
Blake Sacha	Member of the public	9/8/2021	Web Site Comment	I am an SRP customer, and I oppose this expansion. We shouldn't be buying natural gas from outside of our state when we have plenty of our own sunshine. There are better options to satisfy peak demand including providing incentives to homeowners to reduce peak demand and adding solar generation and storage capacity. If we are going to make an impact on climate change, we must stop investing in fossil fuel burning technology.
Katherine White	Co-Pastor at The New Life Christian Center	9/13/2021	Email Incoming	Randolph event planning
Kevin Kanaat	Member of the public	9/13/2021	Web Site Comment	Inquired if a ratepayer impact analysis was done during the proposal? Why SRP did not release a technology neutral, competitive bid and let the free market offer up solutions? What the planned CO2 and methane emissions of the plant over its projected lifespan were?
Bob McCaskey	Western Emulsions	9/14/2021	Email outgoing	Initial project briefing
Les McCauley	Stinger Bridge & Iron	9/14/2021	Meeting	Initial project briefing
Matt McCormick	Pinal Land Holdings & Saint Holdings & Coolidge Chamber of Commerce	9/14/2021	Briefing	Initial project briefing
Rhonda (last name not provided)	Member of the public	9/14/2021	Phone call incoming	Opposes the project
Scott Casler	Hummel Engine & Machining LLC	9/14/2021	Meeting	Initial project briefing
Tonia Schultz	Arizona Training Program	9/14/2021	Meeting	Initial project briefing
Jeff Jordan	Randolph Resident	9/15/2021	Phone call outgoing	Project update

Name	Affiliation	Interaction Date	Interaction Type (email, telephone hotline, postal mail, briefing)	Summary of Public Comment/Question
Sandra Kennedy	Commissioner	9/15/2021	Briefing	Initial project briefing
Jannine Mathis	Member of the Public	9/16/2021	Web Site Comment	Please review other energy options for the extra electricity needed. Wind and solar are not experimental and they are competitive in price.
Sylvia Dickinson	Member of the Public	9/22/2021	Web Site Comment	Inquired to find out how the proposed Coolidge Expansion Project will affect family's land
Estella Dun	Randolph Resident	9/24/2021	Phone call incoming	Estella had basic project questions. SWCA informed her on the open house options coming soon and the Randolph event. Estella asked if we were doing any studies because she has heard about cancer clusters near power plants. Advised that we will be doing studies including, biological, cultural, ground water.
Katherine White	Co-Pastor at The New Life Christian Center	9/27/2021	Email outgoing	Randolph partnership ideas
Mary Turner	Randolph Resident	9/27/2021	Phone call outgoing	Health concerns
Ray Peace	Pastor at The Church of Christ of Randolph	9/27/2021	Phone call outgoing	Gas pipeline concerns
Jeff Jordan	Randolph Resident	9/29/2021	Text Message	Randolph partnership ideas
Jasmine Moore-Reece	Randolph Resident	9/30/2021	Phone call outgoing	Initial project briefing
Jeff Jordan	Randolph Resident	9/30/2021	Phone call incoming	Jeff Jordan called C. Hallows
Kyle Muldrow	Randolph Resident	10/1/2021	Meeting	Randolph partnership ideas
Mary Turner	Randolph Resident	10/1/2021	Meeting	Opposes the project
Matt McCormick	Pinal Land Holdings & Saint Holdings & Coolidge Chamber of Commerce	10/1/2021	Email Incoming	Mr. McCormick inquired if SRP can share a site plan and any elevation/renderings so he could understand exactly what will be adjacent to his property to the south of the Project. Mr. McCormick also had additional questions about project specific information.
Autumn Johnson	Member of the public	10/1/2021	Web Site Comment	SRP should NOT move forward with this Coolidge Expansion Project without a meaningful stakeholder process and a formal RFP. There is simply not enough information for them to move forward with such a massive investment in such a dated technology that does not acknowledge the clean energy transition. SRP also needs to update its carbon goals to a mass based standard. An intensity goal is meaningless.

Name	Affiliation	Interaction Date	Interaction Type (email, telephone hotline, postal mail, briefing)	Summary of Public Comment/Question
Amish Shah	Legislative District 24	10/6/2021	Briefing	Initial project briefing
Bob McCaskey	Western Emulsions	10/7/2021	Email outgoing	Open house invite
Les McCauley	Stinger Bridge & Iron	10/7/2021	Email outgoing	Open house invite
Tonia Schultz	Arizona Training Program	10/7/2021	Email outgoing	Open house invite
Matt McCormick	Pinal Land Holdings & Saint Holdings & Coolidge Chamber of Commerce	10/7/2021	Email outgoing	Open house invite
Ray Peace	Pastor at The Church of Christ of Randolph	10/7/2021	Email outgoing	Open house invite
Kyle Muldrow	Randolph Resident	10/7/2021	Email outgoing	Open house invite
Mary Turner	Randolph Resident	10/7/2021	Email outgoing	Open house invite
Katherine White	R Randolph Resident	10/7/2021	Email outgoing	Open house invite
Ray Peace	Pastor at The Church of Christ of Randolph	10/7/2021	Phone call outgoing	Randolph partnership ideas
Jeff Jordan	Randolph Resident	10/7/2021	Email outgoing	Open house invite
Paul Klussman	Member of the Public	10/11/2021	Phone call incoming	Wanted to know more about the project and how it will affect this property.
Gabrielle Lawrence	Member of the public	10/28/2021	Phone call incoming	<p>Called in to express her opinion about the expansion of the gas plant in Coolidge. Gabrielle is not in favor of the project and thinks we should be building solar and wind farms, instead of expanding our methane gas into the atmosphere. She does not believe we need any more expansions on gas and that money needs to be put towards solar, wind, or whatever is going to help us instead of expanding gas.</p> <p>Gabrielle provided information about the coal debt securitization plan, that helps fuel plants that have external debts to pay those off while expanding solar at the same time. This information can be found on the "Matter of Degrees" podcast.</p> <p>Gabrielle does not support expansion of any fossil fuel plants at this point and believes we need to put all of our energy into sustainability here in Arizona specifically.</p>
Richard Sigler	Member of the public	10/15/2021	Web Site Comment	I would like to know more about this project. With renewables now cheaper than fossil fuels, why are we putting money into this project?

Name	Affiliation	Interaction Date	Interaction Type (email, telephone hotline, postal mail, briefing)	Summary of Public Comment/Question
Jeff Jordan	Randolph Community	10/16/2021	Text message outgoing	
Randolph Community Event		10/16/2021	Community event	
Katherine White	Randolph Resident	10/22/2021	Mail outgoing	Thank you
Mary Turner	Randolph Resident	10/22/2021	Mail outgoing	Thank you
Rick Miller	Coolidge City Manager	10/25/2021	Briefing	Project Update
Eric Veras	Member of the public	10/26/2021	Phone call incoming	Eric calling on behalf of his sister regarding her property. Interested in selling to a solar project.
Jakob Andersen	Saint Holdings LLC	10/26/2021	Meeting	Initial project briefing
Matt McCormick	Pinal Land Holdings & Saint Holdings & Coolidge Chamber of Commerce	10/26/2021	Meeting	Project Update
Gabrielle Lawrence	Member of the public	10/11/2021	Web Site Comment	I am not in favor of the expansion of the Coolidge gas plant. I would like us to spend any expansion money on sustainable technologies such as solar and wind.
Stacey Champion	Member of the public	10/29/2021	Email Incoming	What agencies (state and federal) you need to seek approval from for this expansion, as well as what/if any environmental impacts/studies/data has been collected for this project?
Stacey Champion	Member of the public	10/29/2021	Web Site Comment	Inquired to find out if an Environmental Impact Statement (EIS) had been completed for the project and if so where it is publicly located.
Ben Heglie	Land Advisors, part owner of parcels 40133002B &A	11/2/2021	Phone call outgoing	Initial project briefing
Ray Peace	Pastor at The Church of Christ of Randolph	11/4/2021	Phone call incoming	Pastor Peace called C. Hallows
Ron Jordan	Randolph Resident	11/4/2021	Phone call incoming	Ron expressed concern with how Randolph will benefit from this expensive expansion.
Rick Miller	Coolidge City Manager	11/5/2021	Phone call outgoing	Discussed possible locations for a second in-person open house.
Jacob Beach	Solar Contractor	11/9/2021	Phone call incoming	Jacob stated he is a solar contractor who works in Coolidge. Asked general questions.

Name	Affiliation	Interaction Date	Interaction Type (email, telephone hotline, postal mail, briefing)	Summary of Public Comment/Question
Marta Darby	Member of the public	11/9/2021	Web Site Comment	Inquired about the E3 study mentioned in the FAQ's for the project.
Cheri Boucher	Arizona Game and Fish Department	11/10/2021	Email Incoming	Burrowing owl concern (letter provided in Exhibit C-3)
Lea Márquez-Peterson	Commissioner	11/15/2021	Briefing	Project Update
Mary Turner	Randolph Resident	11/15/2021	Email incoming	Budget Question
Mary Turner	Randolph Resident	11/15/2021	Phone call outgoing	Project Update
Katherine White	Co-Pastor at The New Life Christian Center	11/15/2021	Phone call outgoing	Randolph partnership ideas
Ron Jordan	Randolph Resident	11/15/2021	Phone call incoming	Open house invite
Kyle Muldrow	Randolph Resident	11/15/2021	Phone call outgoing	Project update
Ray Peace	Pastor at The Church of Christ of Randolph	11/15/2021	Phone call incoming	Open house invite
Jeff Jordan	Randolph Resident	11/15/2021	Phone call incoming	Open house invite
Ben Heglie	Land Advisors, part owner of parcels 40133002B & A	11/15/2021	Phone call incoming	Open house invite
Matt McCormick	Pinal Land Holdings & Saint Holdings & Coolidge Chamber of Commerce	11/15/2021	Phone call incoming	Open house invite
Tonia Schultz	Arizona Training Program	11/15/2021	Phone call incoming	Open house invite
Les McCauley	Stinger Bridge & Iron	11/15/2021	Phone call incoming	Open house invite
Bob McCaskey	Western Emulsions	11/15/2021	Phone call incoming	Open house invite
Jeff Jordan	Randolph Resident	11/15/2021	Phone call incoming	Opposes the project
Jim O'Connor	Commissioner	11/16/2021	Briefing	Project update
Sandra Kennedy	Commissioner	11/16/2021	Briefing	Project update
Jeff Jordan	Randolph Resident	11/16/2021	Text message	Budget question
Jeff Jordan	Randolph Resident	11/17/2021	Text message	Question about when SRP purchased the Coolidge Generating Station.

Name	Affiliation	Interaction Date	Interaction Type (email, telephone hotline, postal mail, briefing)	Summary of Public Comment/Question
Ryan Bentz	Member of the public	11/17/2021	Website Comment	Question about the turbines being installed for the project.
Ryan Bentz	Member of the public	11/17/2021	Website Comment	Additional turbine question.
Nathan Miller	Member of the public	11/22/2021	Website Comment	Contractor
Kyle Muldrow	Randolph Resident	11/24/2021	Email outgoing	Randolph partnership ideas
Anna Tovar	Commissioner	11/29/2021	Briefing	Project update
Neal Carter	AZ House of Representatives Legislative District 8	12/2/2021	Email outgoing	Open house invite
Jeff Jordan	Randolph Resident	12/6/2021	Meeting	Open house invite
Kyle Muldrow	Randolph Resident	12/6/2021	Phone call outgoing	Open house invite
Mary Turner	Randolph Resident	12/6/2021	Phone call outgoing	Open house invite

JOIN SRP FOR A COMMUNITY EVENT

SATURDAY, OCT. 16, 11 A.M.-1 P.M.

THE EVENT WILL BE HELD AT THE OLD LOCATION OF THE NEW LIFE CHRISTIAN CENTER
ON AZ-87 AND BATEMAN STREET: 4883 E. BATEMAN ST., COOLIDGE, AZ 85128.

Free lunch and beverages will be provided.

Kids will enjoy a fun activity.

Information about SRP's Coolidge Expansion
Project will be provided.

*To learn more about the Coolidge Expansion Project,
visit srpnet.com/CEP.*

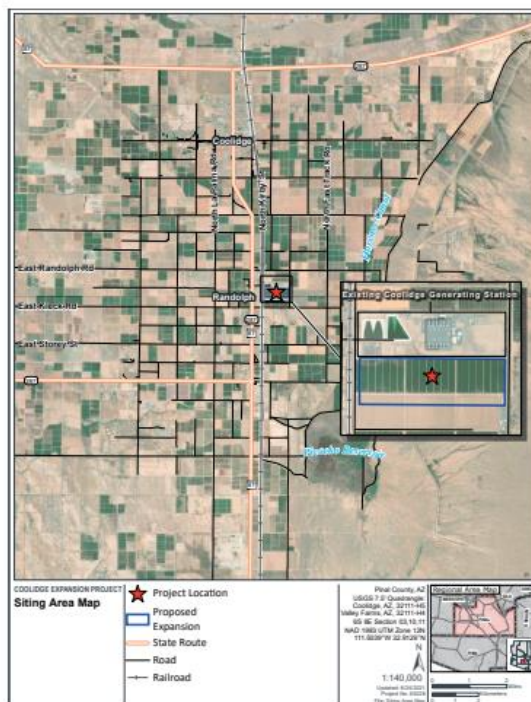


165811-004 09/21

Exhibit J-1a. October 16th community event invitation.

ANNOUNCING THE COOLIDGE EXPANSION PROJECT

SRP is applying for a Certificate of Environmental Compatibility (CEC) for the expansion of the Coolidge Generating Station, a natural gas power plant near Coolidge, Arizona. The Coolidge Expansion Project (CEP) will allow SRP to meet the significant and increasing near-term energy needs in its service territory, which is among the fastest growing regions in the nation. In addition, the CEP will allow SRP to add more renewable resources while maintaining the reliability of the power grid.



The CEP will be sited on approximately 100 acres adjacent to the existing Coolidge Generating Station, which is located southeast of the Arizona Boulevard and Randolph Road intersection. SRP will work with local stakeholders and surrounding communities to evaluate compatibility with existing power system infrastructure and land use.

To learn more about this project, visit srpnet.com/cep or call (888) 705-1509. Para obtener información en español sobre este proyecto, visite srpnet.com/CEPspanish.

SRP will be posting a virtual open house to the project webpage on Sept. 30, 2021. Once posted, the open house may be viewed on demand 24 hours a day at srpnet.com/cep.

SRP will also be hosting one or more in-person open houses (subject to CDC and local guidance) prior to filing the application for a CEC with the Arizona Corporation Commission. Dates and additional information for future open houses will be posted to the project website as they become available.

165811-002 08/21



PAB4TB
P.O. Box 52025
Phoenix, AZ 85072-2025

PRSRT STD
U.S. POSTAGE
PAID
PHOENIX, AZ
PERMIT NO. 395

Exhibit J-1b. Project notification 1.

ANNOUNCING THE COOLIDGE EXPANSION PROJECT

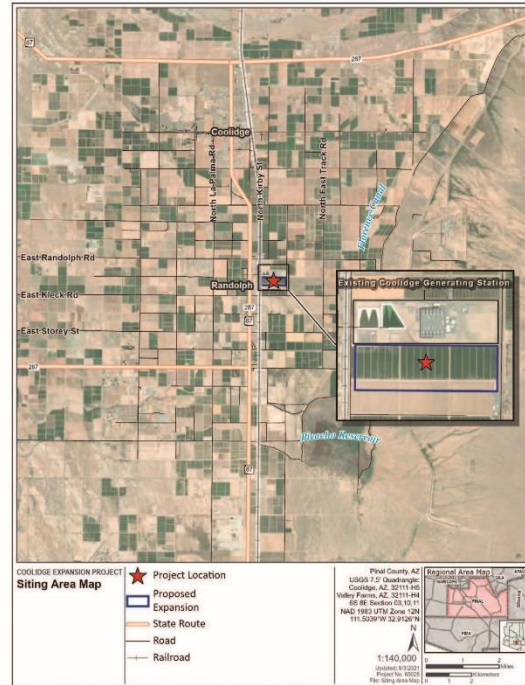
LIVE OPEN HOUSES*

SRP is applying for a Certificate of Environmental Compatibility (CEC) for the expansion of the Coolidge Generating Station, a natural gas power plant near Coolidge, Arizona. The Coolidge Expansion Project (CEP) will allow SRP to meet the significant and increasing near-term energy needs in its service territory, which is among the fastest growing regions in the nation. In addition, the CEP will allow SRP to add more renewable resources while maintaining the reliability of the power grid.

*Subject to change based on COVID-19 health and safety protocols.



Delivering water and power®



SRP has posted a virtual open house to the project webpage that can be viewed on demand 24 hours a day at srpnet.com/CEP.

In addition to the virtual open house, SRP has scheduled five opportunities to attend a live open house. The live open houses will provide project information and time to respond to questions.

LIVE ONLINE OPEN HOUSES

WEDNESDAY, OCT. 20, 2021, THURSDAY, OCT. 21, 2021,
 Noon-1 p.m. or 5:30-6:30 p.m. Noon-1 p.m. or 5:30-6:30 p.m.

All attendees need to pre-register for the LIVE ONLINE event. Please visit srpnet.com/CEP for details and instructions. You can also call (888) 705-1509.

LIVE IN-PERSON OPEN HOUSE

Wednesday, Nov. 3, 2021, 4-6 p.m.
 Pinal County Fairgrounds
 512 S. Eleven Mile Corner Road, Casa Grande, AZ 85194

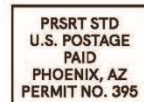
Masks are required, no pre-registration needed.

To learn more about this project, visit srpnet.com/CEP or call (888) 705-1509. Para obtener información en español sobre este proyecto, visite srpnet.com/CEPspanish.

165811-003 09/21



PAB4TB
 P.O. Box 52025
 Phoenix, AZ 85072-2025



ANNOUNCING THE COOLIDGE EXPANSION PROJECT

IN-PERSON OPEN HOUSE*

SRP is applying for a Certificate of Environmental Compatibility (CEC) for the expansion of the Coolidge Generating Station, a natural gas power plant near Coolidge, Arizona. The Coolidge Expansion Project (CEP) will allow SRP to meet the significant and increasing near-term energy needs in its service territory, which is among the fastest growing regions in the nation. In addition, the CEP will allow SRP to add more renewable resources while maintaining the reliability of the power grid.

*Subject to change based on COVID-19 health and safety protocols.



Delivering water and power®



SRP has posted a virtual open house to the project webpage that can be viewed on demand 24 hours a day at srpnet.com/CEP.

SRP has scheduled another opportunity to attend a live open house. The in-person open house will provide project information and time to respond to questions.

LIVE IN-PERSON OPEN HOUSE

Thursday, Dec. 9, 2021, 5-7 p.m.
Artisan Village
351 N. Arizona Blvd., Coolidge, AZ 85128

Masks are required, no pre-registration needed.

To learn more about this project, visit srpnet.com/CEP or call (888) 705-1509. Para obtener información en español sobre este proyecto, visite srpnet.com/CEPspanish.



PAB4TB
P.O. Box 52025
Phoenix, AZ 85072-2025

PRESORTED
FIRST-CLASS MAIL
U.S. POSTAGE PAID
PHOENIX, AZ
PERMIT NO. 395

Exhibit J-1d. Project notification 3.

SRP Delivering water and power®

My Account Pay Bill Outages

MY ACCOUNT RESIDENTIAL ELECTRIC BUSINESS ELECTRIC WATER SAVINGS AND REBATES ABOUT US CONTACT US

COOLIDGE EXPANSION PROJECT

See how new generation infrastructure will help meet growing power demand.

HOME PROJECT NEED AND BENEFIT PUBLIC PROCESS FAQ NEWS CONTACT SRP

ABOUT THE PROJECT

Salt River Project Agricultural Improvement and Power District (SRP), a community-based, not-for-profit utility based in Tempe, Arizona, is applying for a Certificate of Environmental Compatibility (CEC) for the expansion of the Coolidge Generating Station.

The Coolidge Generating Station is a natural gas power plant near Coolidge, Arizona, that was built between 2009 and 2011. SRP purchased the plant in 2019 to help support growing demand for power in the region.

The proposed Coolidge Expansion Project (CEP) will allow SRP to meet the significant near-term increase in energy needs in its service territory, which is among the fastest growing regions in the nation. In addition, the CEP will enable the addition of more renewable resources while maintaining a reliable power grid.

A [virtual open house](#) is available and can be viewed on-demand, 24 hours a day.

[Learn more about the project](#)

As part of the CEC process, SRP is seeking public input for the Coolidge expansion, which would include construction of up to 820 megawatts (MW) of new power generation produced by 16 gas turbines.

CONTACT US

If you have questions about the project, please [contact us](#) or call **(888) 705-1509**.

SELF SERVICE

- Get text alerts
- Request a street light repair
- Request payment extension
- Account information release form
- View lake levels
- How to read your meter

MORE ABOUT SRP

- Careers
- Newsroom
- SRP Blog
- Problem resolution
- Supplier information
- SRP facts

EN ESPAÑOL

- MiSRP.com
- AhorraConSRP.com
- SRPyAgua.com

CONTACT US


- Residential electric: (602) 236-8888
- Business electric: (602) 236-8833
- SRP irrigation: (602) 236-3333
- La Línea: (602) 236-1111
- Email us

BLOG

SRP Privacy Policy and SRP Website Terms & Conditions
1996- © SRP

BBB ACCREDITED BUSINESS ENERGY STAR PARTNER

Exhibit J-2a. Project website content.


My Account
Pay Bill
Outages

[MY ACCOUNT](#)
[RESIDENTIAL ELECTRIC](#)
[BUSINESS ELECTRIC](#)
[WATER](#)
[SAVINGS AND REBATES](#)
[ABOUT US](#)
[CONTACT US](#)

[Español](#)

COOLIDGE EXPANSION PROJECT

See how new generation infrastructure will help meet growing power demand.

[HOME](#)
[PROJECT NEED AND BENEFIT](#)
[PUBLIC PROCESS](#)
[FAQ](#)
[NEWS](#)
[CONTACT SRP](#)

WHY IS THIS PROJECT NEEDED?

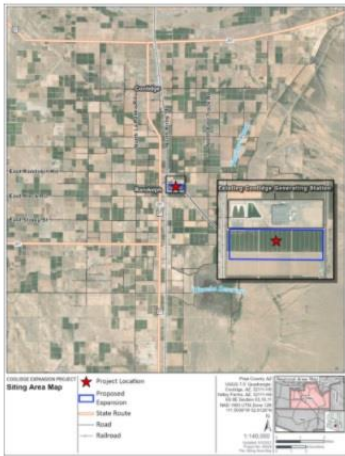
The proposed Coolidge Expansion Project (CEP) is needed to meet the significant near-term increase in energy needs in SRP's service territory, which is among the fastest growing regions in the nation. In addition, the CEP will enable the addition of more renewable resources while maintaining a reliable power grid. The CEP will ensure that SRP can meet these objectives while staying on the path to achieve our deep decarbonization goals over the long term.

WHAT BENEFIT DOES IT SERVE?

Benefits of CEP:

- Meeting Near-term Demand:** One of SRP's primary responsibilities to the communities we serve is to provide reliable electric service. The CEP will allow SRP to fulfill this obligation in the face of strong economic growth in SRP's service territory.
- Reliable Integration of Renewables:** SRP has committed to add 2,025 MW of solar energy to its renewable portfolio by 2025. Along with increased solar generation comes more variability in power output, especially during cloudy conditions. The CEP includes quick-starting (10 minutes) and fast-ramping power generation resources that can smooth out these fluctuations and ensure SRP delivers consistent, reliable power.
- Importance of Location:** The CEP location allows SRP to leverage the existing Coolidge Generating Station site and infrastructure while also ensuring a better balance of power generation located in the East Valley with power generation located in the West Valley. This will help to optimize the overall power transfer capability, reliability and flexibility of SRP's transmission system.

PROPOSED EXPANSION SITE



EXISTING COOLIDGE GENERATING STATION


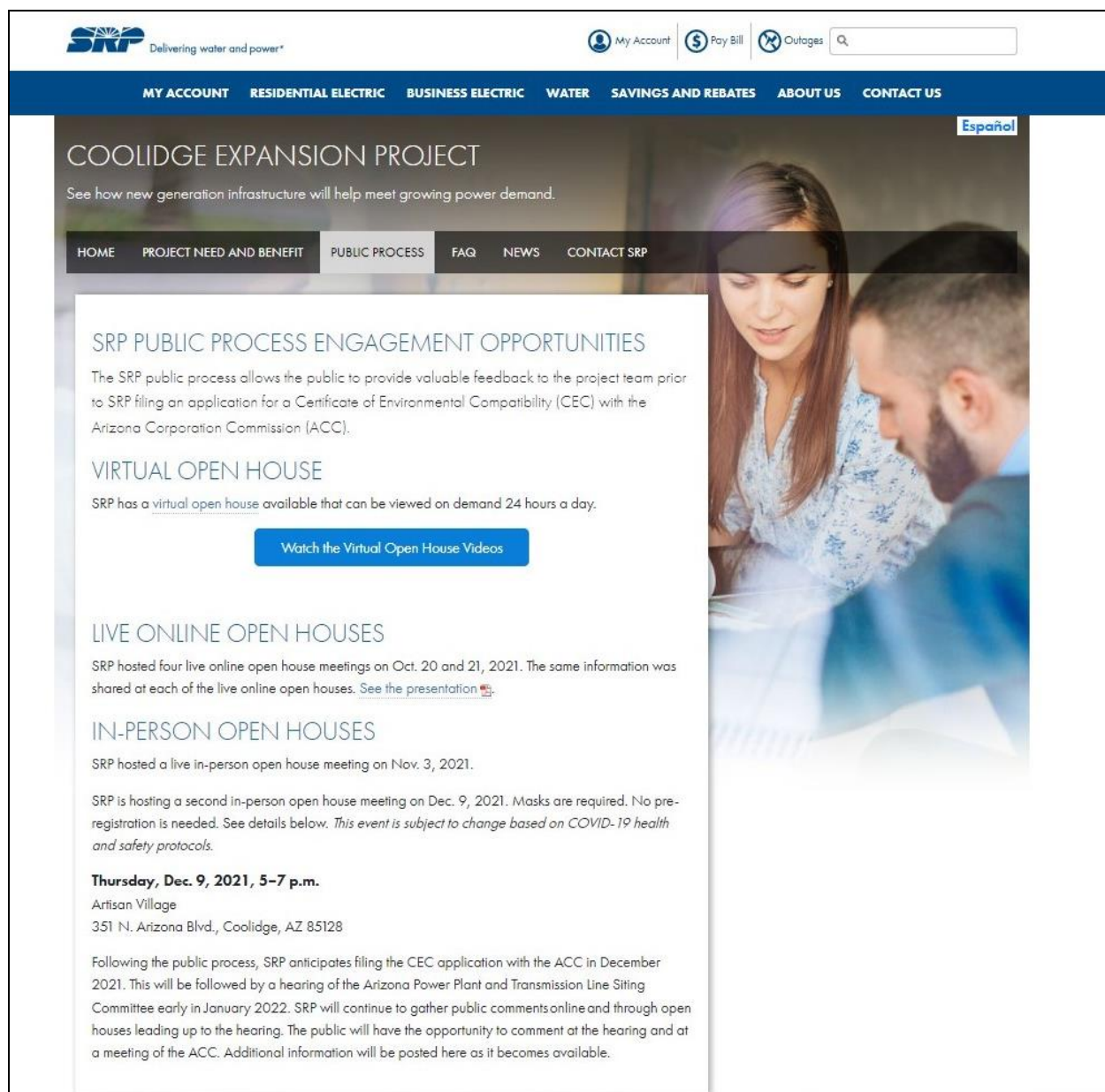


Exhibit J-2b. Project website content (continued).



SRP Delivering water and power*

My Account Pay Bill Outages

MY ACCOUNT RESIDENTIAL ELECTRIC BUSINESS ELECTRIC WATER SAVINGS AND REBATES ABOUT US CONTACT US

COOLIDGE EXPANSION PROJECT

See how new generation infrastructure will help meet growing power demand.

HOME PROJECT NEED AND BENEFIT PUBLIC PROCESS FAQ NEWS CONTACT SRP

SRP PUBLIC PROCESS ENGAGEMENT OPPORTUNITIES

The SRP public process allows the public to provide valuable feedback to the project team prior to SRP filing an application for a Certificate of Environmental Compatibility (CEC) with the Arizona Corporation Commission (ACC).

VIRTUAL OPEN HOUSE

SRP has a virtual open house available that can be viewed on demand 24 hours a day.

[Watch the Virtual Open House Videos](#)

LIVE ONLINE OPEN HOUSES

SRP hosted four live online open house meetings on Oct. 20 and 21, 2021. The same information was shared at each of the live online open houses. [See the presentation](#).

IN-PERSON OPEN HOUSES

SRP hosted a live in-person open house meeting on Nov. 3, 2021.

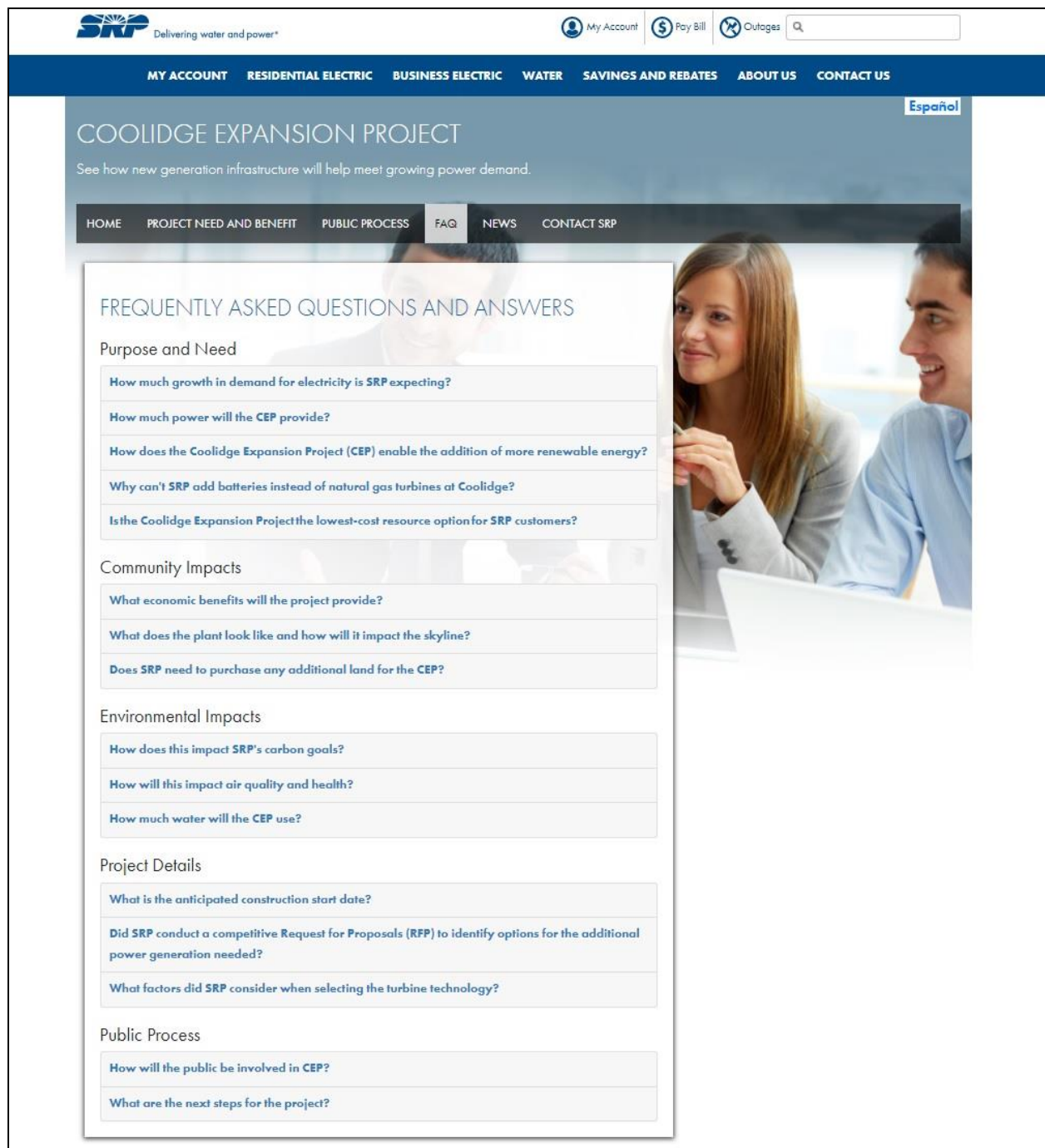
SRP is hosting a second in-person open house meeting on Dec. 9, 2021. Masks are required. No pre-registration is needed. See details below. *This event is subject to change based on COVID-19 health and safety protocols.*

Thursday, Dec. 9, 2021, 5-7 p.m.

Arisan Village
351 N. Arizona Blvd., Coolidge, AZ 85128

Following the public process, SRP anticipates filing the CEC application with the ACC in December 2021. This will be followed by a hearing of the Arizona Power Plant and Transmission Line Siting Committee early in January 2022. SRP will continue to gather public comments online and through open houses leading up to the hearing. The public will have the opportunity to comment at the hearing and at a meeting of the ACC. Additional information will be posted here as it becomes available.

Exhibit J-2c. Project website content (continued).



SRP Delivering water and power*

My Account Pay Bill Outages

MY ACCOUNT RESIDENTIAL ELECTRIC BUSINESS ELECTRIC WATER SAVINGS AND REBATES ABOUT US CONTACT US

COOLIDGE EXPANSION PROJECT

See how new generation infrastructure will help meet growing power demand.

HOME PROJECT NEED AND BENEFIT PUBLIC PROCESS **FAQ** NEWS CONTACT SRP

FREQUENTLY ASKED QUESTIONS AND ANSWERS

Purpose and Need

- How much growth in demand for electricity is SRP expecting?
- How much power will the CEP provide?
- How does the Coolidge Expansion Project (CEP) enable the addition of more renewable energy?
- Why can't SRP add batteries instead of natural gas turbines at Coolidge?
- Is the Coolidge Expansion Project the lowest-cost resource option for SRP customers?

Community Impacts

- What economic benefits will the project provide?
- What does the plant look like and how will it impact the skyline?
- Does SRP need to purchase any additional land for the CEP?

Environmental Impacts

- How does this impact SRP's carbon goals?
- How will this impact air quality and health?
- How much water will the CEP use?

Project Details

- What is the anticipated construction start date?
- Did SRP conduct a competitive Request for Proposals (RFP) to identify options for the additional power generation needed?
- What factors did SRP consider when selecting the turbine technology?

Public Process

- How will the public be involved in CEP?
- What are the next steps for the project?

Español

Exhibit J-2d. Project website content (continued).

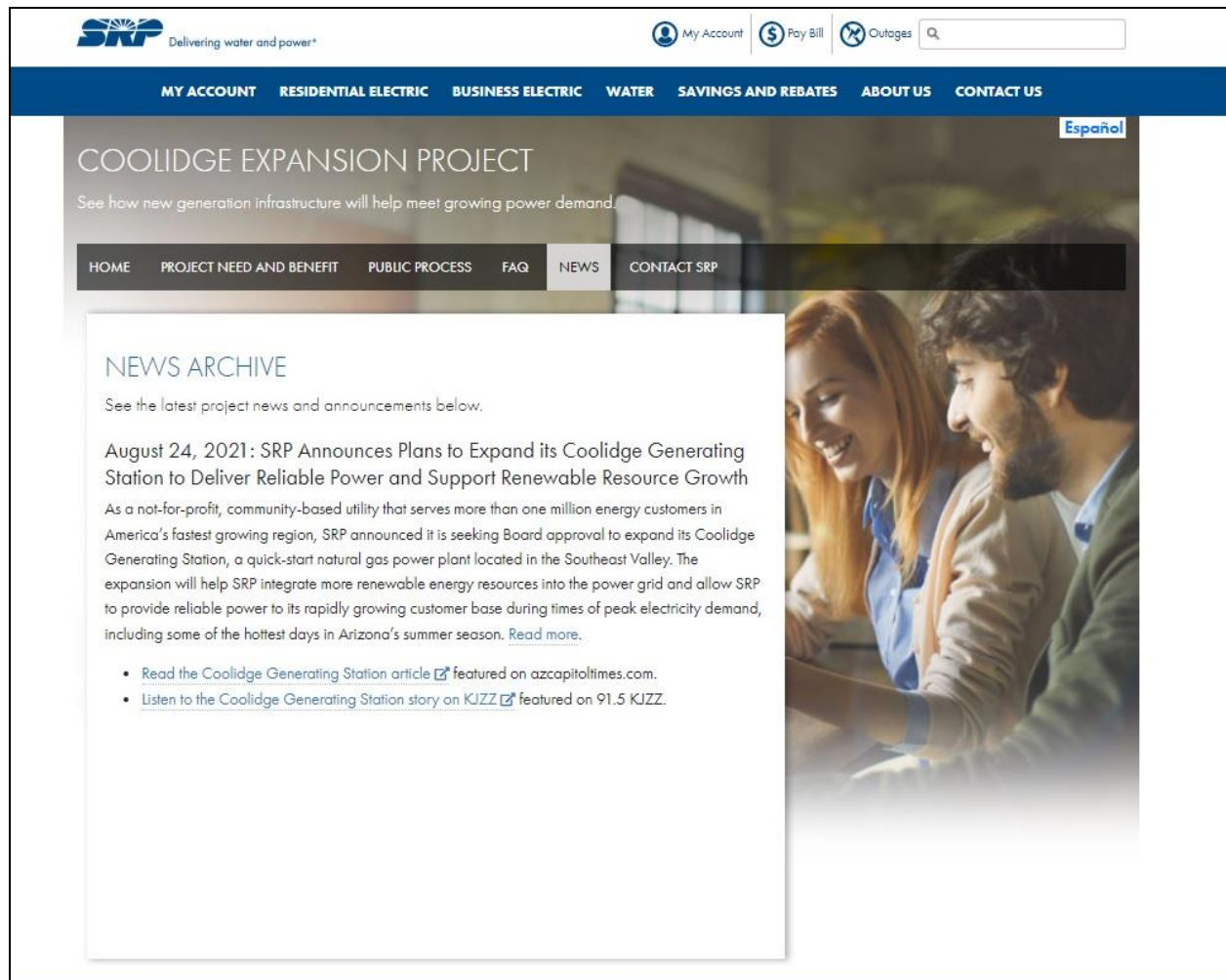
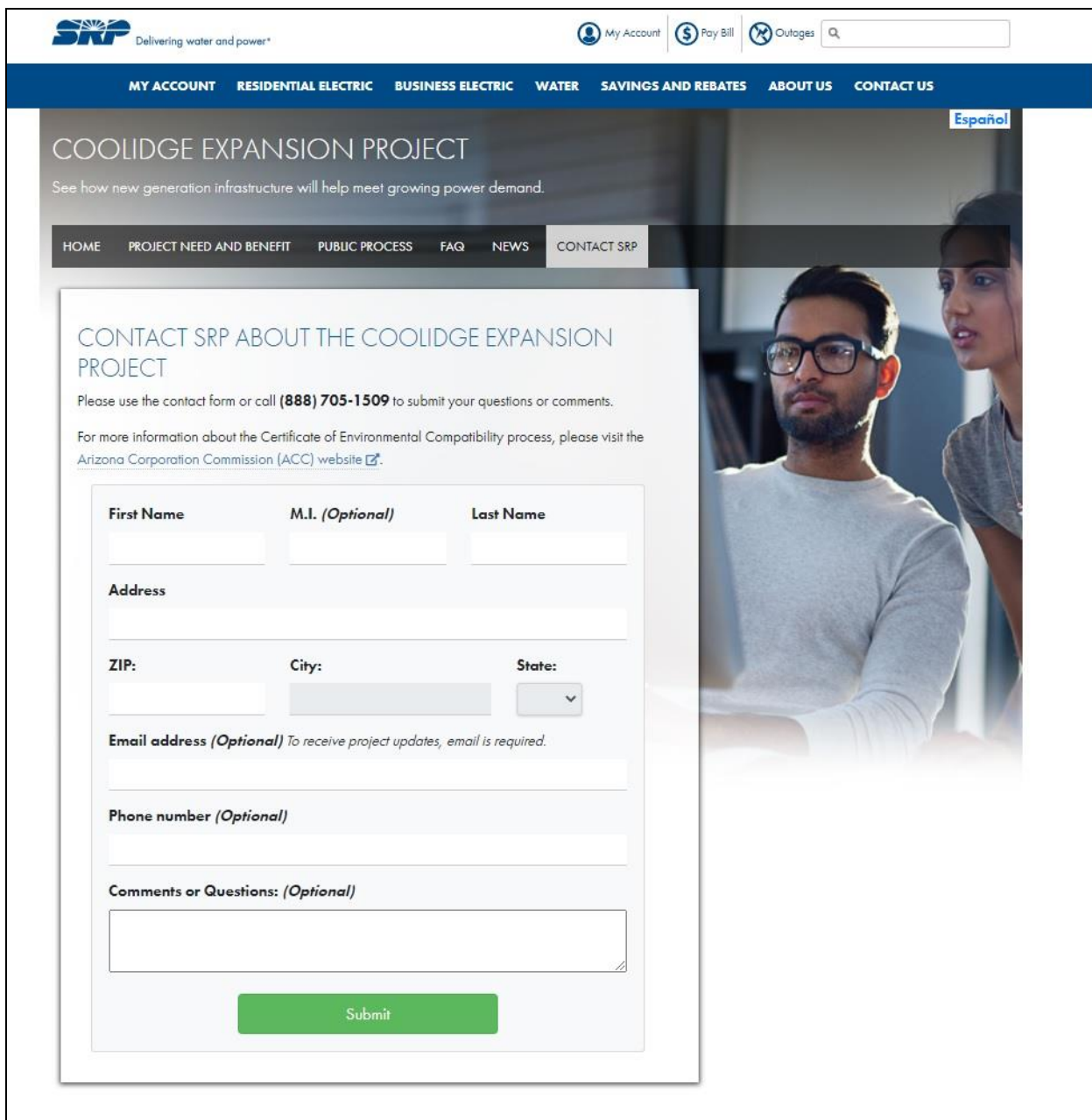


Exhibit J-2e. Project website content (continued).



The screenshot displays the SRP (Salt River Project) website. At the top, the SRP logo is on the left, and navigation links for 'My Account', 'Pay Bill', and 'Outages' are on the right. A blue navigation bar contains links for 'MY ACCOUNT', 'RESIDENTIAL ELECTRIC', 'BUSINESS ELECTRIC', 'WATER', 'SAVINGS AND REBATES', 'ABOUT US', and 'CONTACT US'. A 'Español' link is also present. The main heading is 'COOLIDGE EXPANSION PROJECT' with the subtext 'See how new generation infrastructure will help meet growing power demand.' Below this is a secondary navigation bar with links: 'HOME', 'PROJECT NEED AND BENEFIT', 'PUBLIC PROCESS', 'FAQ', 'NEWS', and 'CONTACT SRP'. The 'CONTACT SRP ABOUT THE COOLIDGE EXPANSION PROJECT' section includes instructions to use the contact form or call (888) 705-1509. It also provides a link to the Arizona Corporation Commission (ACC) website for more information on the Certificate of Environmental Compatibility process. The contact form itself has fields for 'First Name', 'M.I. (Optional)', 'Last Name', 'Address', 'ZIP:', 'City:', 'State:' (a dropdown menu), 'Email address (Optional)' (with a note that email is required for updates), 'Phone number (Optional)', and 'Comments or Questions: (Optional)'. A green 'Submit' button is at the bottom of the form. The background of the page features a blurred image of a man and a woman looking at a screen.

SRP Delivering water and power®

My Account Pay Bill Outages

MY ACCOUNT RESIDENTIAL ELECTRIC BUSINESS ELECTRIC WATER SAVINGS AND REBATES ABOUT US CONTACT US

COOLIDGE EXPANSION PROJECT

See how new generation infrastructure will help meet growing power demand.

HOME PROJECT NEED AND BENEFIT PUBLIC PROCESS FAQ NEWS CONTACT SRP

CONTACT SRP ABOUT THE COOLIDGE EXPANSION PROJECT

Please use the contact form or call **(888) 705-1509** to submit your questions or comments.

For more information about the Certificate of Environmental Compatibility process, please visit the Arizona Corporation Commission (ACC) website [\[link\]](#).

First Name **M.I. (Optional)** **Last Name**

Address

ZIP: **City:** **State:**

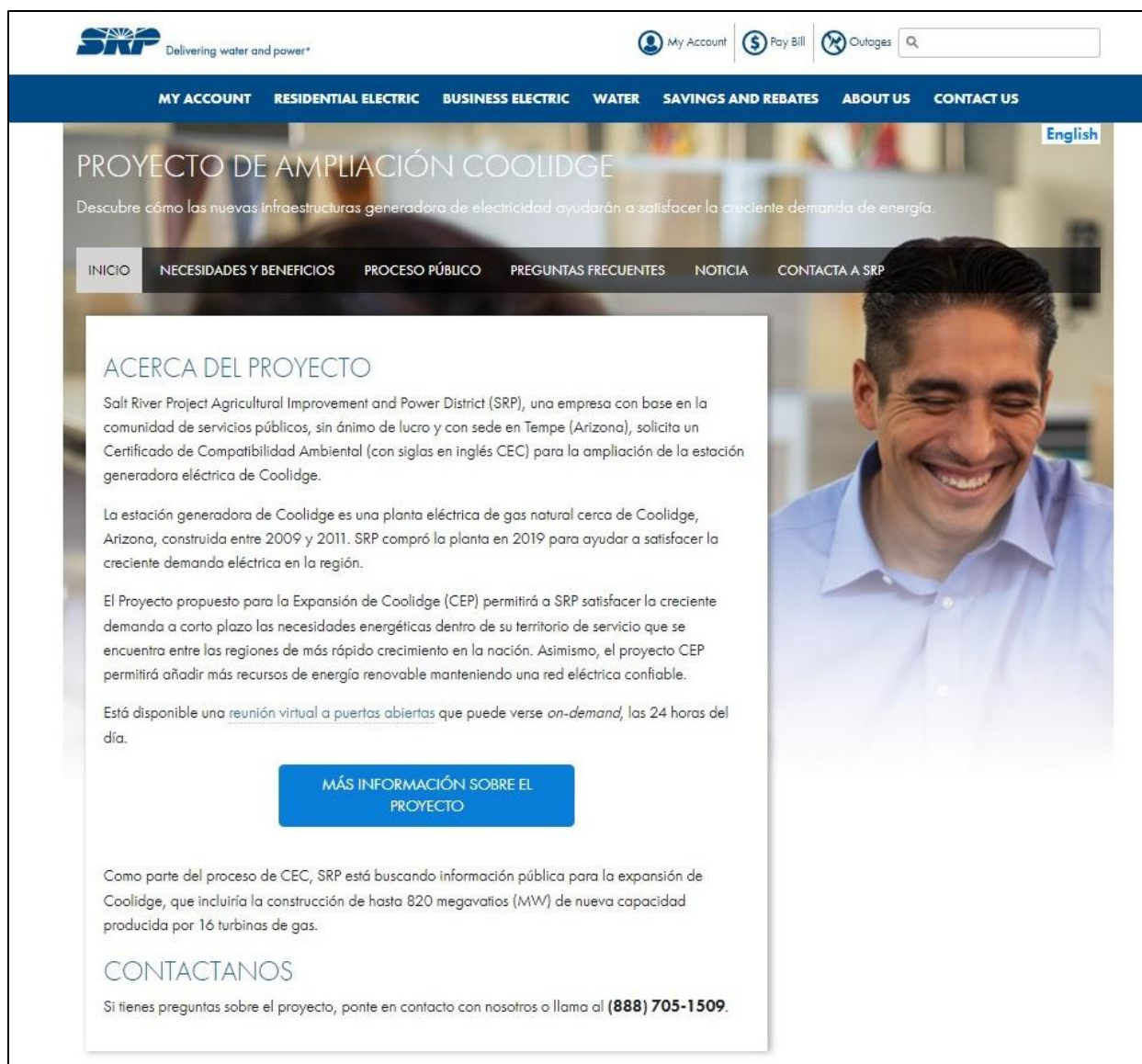
Email address (Optional) To receive project updates, email is required.

Phone number (Optional)

Comments or Questions: (Optional)

Submit

Exhibit J-2f. Project website content (continued).



SRP Delivering water and power*

My Account Pay Bill Outages

MY ACCOUNT RESIDENTIAL ELECTRIC BUSINESS ELECTRIC WATER SAVINGS AND REBATES ABOUT US CONTACT US

English

PROYECTO DE AMPLIACIÓN COOLIDGE

Descubre cómo las nuevas infraestructuras generadora de electricidad ayudarán a satisfacer la creciente demanda de energía.

INICIO NECESIDADES Y BENEFICIOS PROCESO PÚBLICO PREGUNTAS FRECUENTES NOTICIA CONTACTA A SRP

ACERCA DEL PROYECTO

Salt River Project Agricultural Improvement and Power District (SRP), una empresa con base en la comunidad de servicios públicos, sin ánimo de lucro y con sede en Tempe (Arizona), solicita un Certificado de Compatibilidad Ambiental (con siglas en inglés CEC) para la ampliación de la estación generadora eléctrica de Coolidge.

La estación generadora de Coolidge es una planta eléctrica de gas natural cerca de Coolidge, Arizona, construida entre 2009 y 2011. SRP compró la planta en 2019 para ayudar a satisfacer la creciente demanda eléctrica en la región.

El Proyecto propuesto para la Expansión de Coolidge (CEP) permitirá a SRP satisfacer la creciente demanda a corto plazo las necesidades energéticas dentro de su territorio de servicio que se encuentra entre las regiones de más rápido crecimiento en la nación. Asimismo, el proyecto CEP permitirá añadir más recursos de energía renovable manteniendo una red eléctrica confiable.

Está disponible una [reunión virtual a puertas abiertas](#) que puede verse *on-demand*, las 24 horas del día.

MÁS INFORMACIÓN SOBRE EL PROYECTO

Como parte del proceso de CEC, SRP está buscando información pública para la expansión de Coolidge, que incluiría la construcción de hasta 820 megavatios (MW) de nueva capacidad producida por 16 turbinas de gas.

CONTACTANOS

Si tienes preguntas sobre el proyecto, ponte en contacto con nosotros o llama al **(888) 705-1509**.

Exhibit J-2g. Project website Spanish content example.

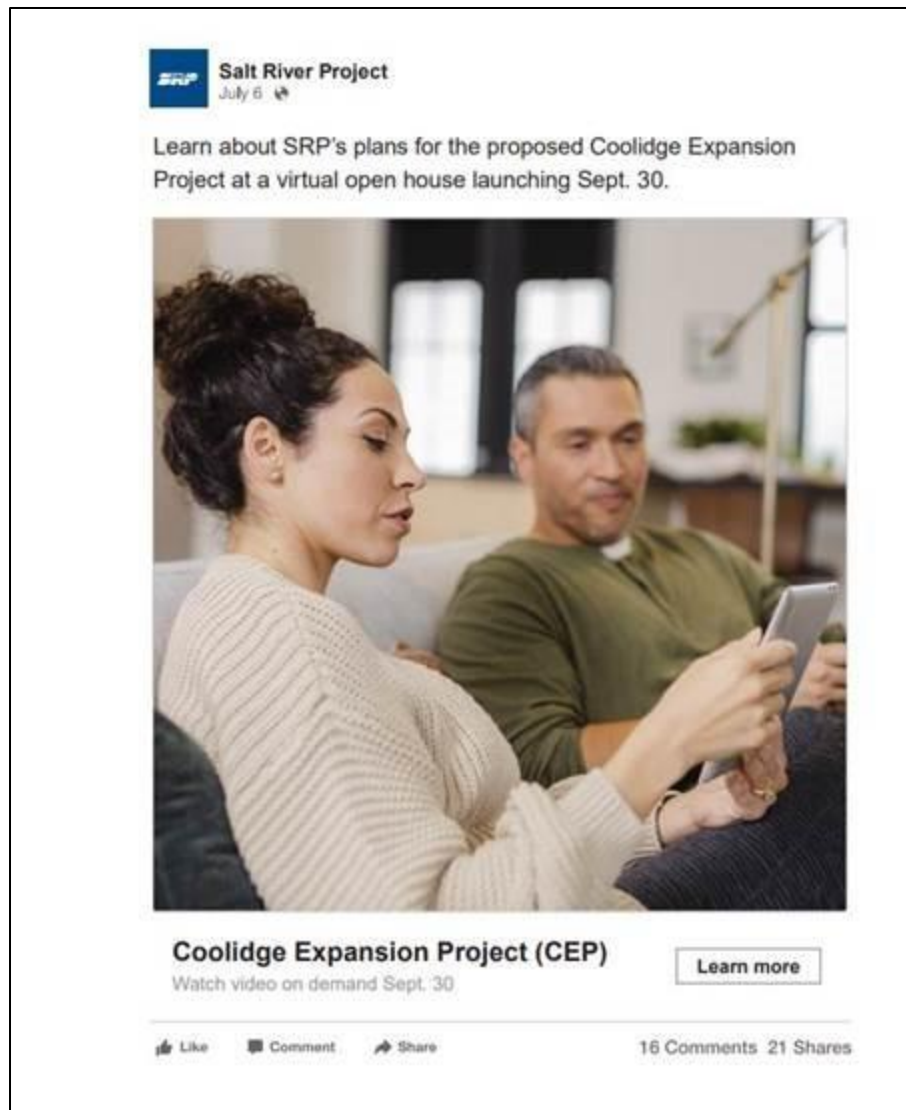


Exhibit J-3a. Facebook advertisements for the virtual open house.




Exhibit J-3b. Social media advertisements for the live online open house events.

Nextdoor (English Only; Nextdoor does not support Spanish at this time)

Salt River Project
July 6 · 🌐

Coolidge Expansion Project In-Person Open House on Nov. 3
Learn about SRP's plans for the proposed Coolidge Expansion Project at an in-person open house on Wednesday, Nov. 3, from 4–6 p.m. at the Pinal County Fairgrounds, located at 512 S. Eleven Mile Corner Road, Casa Grande, AZ 85194. The open house will provide project information and an opportunity to ask questions. No preregistration is needed; however, masks are required. Event details are subject to change based on COVID-19 health and safety protocols.



Learn more at srpnet.com/CEP. [Register](#)

EXPANDED

Salt River Project
July 6 · 🌐

Coolidge Expansion Project In-Person Open House on Nov. 3
Learn about SRP's plans for the proposed Coolidge Expansion Project at an in-person open house on... [more](#)



Learn more at srpnet.com/CEP. [Register](#)

COMPACT

Facebook/Instagram English & Spanish

Salt River Project
July 6 · 🌐

Learn about SRP's plans for the proposed Coolidge Expansion Project at the Pinal County Fairgrounds on Nov. 3 from 4–6 p.m.



Coolidge Expansion Project (CEP)
11/3 Open House

[Learn More](#)

Like · Comment · Share 16 Comments · 21 Shares

Salt River Project
July 6 · 🌐

Learn about SRP's plans for the proposed Coolidge Expansion Project at the Pinal County Fairgrounds on Nov. 3 from 4–6 p.m.



Coolidge Expansion Project (CEP)
11/3 Open House

[Learn More](#)

Like · Comment · Share 16 Comments · 21 Shares

Salt River Project
July 6 · 🌐

Conoce el Proyecto de Expansión de SRP en Coolidge en Pinal County Fairgrounds el 3 de Nov. 4–6 p.m.



Proyecto de Expansión Coolidge (CEP)
Abierto al Público 11/3 (11/3)

[Conoce Más](#)

Like · Comment · Share 16 Comments · 21 Shares

Salt River Project
July 6 · 🌐

Conoce el Proyecto de Expansión de SRP en Coolidge en Pinal County Fairgrounds el 3 de Nov. 4–6 p.m.



Proyecto de Expansión Coolidge (CEP)
Abierto al Público 11/3 (11/3)

[Conoce Más](#)

Like · Comment · Share 16 Comments · 21 Shares

Exhibit J-3c. Social media advertisements for the in-person open house.

LIVE IN-PERSON OPEN HOUSE

Join us on Wednesday, Nov. 3, 2021, 4-6 p.m.*

Pinal County Fairgrounds

512 S. Eleven Mile Corner Road, Casa Grande, AZ 85194

Masks are required, no pre-registration needed.

ANNOUNCING THE COOLIDGE EXPANSION PROJECT

SRP is applying for a Certificate of Environmental Compatibility (CEC) for the expansion of the Coolidge Generating Station, a natural gas power plant near Coolidge, Arizona. The Coolidge Expansion Project (CEP) will allow SRP to meet the significant and increasing near-term energy needs in its service territory, which is among the fastest growing regions in the nation. In addition, the CEP will allow SRP to add more renewable resources while maintaining the reliability of the power grid.

To learn more about this project, visit srpnet.com/CEP or call (888) 705-1509. Para obtener información en español sobre este proyecto, visite srpnet.com/CEPspanish.

*Subject to change based on COVID-19 health and safety protocols.



Delivering water and power®



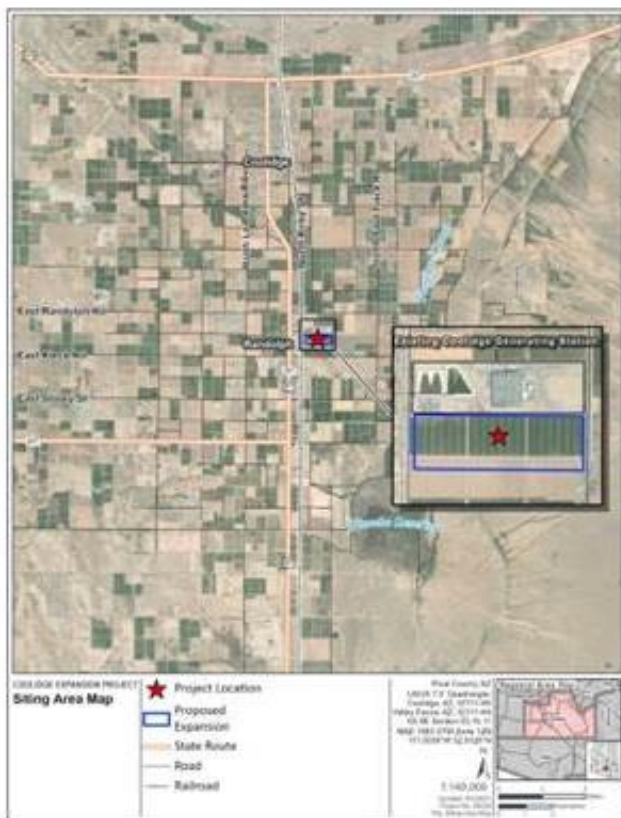
Exhibit J-4. Newspaper advertisements for the in-person open house.

LEARN ABOUT THE COOLIDGE EXPANSION PROJECT

WHY IS THIS PROJECT NEEDED?

The proposed Coolidge Expansion Project (CEP) is needed to meet the significant near-term increase in energy needs in SRP's service territory, which is among the fastest growing regions in the nation. In addition, the CEP will enable the addition of more renewable resources (such as solar and battery storage) while maintaining a reliable power grid. The CEP will ensure that SRP can meet these objectives while staying on the path to achieve our deep decarbonization goals over the long term.

PROPOSED EXPANSION SITE



WHAT BENEFIT DOES IT SERVE?

- **Meeting Near-term Demand:** One of SRP's primary responsibilities to the communities we serve is to provide reliable electric service. The CEP will allow SRP to fulfill this obligation in the face of strong economic growth in SRP's service territory.
- **Reliable Integration of Renewables:** SRP has committed to add 2,025 MW of solar energy to its renewable portfolio by 2026. Along with increased solar generation comes more variability in power output, especially during cloudy conditions. The CEP includes quick-starting (10 minutes) and fast-ramping power generation resources that can smooth out these fluctuations and ensure SRP delivers consistent, reliable power.
- **Importance of Location:** The CEP location allows SRP to leverage the existing Coolidge Generating Station site and infrastructure while also ensuring a better balance of power generation located in the East Valley with power generation located in the West Valley. This will help to optimize the overall power transfer capability, reliability and flexibility of SRP's transmission system.

OPEN HOUSE SCHEDULE

Live online

Wednesday, Oct. 20, 2021

Noon-1 p.m. or 5:30-6:30 p.m.

Register at srpnet.com/CEP or (888) 705-1509

Thursday, Oct. 21, 2021

Noon-1 p.m. or 5:30-6:30 p.m.

Register at srpnet.com/CEP or (888) 705-1509

In person

Wednesday, Nov. 3, 2021

4-6 p.m.

Pinal County Fairgrounds

No registration needed

EXISTING COOLIDGE GENERATING STATION



Exhibit J-5. Randolph community event handout.

Coolidge Expansion Project

Live Online Open House
October 2021

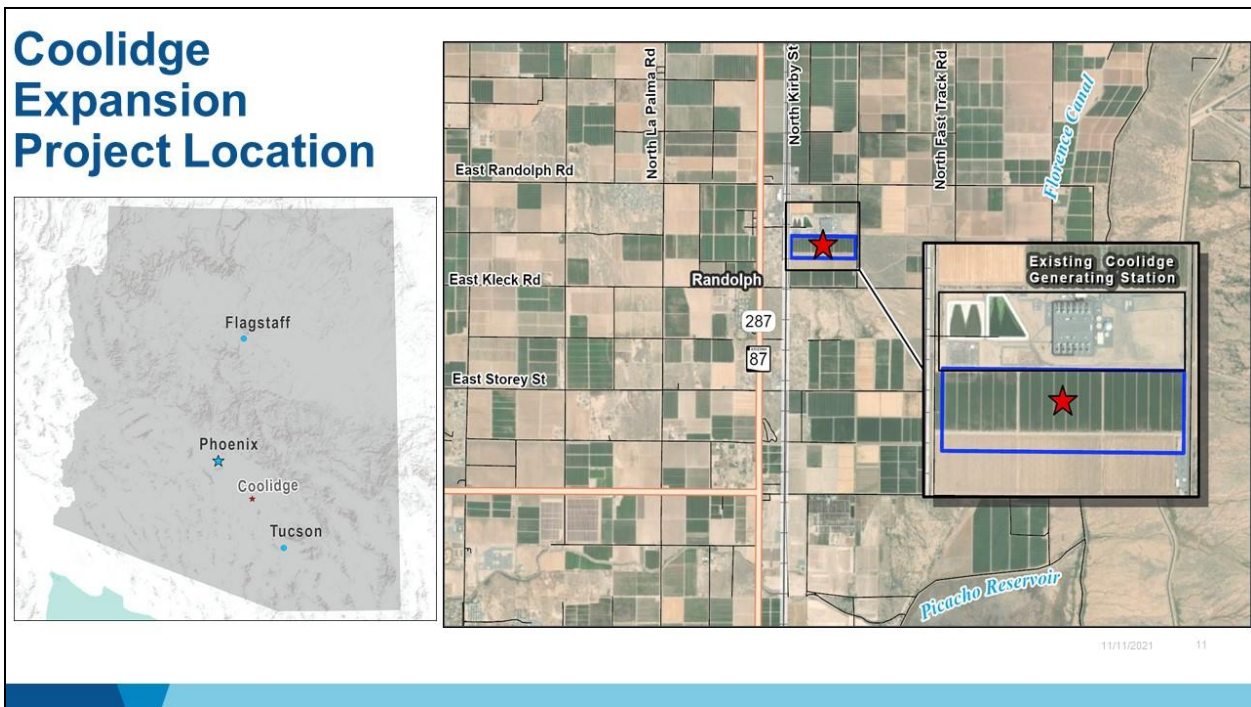


Delivering water
and power®

SRP serves our customers and communities by providing sustainable, reliable and affordable water and energy.

11/11/2021 10

Exhibit J-6. Live online open house presentation.



Strong Economic Growth Ahead

- **Arizona has the #1 fastest growing county in the U.S.**
- The **Southwest** is becoming America's advanced manufacturing hub
- **Housing permits are at the highest since mid-2000's:** Over 100 every day

11/11/2021 12

Exhibit J-6. Live online open house presentation (continued).

Coolidge Expansion Project



Reliability

- Serves near-term growth
- Quick start, fast ramping
- Mature technology



Sustainability

- Low utilization
- Enables more renewables
- Hydrogen capable
- Low water use



Affordability

- Best value for SRP customers

11/11/2021

13

Coolidge Generating Station

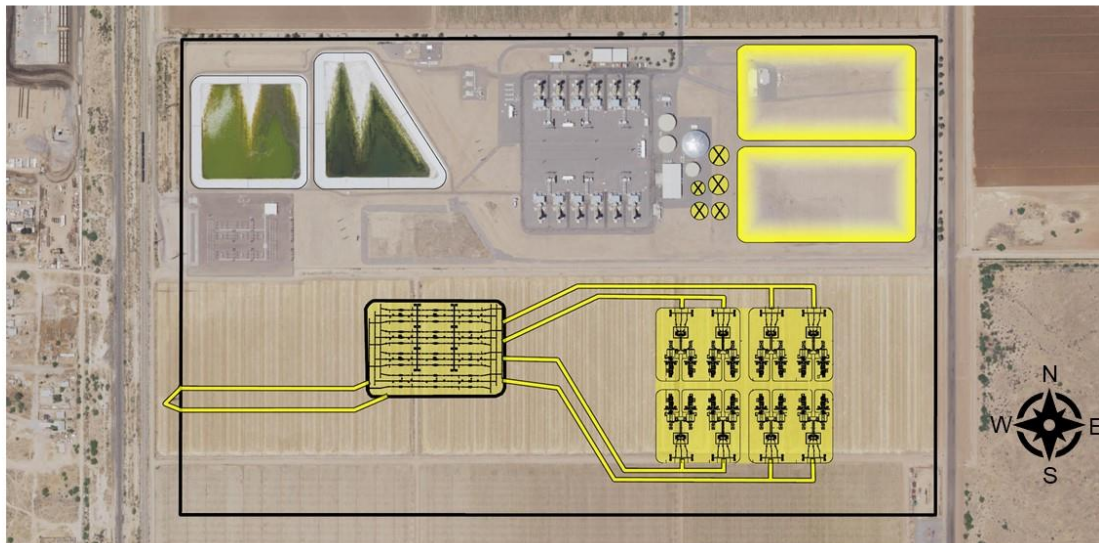


11/11/2021

14

Exhibit J-6. Live online open house presentation (continued).

Coolidge Expansion Project



Simulation

Key Observation Point 1

- Randolph Road and 5th Avenue
- Looking southeast at the Project



Existing Condition

KOP 1: View from Randolph Road and 5th Avenue looking southeast



Simulated Condition

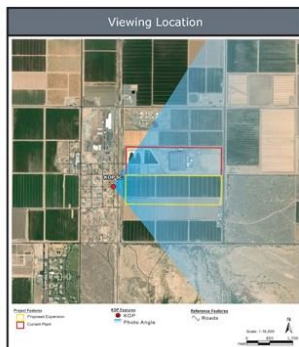
KOP 1: View from Randolph Road and 5th Avenue looking southeast

Exhibit J-6. Live online open house presentation (continued).

Simulation

Key Observation Point 5C

- East Malcom X Street and North Hughes Street
- Looking east at the Project



Existing Condition

KOP 5C: View from residence at East Malcom X Street and North Hughes Street looking east



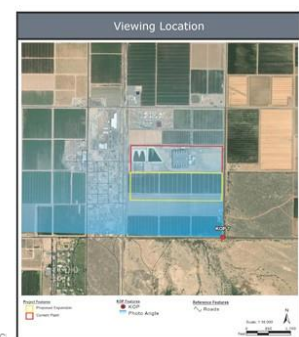
Simulated Condition

KOP 5C: View from residence at East Malcom X Street and North Hughes Street looking east

Simulation

Key Observation Point 7

- North Vail Road and East Kleck Road
- Looking northwest at the Project



Existing Condition

KOP 7: View from North Vail Road and East Kleck Road looking northwest



Simulated Condition

KOP 7: View from North Vail Road and East Kleck Road looking northwest

Exhibit J-6. Live online open house presentation (continued).

Environmental Analysis

Environmental Review and Analysis

- Air Quality
- Biological Resources
- Cultural and Historical Resources
- Water and Hydrology
- Land Use
- Noise
- Visual and Aesthetics

11/11/2021 20

Exhibit J-6. Live online open house presentation (continued).

Arizona Corporation Commission (ACC) Certificate of Environmental Compatibility (CEC) Process



11/11/2021

21

Environmental Review and Analysis



11/11/2021

22

Exhibit J-6. Live online open house presentation (continued).

Public Involvement

Opportunities for Public Involvement



11/11/2021

24

Exhibit J-6. Live online open house presentation (continued).

Learn More

srpnet.com/cep | (888) 705-1509
azcc.gov/arizona-power-plant/line-siting-committee



11/11/2021 25

thank you!

Exhibit J-6. Live online open house presentation (continued).

Welcome! Coolidge Expansion Project

Pinal County Fairgrounds, Coolidge, AZ

November 2021



Delivering water
and power®

SRP serves our customers and communities by providing sustainable, reliable and affordable water and energy.

Exhibit J-7a. In-person open house posters.

Station 1

Project Description

Existing Coolidge Generating Station

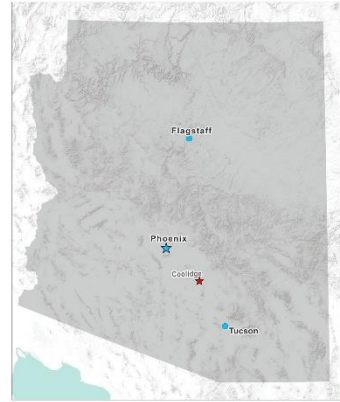
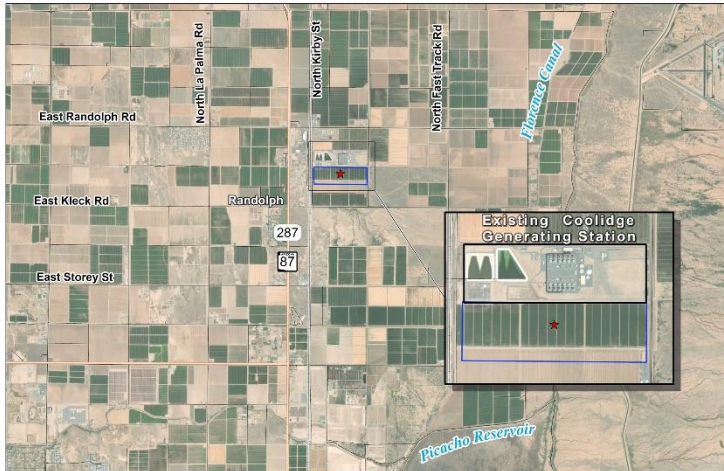


Built: 2009–2011

Purchased by SRP: 2019

Exhibit J-7a. In-person open house posters (continued).

Coolidge Expansion Project Location



- Coolidge Generating Station is an existing natural gas power plant located 5 miles south of the center of Coolidge.
- The location of the proposed Coolidge Expansion Project (□/★) was included in SRP's 2019 purchase.

Station 2 Project Need & Benefit

Exhibit J-7a. In-person open house posters (continued).

Coolidge Expansion Project



Reliability

- Serves near-term growth
- Quick starting, fast ramping
- Mature technology



Sustainability

- Low utilization
- Enables more renewables
- Hydrogen-capable
- Low water use



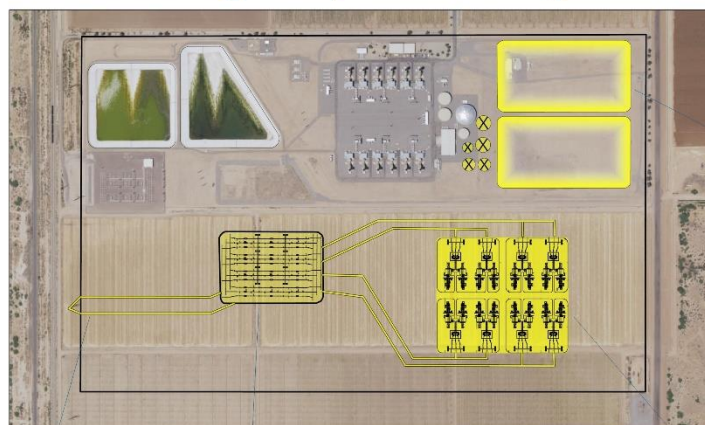
Affordability

- Best value for SRP customers

Strong Economic Growth Ahead

- **Arizona has the #1 fastest growing county in the U.S.**
- The **Southwest** is becoming America's advanced manufacturing hub
- **Housing permits at their highest since the mid-2000s:** over 100 every day

Coolidge Expansion Project



New
evaporation
ponds

New
transmission
interconnection

New 500 kV
switchyard

16 new gas turbines

Exhibit J-7a. In-person open house posters (continued).

Station 3

Project Simulations

Key Observation Point 1

Key Observation Point 1

- Randolph Road and 5th Avenue
- Looking southeast at the Project

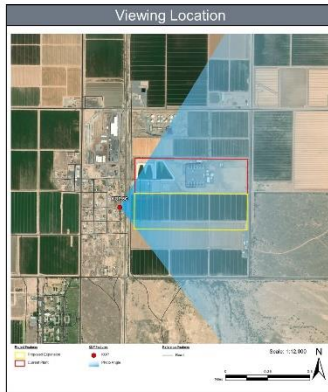


Exhibit J-7a. In-person open house posters (continued).

Key Observation Point 5C

Key Observation Point 5C

- East Malcolm X Street and North Hughes Street
- Looking east at the Project



Existing Condition KOP 5C: View from East Malcolm X Street and North Hughes Street looking east

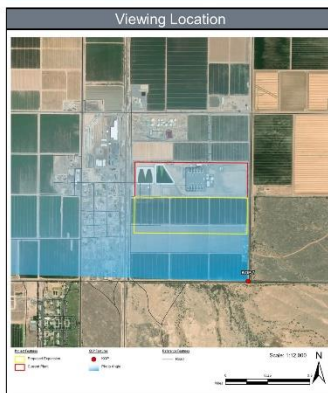


Simulated Condition KOP 5C: View from East Malcolm X Street and North Hughes Street looking east

Key Observation Point 7

Key Observation Point 7

- North Vail Road and East Kleck Road
- Looking northwest at the Project



Existing Condition KOP 7: View from North Vail Road and East Kleck Road looking northwest



Simulated Condition KOP 7: View from North Vail Road and East Kleck Road looking northwest

Exhibit J-7a. In-person open house posters (continued).

Station 4

CEC Process

Arizona Corporation Commission (ACC) Certificate of Environmental Compatibility (CEC) Process



Exhibit J-7a. In-person open house posters (continued).

Environmental Review and Analysis

- Air Quality
- Biological Resources
- Cultural and Historical Resources
- Water and Hydrology
- Land Use
- Noise
- Visual and Aesthetics

Cooperating agencies include:



Station 5 Public Comment

Exhibit J-7a. In-person open house posters (continued).

Opportunities for Public Involvement



Learn More & Comment

srpnet.com/CEP | (888) 705-1509
azcc.gov/arizona-power-plant/line-siting-committee



11/11/2021 18

Exhibit J-7a. In-person open house posters

LEARN ABOUT THE COOLIDGE EXPANSION PROJECT

WHY IS THIS PROJECT NEEDED?

The proposed Coolidge Expansion Project (CEP) is needed to meet the significant near-term increase in energy needs in SRP's service territory, which is among the fastest growing regions in the nation. In addition, the CEP will enable the addition of more renewable resources (such as solar and battery storage) while maintaining a reliable power grid. The CEP will ensure that SRP can meet these objectives while staying on the path to achieve our deep decarbonization goals over the long term.

PROPOSED EXPANSION SITE



WHAT BENEFIT DOES IT SERVE?

- **Meeting Near-term Demand:** One of SRP's primary responsibilities to the communities we serve is to provide reliable electric service. The CEP will allow SRP to fulfill this obligation in the face of strong economic growth in SRP's service territory.
- **Reliable Integration of Renewables:** SRP has committed to add 2,025 MW of solar energy to its renewable portfolio by 2025. Along with increased solar generation comes more variability in power output, especially during cloudy conditions. The CEP includes quick-starting (10 minutes) and fast-ramping power generation resources that can smooth out these fluctuations and ensure SRP delivers consistent, reliable power.
- **Importance of Location:** The CEP location allows SRP to leverage the existing Coolidge Generating Station site and infrastructure while also ensuring a better balance of power generation located in the East Valley with power generation located in the West Valley. This will help to optimize the overall power transfer capability, reliability and flexibility of SRP's transmission system.



Exhibit J-7b. In-person open house handout

This page intentionally left blank.