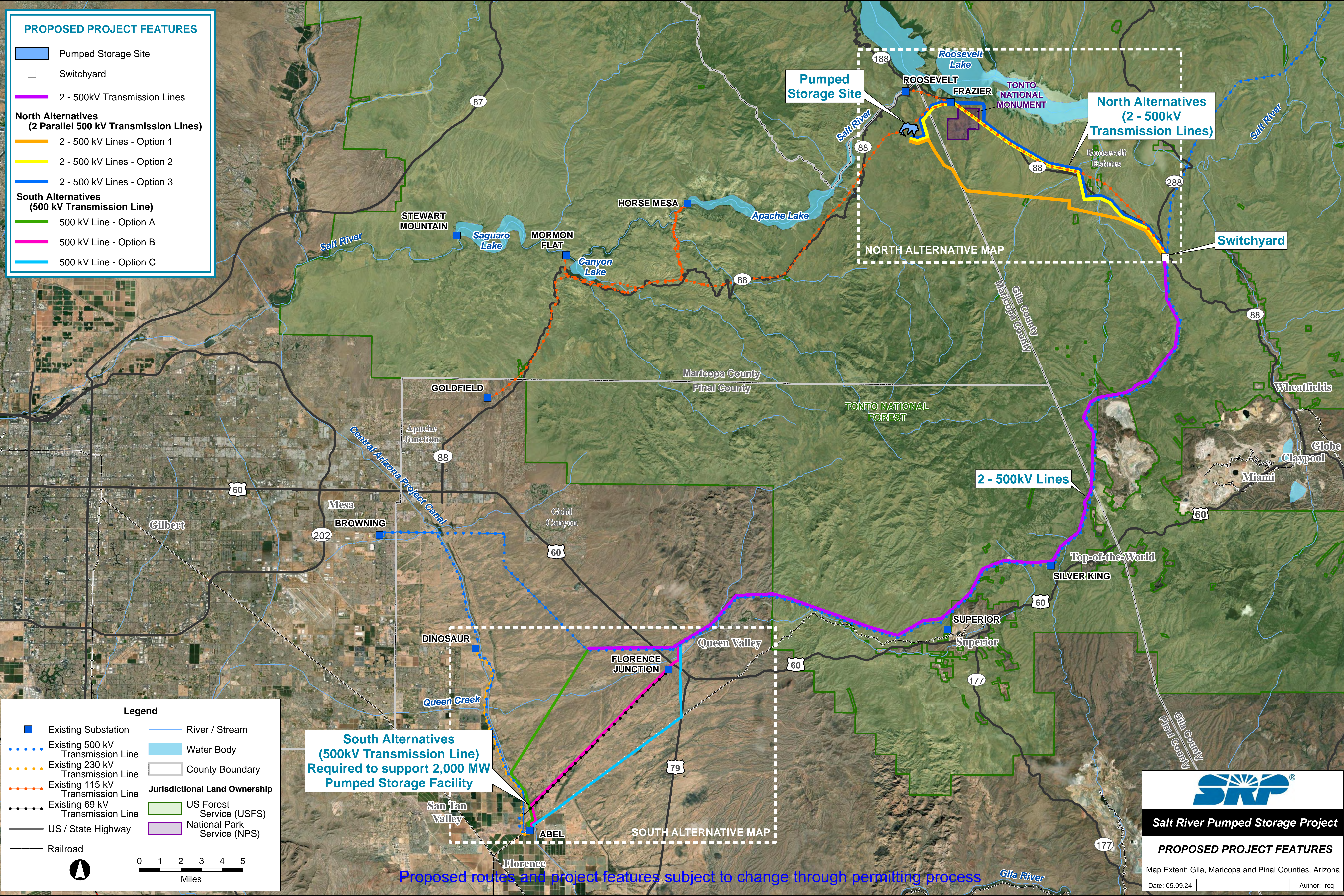


**PROPOSED PROJECT FEATURES**

- Pumped Storage Site
- Switchyard
- 2 - 500kV Transmission Lines
- North Alternatives (2 Parallel 500 kV Transmission Lines)**
- 2 - 500 kV Lines - Option 1
- 2 - 500 kV Lines - Option 2
- 2 - 500 kV Lines - Option 3
- South Alternatives (500 kV Transmission Line)**
- 500 kV Line - Option A
- 500 kV Line - Option B
- 500 kV Line - Option C




**Legend**

<span style="display: inline-block; width: 10px; height: 10px; background-color: blue; border: 1px solid black; margin-right: 5px;"></span> Existing Substation	<span style="display: inline-block; width: 15px; border-bottom: 1px solid blue; margin-right: 5px;"></span> River / Stream
<span style="display: inline-block; width: 15px; border-bottom: 1px dashed blue; margin-right: 5px;"></span> Existing 500 kV Transmission Line	<span style="display: inline-block; width: 15px; height: 10px; background-color: lightblue; border: 1px solid black; margin-right: 5px;"></span> Water Body
<span style="display: inline-block; width: 15px; border-bottom: 1px dashed orange; margin-right: 5px;"></span> Existing 230 kV Transmission Line	<span style="display: inline-block; width: 15px; border-bottom: 1px dashed gray; margin-right: 5px;"></span> County Boundary
<span style="display: inline-block; width: 15px; border-bottom: 1px dashed red; margin-right: 5px;"></span> Existing 115 kV Transmission Line	<b>Jurisdictional Land Ownership</b>
<span style="display: inline-block; width: 15px; border-bottom: 1px dashed black; margin-right: 5px;"></span> Existing 69 kV Transmission Line	<span style="display: inline-block; width: 15px; height: 10px; background-color: lightgreen; border: 1px solid black; margin-right: 5px;"></span> US Forest Service (USFS)
<span style="display: inline-block; width: 15px; border-bottom: 2px solid black; margin-right: 5px;"></span> US / State Highway	<span style="display: inline-block; width: 15px; height: 10px; background-color: lightpurple; border: 1px solid black; margin-right: 5px;"></span> National Park Service (NPS)
<span style="display: inline-block; width: 15px; border-bottom: 1px dashed black; margin-right: 5px;"></span> Railroad	

0 1 2 3 4 5 Miles

**South Alternatives (500kV Transmission Line) Required to support 2,000 MW Pumped Storage Facility**



**Salt River Pumped Storage Project**

**PROPOSED PROJECT FEATURES**

Map Extent: Gila, Maricopa and Pinal Counties, Arizona

Date: 05.09.24 Author: rcq

Proposed routes and project features subject to change through permitting process



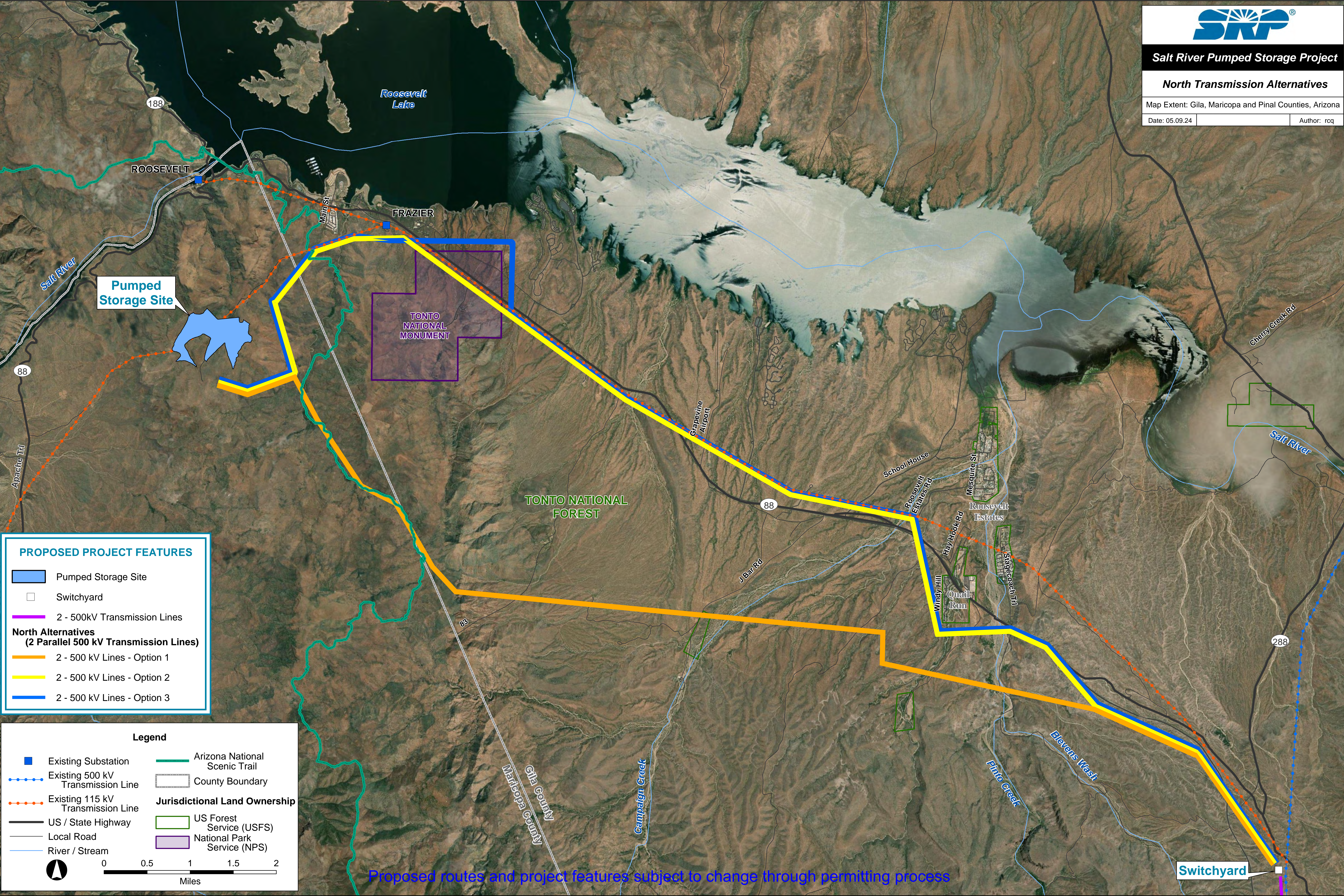
# Salt River Pumped Storage Project

## North Transmission Alternatives

Map Extent: Gila, Maricopa and Pinal Counties, Arizona

Date: 05.09.24

Author: rcq



**PROPOSED PROJECT FEATURES**

- Pumped Storage Site
- Switchyard
- 2 - 500kV Transmission Lines

**North Alternatives (2 Parallel 500 kV Transmission Lines)**

- 2 - 500 kV Lines - Option 1
- 2 - 500 kV Lines - Option 2
- 2 - 500 kV Lines - Option 3

**Legend**

<span style="display:inline-block; width:10px; height:10px; background-color:blue; border:1px solid black;"></span> Existing Substation	<span style="display:inline-block; width:10px; border-bottom:2px solid green;"></span> Arizona National Scenic Trail
<span style="display:inline-block; width:10px; border-bottom:2px dashed blue;"></span> Existing 500 kV Transmission Line	<span style="display:inline-block; width:10px; border-bottom:2px solid gray;"></span> County Boundary
<span style="display:inline-block; width:10px; border-bottom:2px dashed orange;"></span> Existing 115 kV Transmission Line	<b>Jurisdictional Land Ownership</b>
<span style="display:inline-block; width:10px; border-bottom:2px solid black;"></span> US / State Highway	<span style="display:inline-block; width:10px; border:1px solid green;"></span> US Forest Service (USFS)
<span style="display:inline-block; width:10px; border-bottom:2px solid gray;"></span> Local Road	<span style="display:inline-block; width:10px; border:1px solid purple;"></span> National Park Service (NPS)
<span style="display:inline-block; width:10px; border-bottom:2px solid blue;"></span> River / Stream	

0 0.5 1 1.5 2 Miles

Proposed routes and project features subject to change through permitting process

Switchyard

