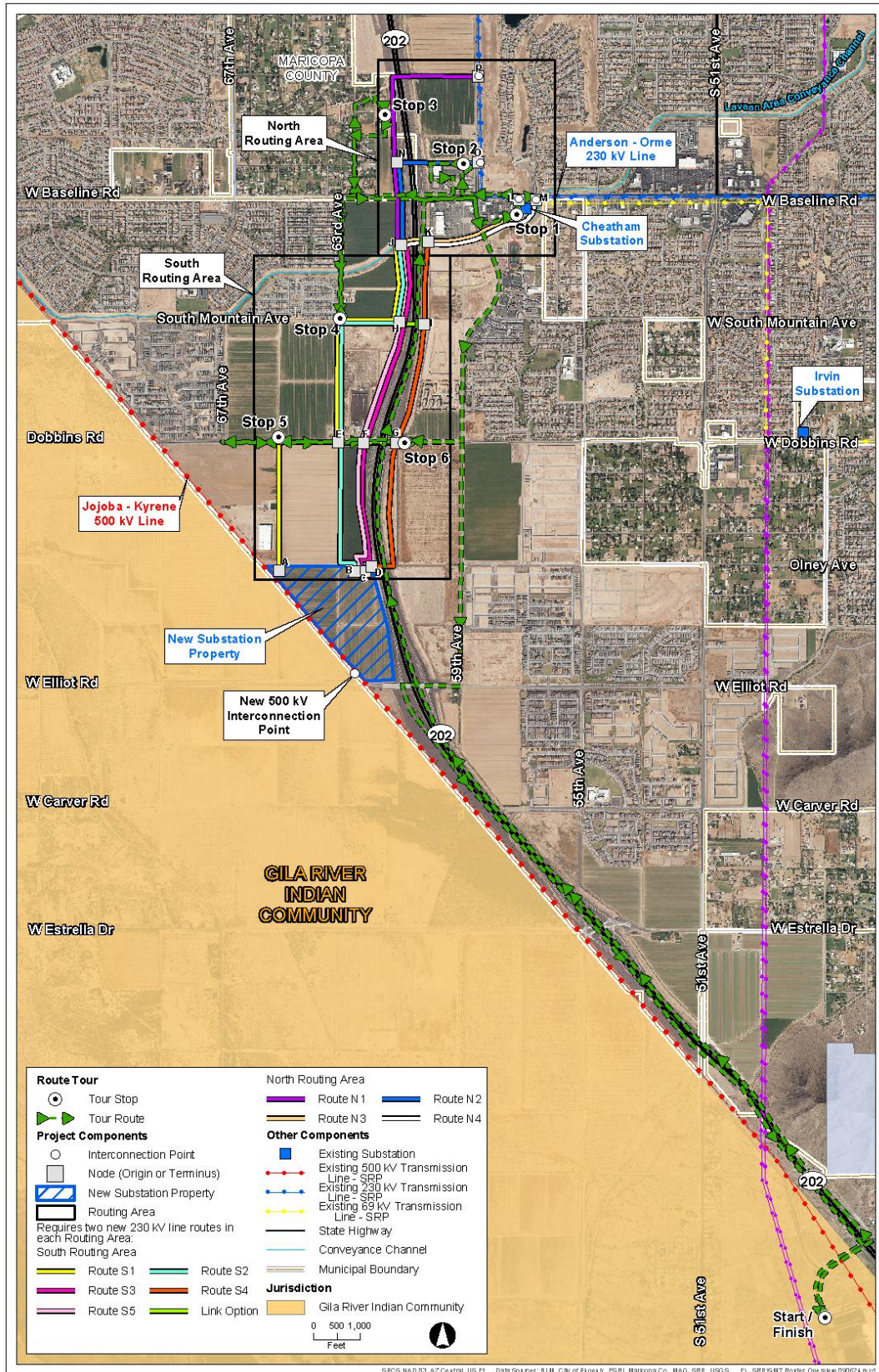


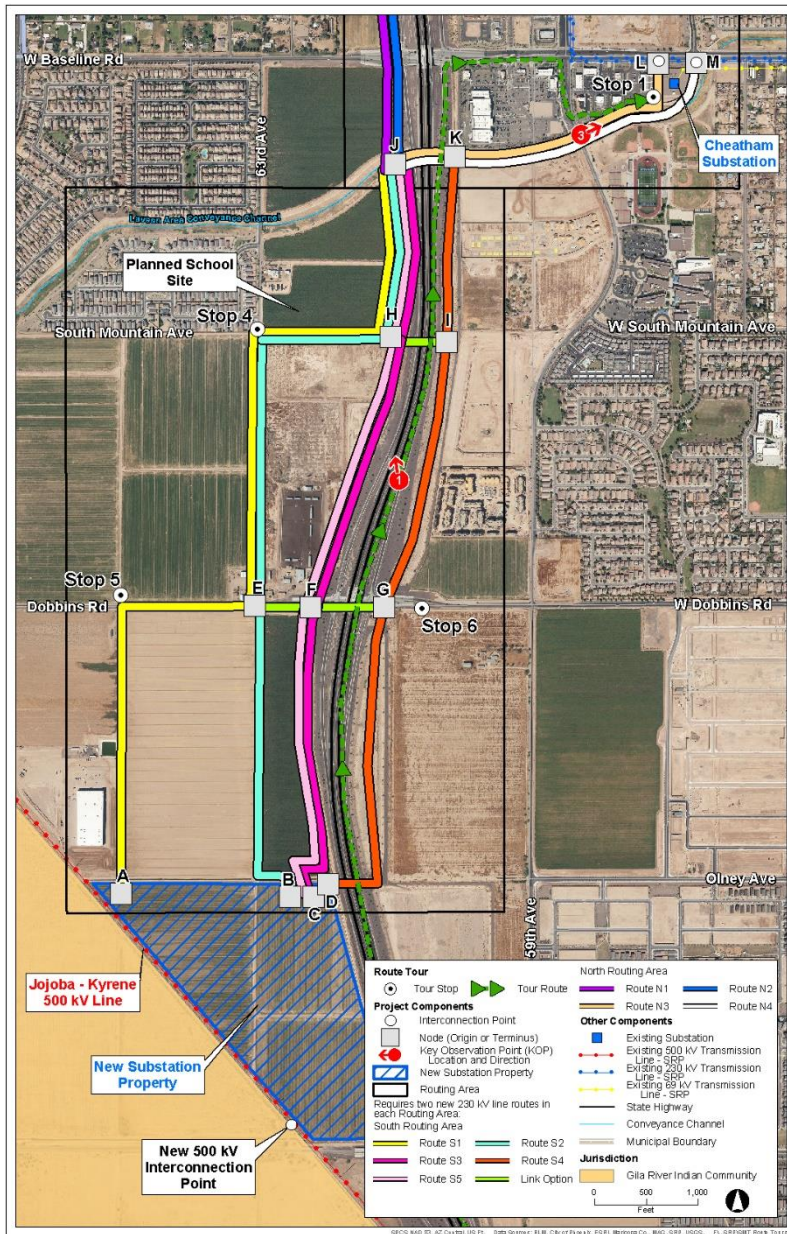
Route Tour for South Mountain Transmission Project



Directions: Exit the Hotel parking lot on Vee Quiva Way, then turn left onto the Loop 202 north on-ramp. Continue north on Loop 202.

Script: We are getting on Loop 202 North. As you can see, to the west is the existing SRP Jojoba - Kyrene 500 kV transmission line. The ROW is the boundary of the Gila River Indian Community and then you can see New Substation property to the west.

As we drive along the Loop 202, there are proposed routes on both sides of the Loop 202 from Olney Avenue to the Laveen Area Conveyance Channel (LACC) before Baseline Road. There are segment Link Options providing options from the west side of the Loop 202 to the east side of the Loop 202 at Olney Avenue, Dobbins Road, and South Mountain Avenue alignment. We will also cross the LACC which is the point we transition from the South Routing Area to North Routing Area.



STOP 1

Directions: Take exit 71 for Baseline Road. Turn right on Baseline Road and then take a right on 59th Avenue. Take the second left, after Valvoline, into the shopping center parking lot. Park to the south of ALDI.

Script: We are approaching Elliot Road. To the west, you can see the New Substation Property that is part of the South Mountain Transmission Project. The New Substation property is bound to the south by Elliot Road and Olney Avenue to the north. As we pass Olney Avenue, I would like to note that Route S4 would cross Loop 202 around here and Routes S3 and S5 would be on the west side of Loop 202. Routes S1 and S2 would be further to the west.

As we approach Dobbins Road, if you look to the west, you can see where Route S1 would turn east and meet with Route S2 to go north on the 63rd Avenue alignment. Link Option E-F would be to the west, and Link Option F-G would cross Loop 202.

To the west is The Crossing at Dobbins PAD, which stretches north to South Mountain Avenue. To the east is the Weylyn Apartment

complex, which is actively leasing units while construction finishes. To the north are three residential PADs, Ascend at South Mountain, Hawkins Apartments, and the Village at Carver Mountain.

KOP 1 is located here looking northwest. See Figure E-2b for the simulation of proposed conditions at this location.

We are now approaching the South Mountain Avenue alignment. This is where Link Option H-I crosses Loop 202. To the west Laveen Village LLC PAD which is the planned elementary school site, and just north of that is a planned multi-family development. To the east is the Laveen Park Place Phase II Retail development site, which would include a Harkins Theater.

As we exit Loop 202, you can see the LACC, where Routes N3 and N4 cross over Loop 202 between Nodes J and K.

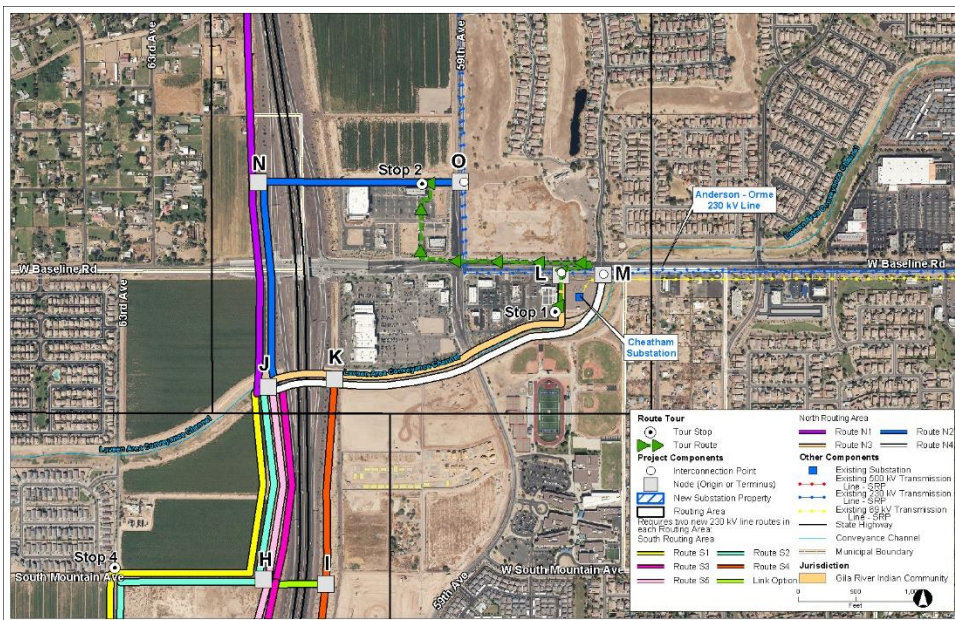
We are now on Baseline Road, and you can see the vast commercial nature developing here. To the south is the Laveen Park Place Phase I development and to the north is the Laveen Spectrum Development. To the north and ahead of us, you can see the existing 230 kV infrastructure of the 230 kV Orme - Anderson transmission line.

As we enter the parking lot, to the south is the LACC, where Routes N3 and N4 would be located.

KOP 3 is located just south of us, on the walking path, looking northeast along the LACC. See Figures E-4b and E-4c for simulations of proposed conditions at this location.

STOP 1. LACC and Cheatham Substation and Routes N3 and N4

Script: To the southwest, we can see the LACC corridor, which Routes N3 and N4 would follow. Route N3 would turn north at our location and run on the west side of Cheatham Substation to interconnect to the 230 kV Anderson - Orme transmission line at Node L. Node L is located to the north. Route N4 would continue along the LACC to the east side of Cheatham Substation, where it would interconnect with the 230 kV Anderson-Orme transmission line at Node M.



STOP 2

Directions:

Turn right on Baseline Road. Make a U-turn at 57th Avenue. Take your first right into the Laveen Spectrum parking lot. Park behind Thai Chili 2go.

Script:

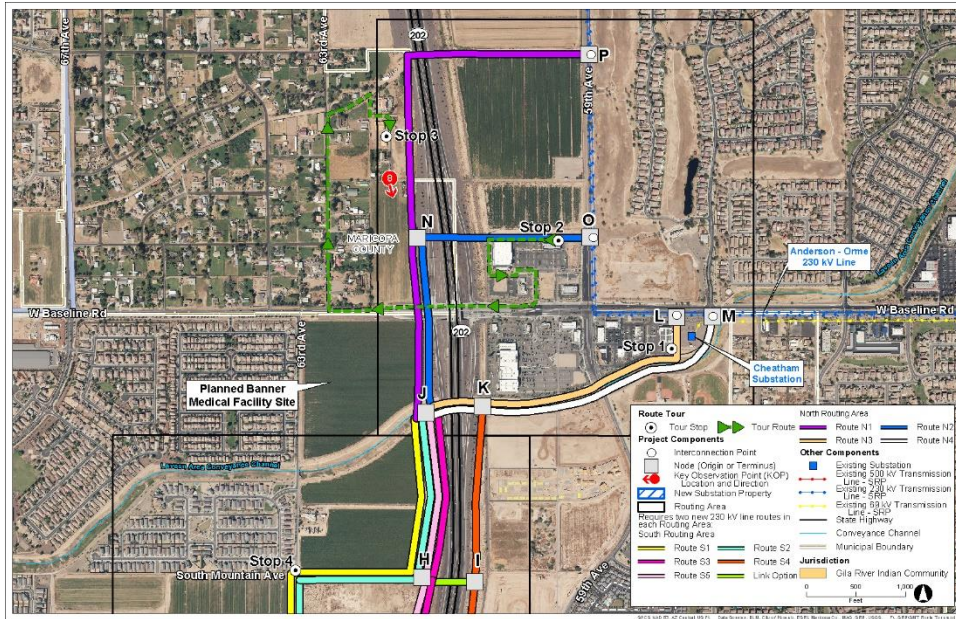
As we exit the parking lot, to the east is Cheatham Substation. Ahead of us is the existing 230 kV infrastructure of the

Anderson - Orme line along Baseline Avenue. Route N3 would be located along the west side of Cheatham Substation and interconnect here at Node L.

We are back on Baseline Road, and again you can see the existing 230 kV infrastructure of the Anderson - Orme line. As we pass 59th Avenue, the Anderson - Orme line turns and travels north along the 59th Avenue alignment.

STOP 2. Route N1 and Route N2 and location and interconnection point at Node O

Script: Route N2 would run west to east along the backside of this shopping center and interconnect to the Anderson - Orme transmission line to the east, Node O. You can see where Route N1 would be located in the distance. Directly south of where Route N1 would be, is the Laveen Spectrum Multi-family.



STOP 3
Directions: Head west and drive around the back of EōS Fitness, then exit the parking lot. Turn right on Baseline Road. Turn right on 63rd Avenue and continue straight for about 0.3 miles. Turn right on Vineyard Avenue, then take your first right onto 62nd Drive. Pull off to the side of the road to the west of

the Billboard.

Script: As we head west along the backside of the shopping center, to the north would be Route N2. Route N2 would cross Loop 202 straight ahead.

We are back on Baseline Road, heading west under Loop 202.

If you look to the south, you can see where Routes N1 and N2 connect to the southern routes at the LACC. To the north you can see where routes N1 and N2 would run north on the west side of Loop 202. Also to the south is the planned Banner Health medical facility site.

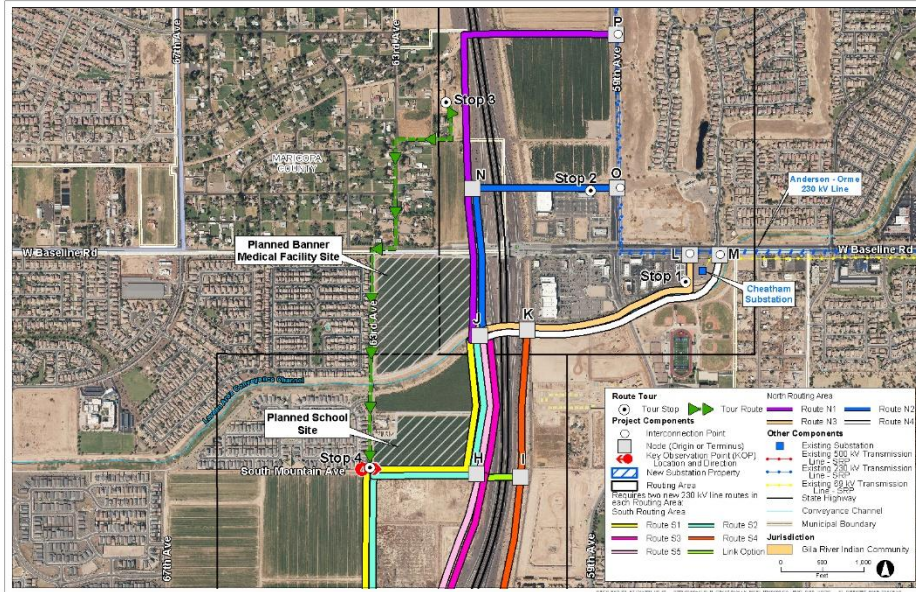
As we head north on 63rd Avenue, we are entering into the Rancho Grande neighborhood, which is located in a Maricopa County Island. As we pass this vacant lot, you can see Loop 202 to the east. Route N1 would be located on the west side of Loop 202.

STOP 3. Route N1 location and interconnection point at Node P

Script: Looking to the south, Route N1 would run north along the west side of Loop 202. Looking to the northeast, Route N1 would continue north until Vineyard Road, where it would turn to the east, and travel along Vineyard Road to interconnect to the Anderson - Orme transmission line, Node P.

We can also see the active construction on the properties just east of Loop 202. These are part of the Laveen Spectrum planned developments.

KOP 8 is located to the south, facing southeast. Refer to Figures E-9b and E-9c for simulations of proposed conditions at this location.



STOP 4

Directions: Head south on 62nd Drive. Take a right at the dead end, and then turn left onto 63rd Avenue. Turn right onto Baseline Road, then take the first left onto 63rd Avenue. Drive until the dead end of 63rd Avenue and pull off to the side of the road for Stop 4.

Script: As we head south on 62nd Drive, to the east we have a view of Route N1.

Looking southeast from here, you can see where Route N1 would be travelling north, and where Route N2 would turn east to cross over Loop 202.

We are back on Baseline Road and will be heading south on 63rd Avenue. To the east is the planned Banner Health medical facility site. Routes N1 and N2 would be located adjacent to Loop 202. To our west, is the Avalon Village neighborhood.

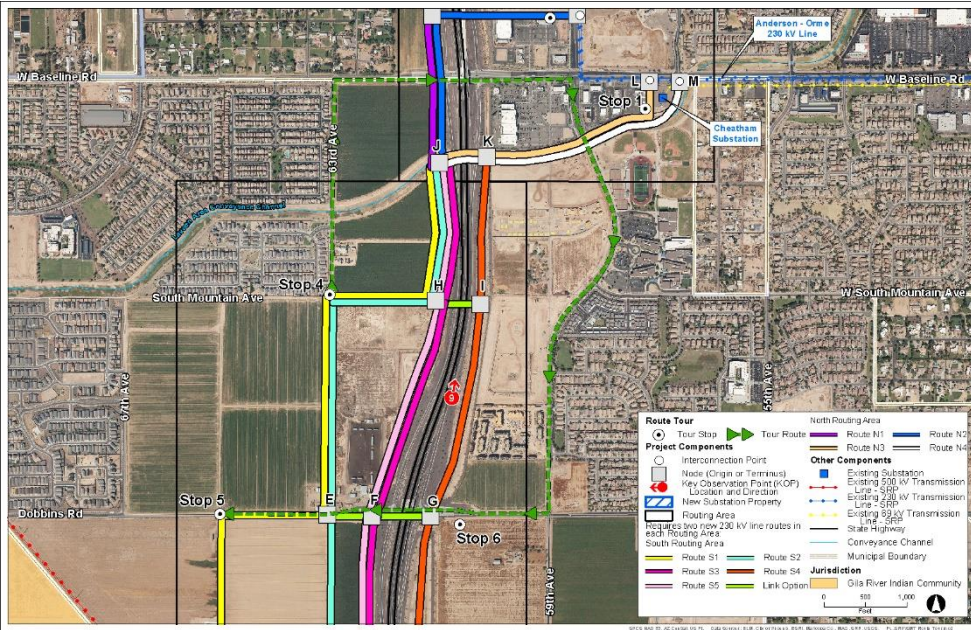
Directly south of the LACC on the west is the Laveen Baseline LLC PAD which is a proposed multifamily development site. There is also a standalone residence located on the east side of 63rd Avenue here. To the west is the Estrella Vista neighborhood. As we approach Stop 4, to the east is the planned elementary school site that is part of the Laveen Baseline LLC PAD.

Stop 4. Routes S1 and S2 locations

Script: Looking south, Routes S1 and S2 would run north south along the 63rd Avenue alignment, which is currently between two agricultural fields. To the east of these alignments is The Crossing at Dobbins PAD and to the west is Amazon Data Services PAD.

At this location, facing east, is KOP 4. Figures E-5b, E-5c, and E-5d show proposed conditions from this location, looking towards Loop 202.

The residence to our west would be the nearest residence to the proposed routes.



STOP 5

Directions: Turn right on Baseline Road. Turn right on 59th Avenue. Turn right on Dobbins Road. Pull off to the side of the road for Stop 5.

Script: Looking to the east, Routes S1, S2, S3, and S5 would be located adjacent to Loop 202 from the South Mountain Avenue alignment

to the LACC.

We are back on Baseline Road. As we head south on 59th Avenue we will be passing a number of PADs under construction to the west. Immediately south of the LACC, is the Laveen Park Place Phase II retail development, which plans to include a Harkins Theater and multifamily residences. Looking east, you can see Loop 202. Route S4, between Nodes I and K, would be located adjacent to Loop 202 on the east side.

The Ascend at South Mountain development is directly south of the Laveen Park Place Phase II retail development, to the west. To the east are the buildings of Betty H. Fairfax High School, and to your west is the Laveen Park Place Hawkins Apartment development. To the west is now the Village at Carver Mountain development. To the east is the existing Paseo Pointe neighborhood.

KOP 9 is located northbound on Loop 202 to the east, looking northeast. See Figure E-10b for the simulation of proposed conditions at this location.

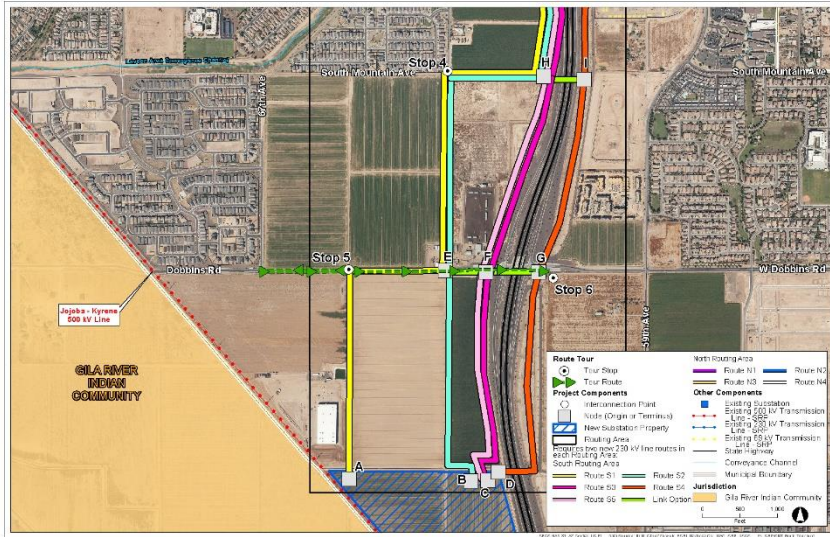
To the west, adjacent to Loop 202, is the Weylyn Apartment complex, which is newly constructed and is currently leasing units. As we approach Dobbins Road, looking west, you can see where Route S4 would be located along the east side of Loop 202.

As we approach Node G, to the north and south, Route S4 would be located adjacent to Loop 202. This is also where Link Option Node F-G crosses over Loop 202. After going under Loop 202, to your north and south is the corridor that Routes S3 and S5 would run adjacent to Loop 202. Link Option Node E-F would be parallel to Dobbins Road here. Looking to the north, as we pass the 63rd Avenue alignment, you can see where Routes S1 and S2 would be located.

Looking to the south, Route S2 would be located along the 63rd Avenue alignment, connecting into the New Substation property. Route S1 would be located parallel to Dobbins Road here.

Stop 5. Route S1 and the New Substation Property

Script: Looking to the south, we can see where Route S1 would be located along the South Mountain Avenue Alignment and would connect to the New Substation property. To the west of where Route S1 would be located is the Dobbins Industrial and Tech Park Phase 1 development, and to the east is Amazon Data Services the Envision Dobbins 202 West development. Directly north of us is Amazon Data Services . Looking to the northeast, we can see where Routes S1 and S2 would be located along the 63rd Avenue alignment and where they turn east to go to Loop 202.



south we see the corridor for Routes S3 and S5.

STOP 6. Route S4

Script: We are at Node G. Looking to the north and south we can see Route S4 east of Loop 202. To the north we can view the Weylyn Apartments and the planned area developments to the north, and their proximity to Loop 202.

Return to Vee Quiva

Directions: Head east on Dobbins Road. Turn right at 59th Avenue. Turn Right on Elliot Road. Cross Loop 202 and turn left onto the south bound Loop 202 on-ramp. Take exit 66 onto Vee Quiva Way.

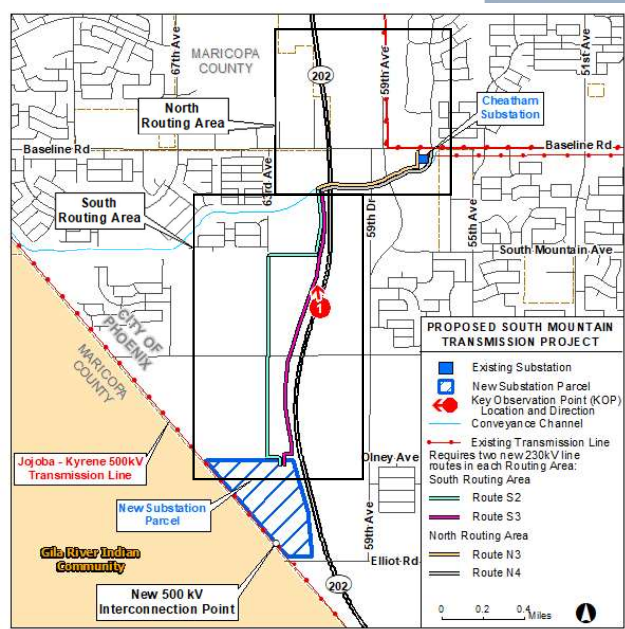
Script: That was our last stop on the route tour for the South Mountain Transmission Project. We are now heading back to the Vee Quiva Resort.

STOP 6

Directions: Turn around on Dobbins Road. Travel east under Loop 202. Pull off on the side of the road.

Script: We will turn around next to the McClellan Ranch neighborhood. Again, to the south is where Route S1 would be located. To your north, Routes S1 and S2 are in the same corridor. Along Loop 202, looking to the north and

This is for graphic representation only, and exact structure locations have not been determined.

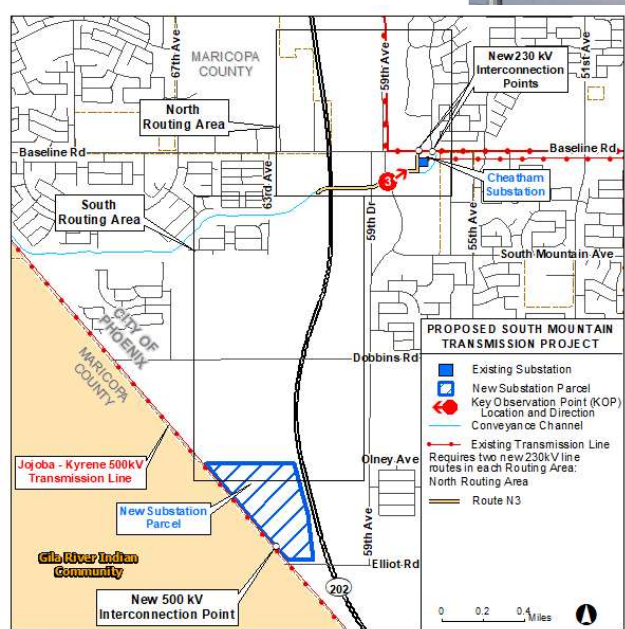


Proposed Conditions, Routes S2, S3, N3, N4
Loop 202 Looking North

KOP 1

Figure E-2b

This is for graphic representation only, and exact structure locations have not been determined.

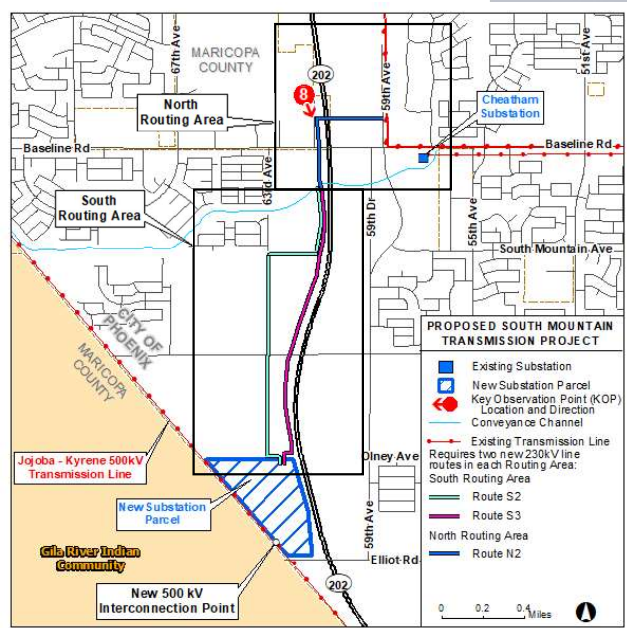


**Proposed Conditions, Route N3
Conveyance Channel Looking Northeast**

KOP 3

Figure E-4c

This is for graphic representation only, and exact structure locations have not been determined.

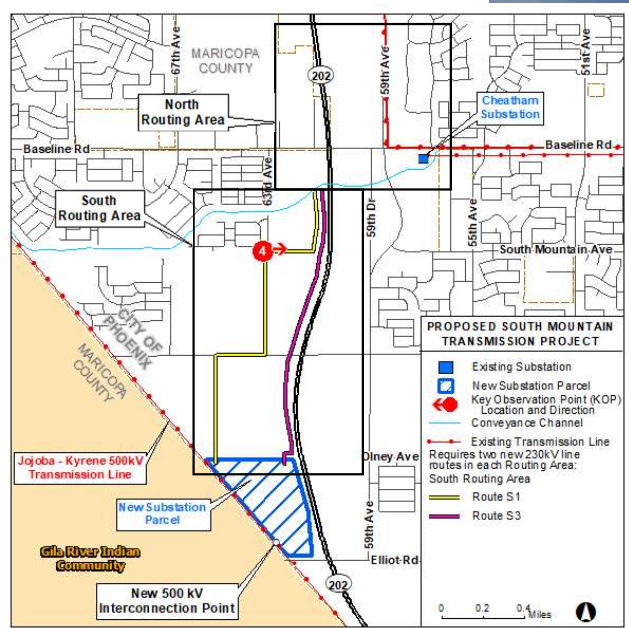


**Proposed Conditions, Route N2, S2, S3
South 62nd Avenue Looking Southeast**

KOP 8

Figure E-9c

This is for graphic representation only, and exact structure locations have not been determined.

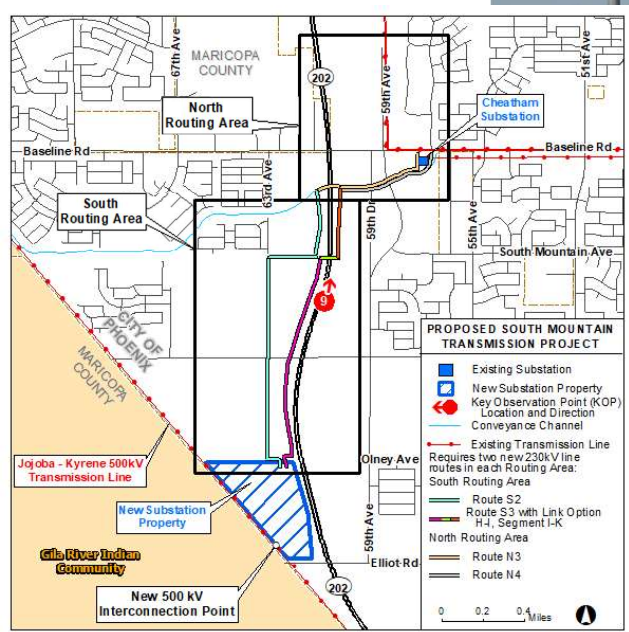


**Proposed Conditions, Routes S1, S3
South of 6311 West Magdalena Lane Looking East**

KOP 4

Figure E-5d

This is for graphic representation only, and exact structure locations have not been determined.

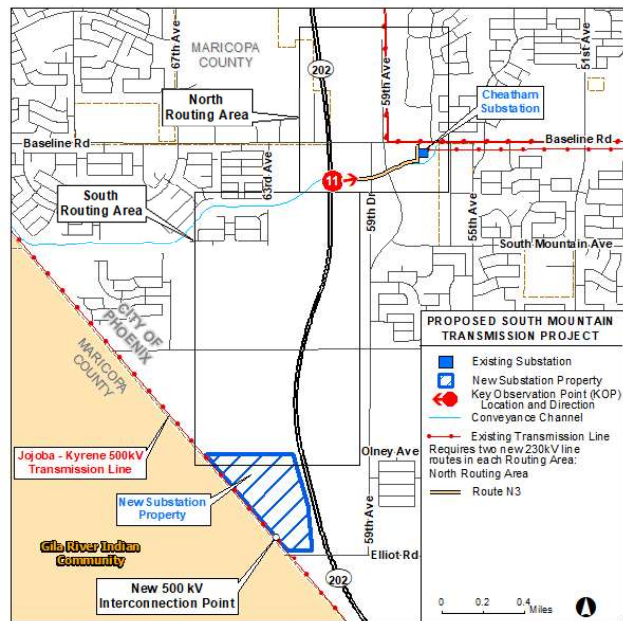


**Proposed Conditions, Routes S2, S3 to Segments H-I-K, N2, N3
Highway 202 Northbound Looking Northeast**

KOP 9

Figure E-10b

This is for graphic representation only, and exact structure locations have not been determined.



**Proposed Conditions, Route N3
Highway 202 Northbound Looking East**

KOP 11

Figure E-12b