

EXHIBIT F RECREATIONAL PURPOSES AND ASPECTS

In accordance with Arizona Administrative Code R14-3-219, the Applicant provides the following information:

State the extent, if any, the proposed site or route will be available to the public for recreational purposes, consistent with safety considerations and regulations, and attach any plans the Applicant may have concerning the development of the recreational aspects of the proposed site or route.

Existing Conditions

Regional recreation information near the proposed South Mountain Transmission Project (SMT Project or Project) and for the region and surrounding areas was gathered from Maricopa County and the City of Phoenix, Arizona.

Regionally, Maricopa County has a diverse geography which offers a multitude of recreational opportunities. The terrain within the county ranges from the broad, sloping alluvial plain south of the Phoenix metropolitan area to rugged mountain formations within areas of the southern portion of the county, like the Sonoran Desert National Monument, and in the eastern portion of the county within the Tonto National Forest. Within the large area encompassed by Maricopa County, there also exists regional and local parks associated with various mountain ranges such as the Estrella Mountains, South Mountains, Phoenix Mountains, McDowell Mountains, Utery Mountains, and the Santan Mountains.

The recreational activities more specific to the Project area within the City of Phoenix range from more developed activities in mixed-use areas such as organized sports areas, designated open spaces in subdivisions, and community and neighborhood parks. The majority of recreational areas within close proximity of the Project are neighborhood parks, sports and recreational facilities, trails, and open space.

Specifically, the recreational areas within 1,000 feet of the Project, shown on **Figure F-1**, are described below.

A multi-use trail, designated by the City of Phoenix, runs along the Laveen Area Conveyance Channel (LACC), which the Project crosses and is adjacent to (City of Phoenix, 2024). The multi-use trail is utilized for recreational purposes such as walking and biking. The LACC corridor includes stone sculptures, seat walls, desert trees, shrubs, and flowering plants along the conveyance channel's recreational trail (City of Phoenix, 2008). Route N3 and Route N4 are proposed along the LACC.

Located approximately 150 feet south of Route N3 and Route N4 are sports fields associated with Betty H. Fairfax High School. The fields include baseball fields, tennis courts, and a football field.

Approximately 600 feet northwest of Route S1 and Route S2 are several parks in the Estrella Vista neighborhood. These parks are primarily comprised of grass fields and open space. There is an additional neighborhood park located approximately 850 feet northeast of the interconnection point east of Cheatham Substation in the Cottonfields Ranch neighborhood. This park consists of green space, a playground, and a basketball half-court. Located approximately 950 feet east of Route S4 is a neighborhood park in the Paseo Pointe Neighborhood. This park is comprised of a grass field and trees.

The Maricopa and Sun Circle trails are located between the southwest border of the New Substation and the edge of Gila River Indian Community (GRIC) land, which is approximately 200 feet southwest of Route S1 (Maricopa County, 2021).

In addition, an inactive golf course is located directly east of Route N1 and Route N2 near the interconnection points to the Anderson – Orme 230 kilovolt (kV) transmission line in the Cottonfields Ranch neighborhood. This course, Southern Ridge Golf Club, was abandoned in 2019 due to poor management and is currently in a state of disrepair (Laveen 140, 2024). The land is not currently a recreational resource. However, there are plans to redevelop the previous golf course land into a new golf course and single-family homes. According to The Score at Cottonfields plan, the planned golf course would not be located adjacent to the interconnection on the Anderson – Orme 230 kV transmission line (Laveen 140, 2024).

Potential Effects

The Project will not create a public recreation use; however, the Project will not preclude recreational uses in the area around the Project routes after construction.

Specifically, the only routes that directly impact recreational areas are Route N3 and Route N4 which run adjacent to the LACC and is designated as a recreation resource by the City of Phoenix. In addition, Route N1 and Route N2 cross the LACC. The multi-use trail along the LACC is a dedicated space for pedestrians and bicycles to travel on. If closures of parts of the trail were necessary during construction, Salt River Project Agricultural Improvement and Power District (SRP) will work with the City of Phoenix to ensure that the trail is minimally impacted during construction and will remain open for recreational purposes.

To maintain high quality of services and facilities, SRP will work with the City of Phoenix and Maricopa County during the construction phase to ensure compliance with the City of Phoenix's and Maricopa County's General Plans and the residential open space and neighborhood parks.

References

City of Phoenix. 2024. City Trail System Figure. Accessed 7/22/2024. Located at: https://www.phoenix.gov/pddsit/Document/PlanPHX_City_Trail_System.pdf.

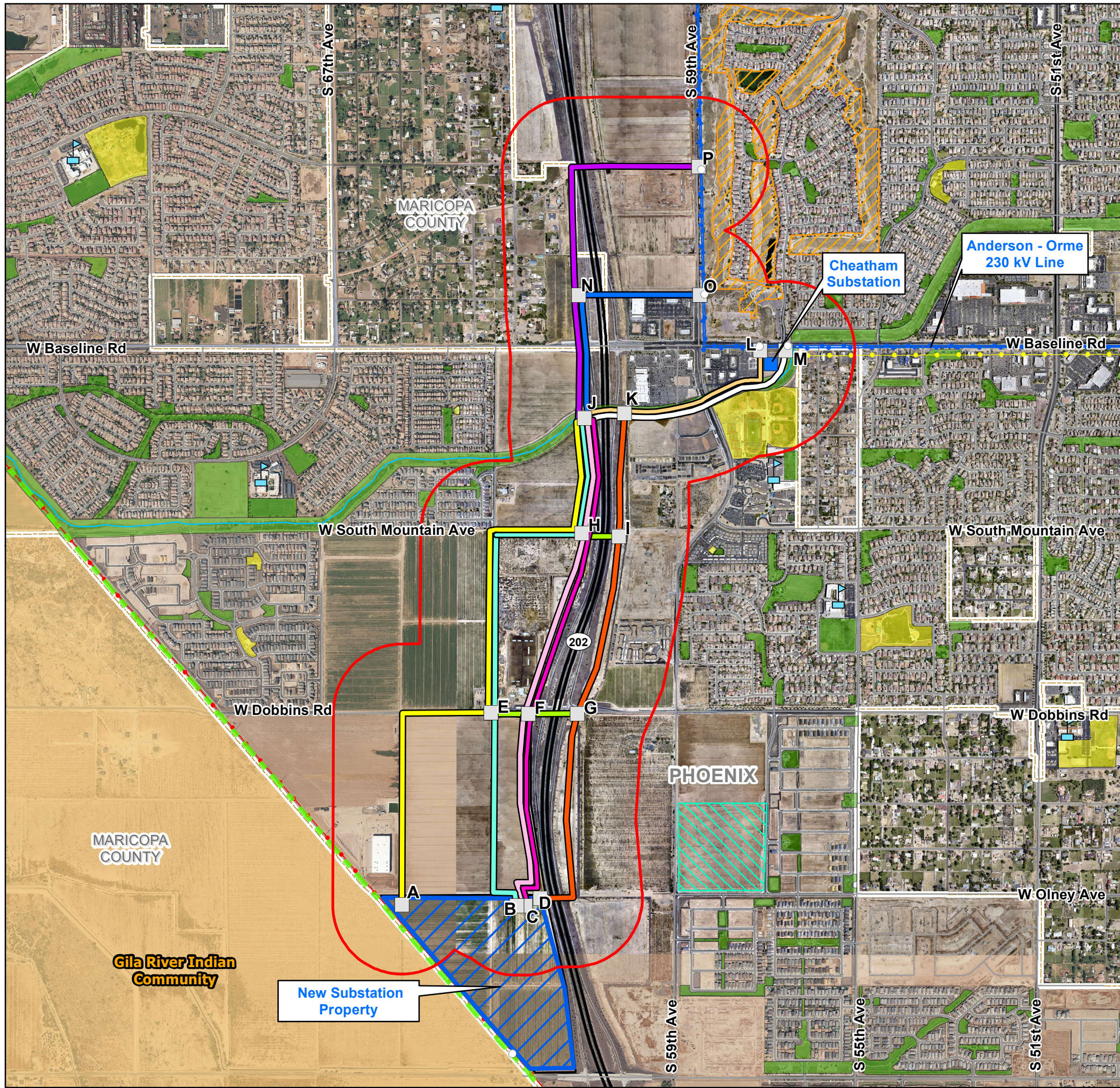
City of Phoenix. 2008. Laveen Conveyance Channel. Accessed 7/22/2024. Located at: <https://www.phoenix.gov/arts/public-art-program/explore-the-collection/nectarcorridor>.

Laveen 140. 2024. The Score at Cottonfields. Accessed: 7/12/2024. Located at: https://www.phoenix.gov/pddsit/Document/PZ/06.%20Cottonfields_PUD%20Narrative_2.7.2_4.pdf.

Maricopa County. 2016. Vision 2030 Comprehensive Plan. Accessed 7/11/2024. Located at: <https://www.maricopa.gov/DocumentCenter/View/3786/Vision-2030-Maricopa-County-Comprehensive-Plan-PDF>.

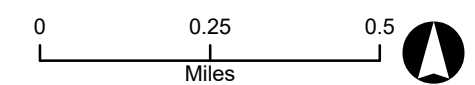
Maricopa County. 2024. Maricopa County Planning and Development Department GIS PlanNet. [Online] Located at: <https://gis.maricopa.gov/PND/PlanNet/index.html>.

Maricopa County. 2021. Maricopa & Sun Circle Trails. Accessed 7/11/2024. Located at: [regional-trail-www-bw-without-MT-across-851.pdf](https://www.maricopacountyparks.net/regional-trail-www-bw-without-MT-across-851.pdf) (maricopacountyparks.net).



Legend

- Project Components**
- Interconnection Point
 - ▭ New Substation Property
 - ▭ Node (Origin or Terminus)
 - ▭ 1000-Footer Buffer of Project Site
- Requires two new 230kV line routes in each Routing Area:
- South Routing Area**
- ▬ Route S1
 - ▬ Route S3
 - ▬ Route S5
 - ▬ Route S2
 - ▬ Route S4
 - ▬ Link Option
- North Routing Area**
- ▬ Route N1
 - ▬ Route N3
 - ▬ Route N2
 - ▬ Route N4
- Other Components**
- ▭ Existing Substation
 - ▬ Anderson - Orme 230kV Transmission Line
 - ▬ Existing 69 kV Transmission Line - SRP
 - ▬ Road
 - ▬ Municipal Boundary
 - ▬ Jojoba - Kyrene 500 kV Transmission Line
 - ▬ Existing 230 kV Transmission Line - Other
 - ▬ State Highway
 - ▬ Conveyance Channel
 - ▭ School
- Recreation**
- ▬ Trail
 - ▭ Future Park
 - ▭ Recreational Facility
 - ▭ Future Golf Course
 - ▭ Park / Open Space
- Jurisdiction**
- ▭ Gila River Indian Community Land



SRP

PROPOSED SOUTH MOUNTAIN TRANSMISSION PROJECT

Figure F-1 Recreation

Map Extent: Maricopa County, AZ

Date: 09.12.24 Author: ckww