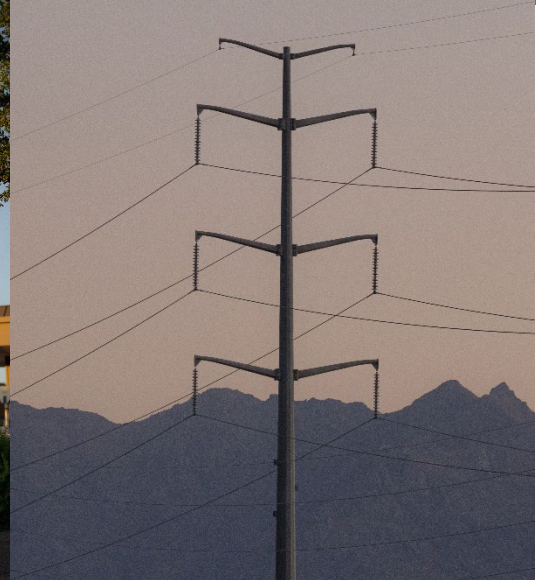


South Mountain Transmission Project



Application for a Certificate of Environmental Compatibility

Prepared for:
Arizona Power Plant and Transmission Line Siting Committee

Prepared by:
Salt River Project



Delivering water and power®

September 2024

TABLE OF CONTENTS

LIST OF ACRONYMS

INTRODUCTION

- FIGURE 1 Proposed Route Options with Nodes
- FIGURE 2 Preferred Route Options with Nodes

APPLICATION

EXHIBIT A: PROJECT LOCATION AND LAND USE

- TABLE A-1 City of Phoenix Land Use Designations
- TABLE A-2 Maricopa County Land Use Designations
- TABLE A-3 City of Phoenix Zoning Districts
- TABLE A-4 Maricopa County Zoning Districts

- FIGURE A-1 Jurisdiction within a 20-mile buffer
- FIGURE A-2 Jurisdiction within a 2-mile buffer
- FIGURE A-3 Existing Land Use, City of Phoenix
- FIGURE A-4 Existing Land Use, Maricopa County
- FIGURE A-5 City of Phoenix Zoning
- FIGURE A-6 Maricopa County Zoning

EXHIBIT B: ENVIRONMENTAL STUDIES

EXHIBIT C: AREAS OF BIOLOGICAL WEALTH

- TABLE C-1 U.S. Fish And Wildlife Service (USFWS) – Listed Species
- TABLE C-2 Other Special-Status Species that May Occur in the Vicinity of the Project
- TABLE C-3 SRP Proposed Measures

- EXHIBIT C-1 USFWS Information for Planning and Consulting (IPaC) Results
- EXHIBIT C-2 Arizona Game and Fish Department (AGFD) Online Environmental Review Tool Results
- EXHIBIT C-3 AGFD Correspondence

EXHIBIT D: BIOLOGICAL RESOURCES

- EXHIBIT D-1 Biological Resources Tables

- TABLE D-1 Plant Species – Potential Occurrence in Isolated Disturbed/Native Habitats in the Vicinity of the Project Area
- TABLE D-2 Mammal Species – Potential Occurrence in the Vicinity of the Project Area
- TABLE D-3 Bird Species – Potential Occurrence in the Vicinity of the Project Area
- TABLE D-4 Reptile And Amphibian Species – Potential Occurrence in the Vicinity of the Project Area

EXHIBIT E: SCENIC AREAS, HISTORICAL SITES AND STRUCTURES, ARCHAEOLOGICAL SITES

TABLE E-1	Previous Investigations Intersecting the APE (N=10)
TABLE E-2	Previous Investigations within the 1-mile buffer (N=21)
TABLE E-3	Previous Investigations within the 1-mile buffer (CAO) (N=53)
TABLE E-4	Previously Identified Sites within the APE (N=8)
TABLE E-5	Previously Identified Sites within the 1-mile buffer (N=30)
FIGURE E-1	Key Observation Points (KOPs) Map
FIGURE E-2a	KOP 1 Existing Conditions Loop 202
FIGURE E-2b	KOP 1 Proposed Conditions Loop 202, Routes S2, S3, N3, N4
FIGURE E-3a	KOP 2 Existing Conditions South 63 rd Avenue Alignment
FIGURE E-3b	KOP 2 Proposed Conditions South 63 rd Avenue Alignment, Routes S1, S2, N3, N4
FIGURE E-3c	KOP 2 Proposed Conditions South 63 rd Avenue Alignment, Routes S1, S2, N3, N4
FIGURE E-3d	KOP 2 Proposed Conditions South 63 rd Avenue Alignment, Routes S1, N3, N4
FIGURE E-4a	KOP 3 Existing Conditions Conveyance Channel
FIGURE E-4b	KOP 3 Proposed Conditions Conveyance Channel, Routes N3, N4
FIGURE E-4c	KOP 3 Proposed Conditions Conveyance Channel, Route N3
FIGURE E-5a	KOP 4 Existing Conditions South of West Magdalena Lane
FIGURE E-5b	KOP 4 Proposed Conditions South of West Magdalena Lane, Routes S1, S2
FIGURE E-5c	KOP 4 Proposed Conditions South of West Magdalena Lane, Routes S1, S2
FIGURE E-5d	KOP 4 Proposed Conditions South of 6311 West Magdalena Lane, Routes S1, S3
FIGURE E-6a	KOP 5 Existing Conditions East of South 63 rd Avenue
FIGURE E-6b	KOP 5 Proposed Conditions East of South 63 rd Avenue, Routes S1, S2
FIGURE E-6c	KOP 5 Proposed Conditions East of South 63 rd Avenue, Routes S1, S2, N3
FIGURE E-6d	KOP 5 Proposed Conditions East of South 63 rd Avenue, Routes S1, S2, N3, N4
FIGURE E-7a	KOP 6 Existing Conditions East of South 63 rd Avenue & Baseline Rd
FIGURE E-7b	KOP 6 Proposed Conditions East of South 63 rd Avenue & Baseline Rd, Routes N1, N2
FIGURE E-7c	KOP 6 Proposed Conditions East of South 63 rd Avenue & Baseline Rd, Route N2
FIGURE E-8a	KOP 7 Existing Conditions West of South 58 th Avenue
FIGURE E-8b	KOP 7 Proposed Conditions West of South 58 th Avenue, Route N1
FIGURE E-9a	KOP 8 Existing Conditions South 62 nd Avenue
FIGURE E-9b	KOP 8 Proposed Conditions South 62 nd Avenue, Routes N1, N2, S2, S3
FIGURE E-9c	KOP 8 Proposed Conditions South 62 nd Avenue, Routes N2, S2, S3
FIGURE E-10a	KOP 9 Existing Conditions Loop 202 Northbound
FIGURE E-10b	KOP 9 Proposed Conditions Loop 202 Northbound, Routes S2, S3 Link H-I, S4, N3, N4
FIGURE E-11a	KOP 10 Existing Conditions Loop 202 Southbound
FIGURE E-11b	KOP 10 Proposed Conditions Loop 202 Southbound Routes S1, S3 to S4 Link F-G
FIGURE E-11c	KOP 10 Proposed Conditions Loop 202 Southbound Routes S1, S3 to S4 Link H-I
EXHIBIT E-1	Class I Cultural Report

EXHIBIT E-2 Tribal Correspondence

EXHIBIT F: RECREATIONAL PURPOSES AND ASPECTS

FIGURE F-1 Recreation

EXHIBIT G: CONCEPTS OF TYPICAL FACILITIES

- FIGURE G-1 Double-Circuit 230 kilovolt (kV) Single-Pole, Braced-Post
- FIGURE G-2 Double-Circuit 230 kV Single-Pole, Davit-Suspension-Angle
- FIGURE G-3 Double-Circuit 230 kV Single-Pole, Davit-Suspension-Tangent
- FIGURE G-4 Double-Circuit 230 kV Single-Pole, DE-Davit-Angle
- FIGURE G-5 Double-Circuit 230 kV Single-Pole, DE-Davit-Angle-Vertical-V1
- FIGURE G-6 Double-Circuit 230 kV Single-Pole, DE-Davit-Angle-Vertical-V2
- FIGURE G-7 Double-Circuit 230 kV Single-Pole, DE-Davit-Inline
- FIGURE G-8 Double-Circuit 230 kV Single-Pole, DE-Vertical
- FIGURE G-9 Double-Circuit 230 kV Double-Pole, DE-Vertical
- FIGURE G-10 Double-Circuit 230 kV Single-Pole, Post
- FIGURE G-11 Double-Circuit 230 kV Single-Pole, Vertical-Braced-Post-V1
- FIGURE G-12 Double-Circuit 230 kV Single-Pole, Vertical-Braced-Post-V2
- FIGURE G-13 Single-Circuit 230 kV Single-Pole, DE-Delta-Davit
- FIGURE G-14 Single-Circuit 230 kV Single-Pole, Delta-Braced-Post
- FIGURE G-15 Single-Circuit 230 kV Single-Pole, Delta-Davit-Suspension
- FIGURE G-16 Single-Circuit 230 kV Single-Pole, Delta-Post
- FIGURE G-17 Single-Circuit 230 kV Single-Pole, DE-Vertical
- FIGURE G-18 Single-Circuit 230 kV Single-Pole, DE-Vertical-Davit
- FIGURE G-19 Single-Circuit 230 kV Single-Pole, Vertical-Braced-Post
- FIGURE G-20 Single-Circuit 230 kV Single-Pole, Vertical-Davit-Suspension
- FIGURE G-21 Single-Circuit 230 kV Single-Pole, Vertical-Post
- FIGURE G-22 Single-Circuit Riser Pole, Two Cables Per Phase
- FIGURE G-23 Single-Circuit Riser Pole, One Cable Per Phase

EXHIBIT H: EXISTING PLANS

- TABLE H-1 Planned Area Developments
 - TABLE H-2 PADS or Plans Potentially Crossed by or Adjacent to Each Route
- FIGURE H-1 Planned Area Developments

EXHIBIT I: NOISE EMISSIONS AND COMMUNICATION INTERFERENCE

- TABLE I-1 Common Noise Levels
- TABLE I-2 Typical Construction Equipment Noise Levels

EXHIBIT J: SPECIAL FACTORS

- EXHIBIT J-1 Post Card Mailings, Emails and News Releases
- EXHIBIT J-1A Phase 1
- EXHIBIT J-1B Phase 2
- EXHIBIT J-2 Briefings/Meetings and Letters of Support
- EXHIBIT J-2A Briefings/Meetings
- EXHIBIT J-2B Letters of Support

EXHIBIT J-3 Public Meeting Materials
EXHIBIT J-3A Phase 1
EXHIBIT J-3B Phase 2
EXHIBIT J-3C Summary of Comments
EXHIBIT J-4 Website
EXHIBIT J-4A Phase 1
EXHIBIT J-4B Phase 2
EXHIBIT J-5 Social Media
EXHIBIT J-5A Phase 1
EXHIBIT J-5B Phase 2
EXHIBIT J-6 Routing Study

FIGURE J-6a Project Study Area
FIGURE J-6b Opportunities & Constraints
FIGURE J-6c Routes Carried Forward for Analysis
FIGURE J-6d Routes Removed
FIGURE J-6e Final Routes Carried Forward
FIGURE J-6f Final Routes
FIGURE J-6g Preferred Routes

LIST OF ACRONYMS AND ABBREVIATIONS

ACC	Arizona Corporation Commission
ADA	Arizona Department of Agriculture
ADOT	Arizona Department of Transportation
AGFD	Arizona Game and Fish Department
APE	Area of Potential Effects
AM	Amplitude Modulation
ANPL	Arizona Native Plant Law
APLIC	Avian Power Line Interaction Committee
ARS	Arizona Revised Statute
ASLD	Arizona State Land Department
AWCS	Arizona Wildlife Conservation Strategy
BCC	Bird of Conservation Concern
BCR	Bird Conservation Region
BGEPA	Bald and Golden Eagle Protection Act
BLM	Bureau of Land Management
BMP	Best Management Practices
CAO	City of Phoenix Archaeologist Office
CCA	Candidate Conservation Agreement
CCAA	Candidate Conservation Agreement with Assurances
CEC	Certificate of Environmental Compatibility
CHPO	City Historic Preservation Office
dB	Decibel
dBA	A-weighted decibels
DNL	Day/Night Average Noise Level
EPA	Environmental Protection Agency
ESA	Endangered Species Act
FHWA	Federal Highway Administration
FM	Frequency Modulation
GRIC	Gila River Indian Community
HDMS	Heritage Data Management System
IBA	Important Bird Area
IPaC	Information for Planning and Consultation
KOP	Key Observation Points
KPE	KP Environmental, Inc.
kV	Kilovolt
LACC	Laveen Area Conveyance Channel
Loop 202	South Mountain Loop 202 Freeway
MAG	Maricopa Association of Governments
MBTA	Migratory Bird Treaty Act
MCDOT	Maricopa County Department of Transportation
MPH	Miles Per Hour
NEPA	National Environmental Policy Act
NRHP	National Register of Historic Places
PAD	Planned Area Development
PHX	Phoenix
Project	South Mountain Transmission Project
PSA	Project Study Area
PSTD	Phoenix Street Transportation Department

ROW	Right-of-way
SHPO	Arizona State Historic Preservation Office
SGCN	Species of Greatest Conservation Need
SMT	South Mountain Transmission
SRP	Salt River Project Agricultural Improvement and Power District
SWAP	State Wildlife Action Plan
USFWS	United States Fish and Wildlife Service
WSC	Wildlife of Special Concern