

# South Mountain Transmission Project open house

**Welcome**

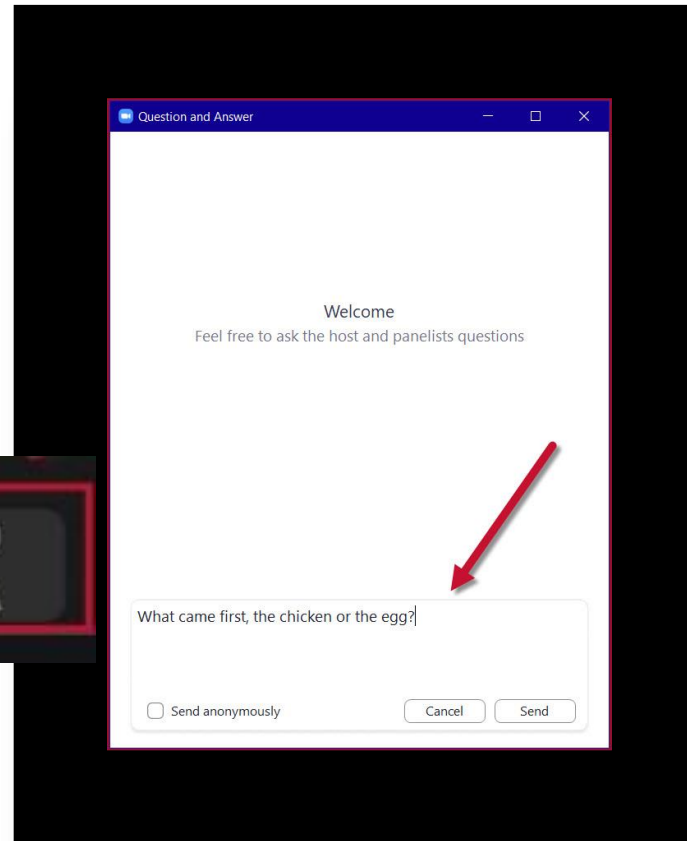
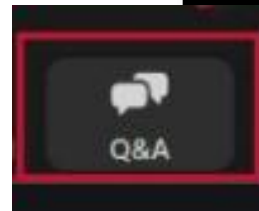
# Agenda

- Introductions
- Project Overview Presentation
- Questions & Answers via Q&A Function

# We want to hear from you.

- Use the Q&A Feature to type in questions
- Ask questions throughout the presentation
- We will respond to as many questions as we can

*Click "Q&A" at  
bottom of screen*



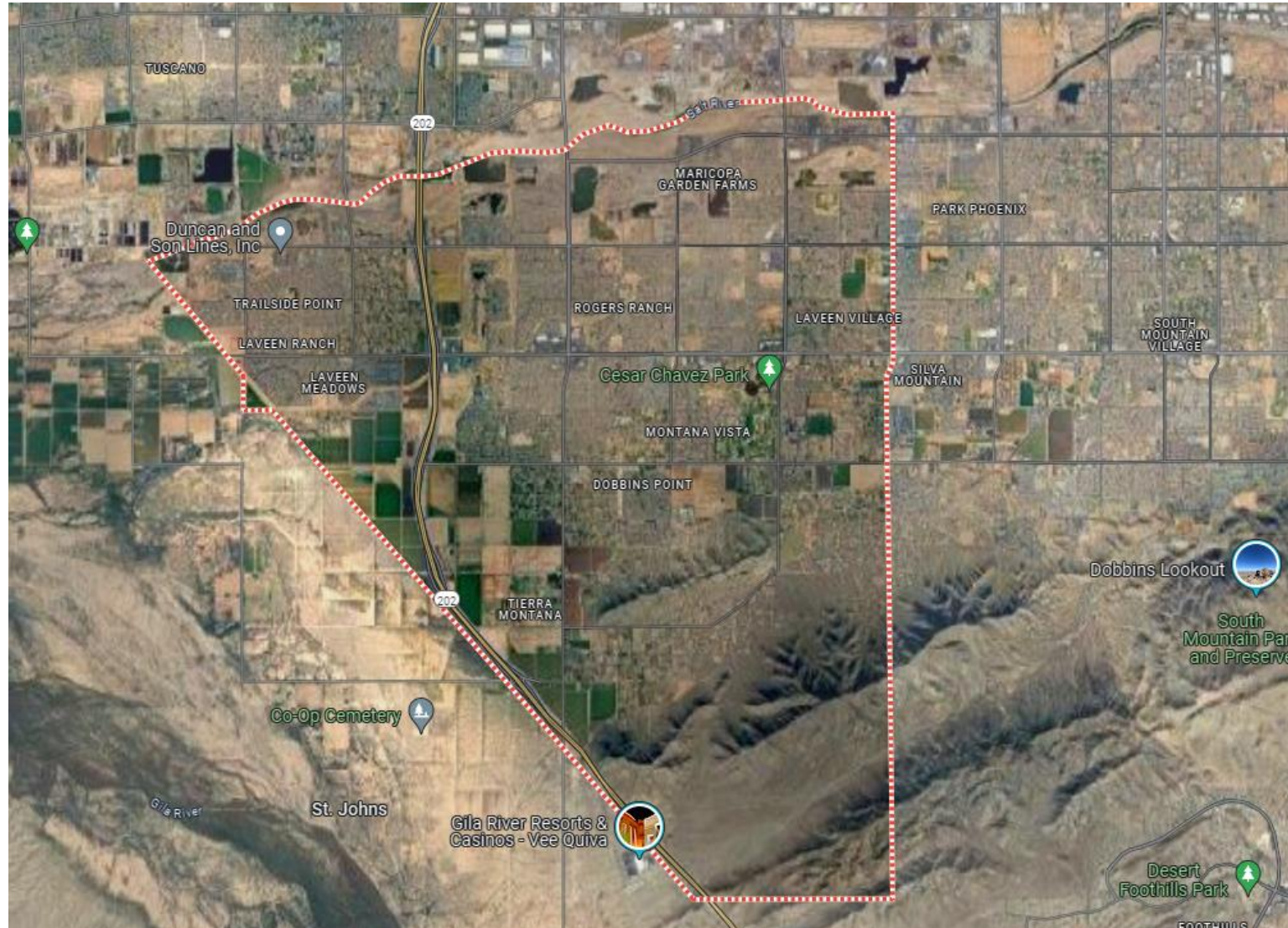
## Feedback Survey Form



[www.srp.net/SMT](http://www.srp.net/SMT)  
1-855-584-1484

# Purpose and Need

# Laveen Boundary

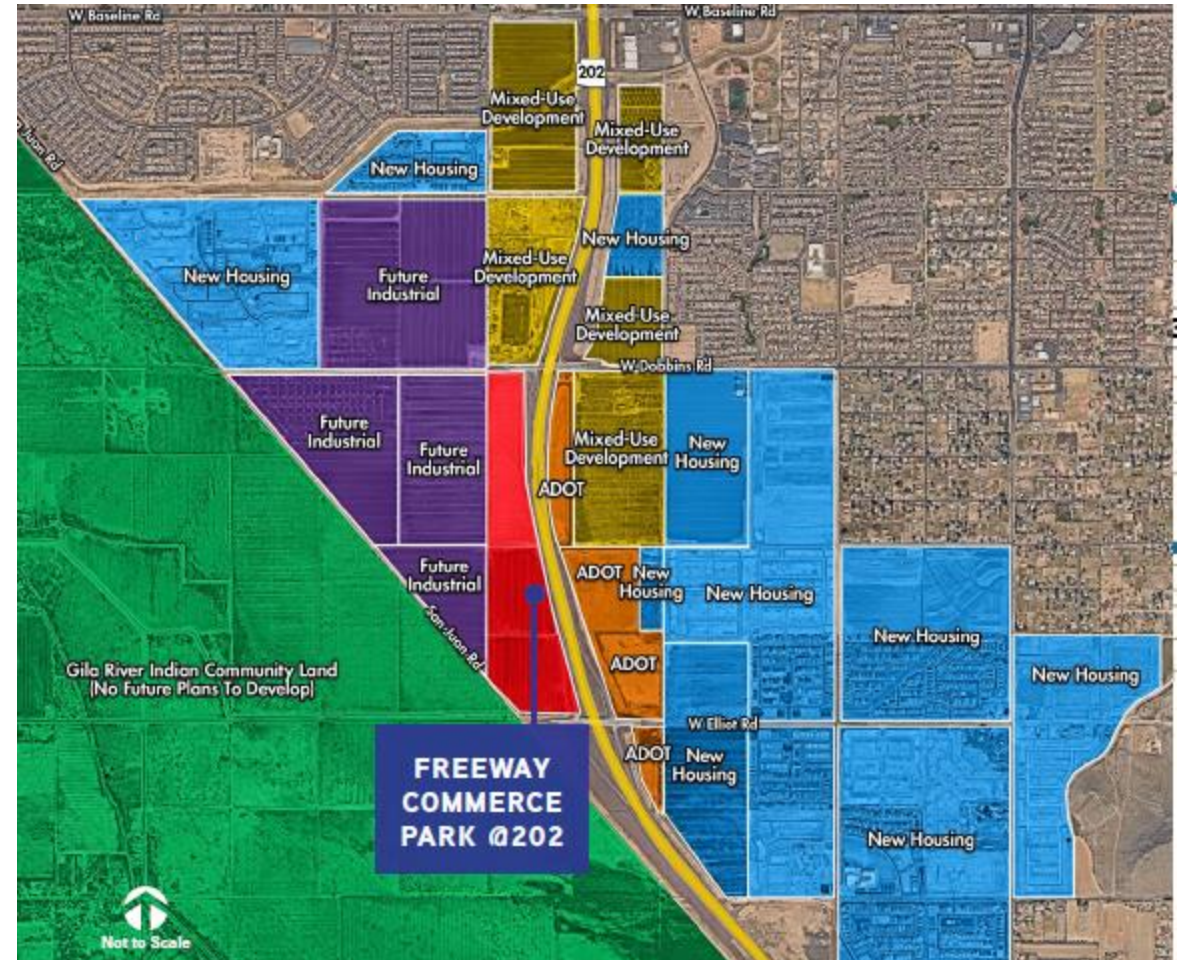


# Purpose and Need

## City of Phoenix High Growth Area

### South Mountain Freeway

- Area planned for various uses: residential, commercial, industrial and tech corridor
- Growth requires high level of reliability
- Current transmission and sub-transmission systems do not have capacity to serve projected load in Laveen



# City of Phoenix South Mountain Freeway Plans

**Important transportation corridor that provides an easily accessible route to the east and west valley.**

- City of Phoenix General Plan characterizes the area in Laveen Village near South Mountain Freeway as a Primary Core, which is defined as an area that can **“support a large concentration of employment and housing opportunities.”**
- Areas west of the South Mountain Freeway are desirable locations for major development including:
  - Industrial
  - Technology
  - Warehouses
  - Office spaces
- Potential for high-wage jobs in technology, bioscience and light manufacturing, finance and other office and industrial type employment





# Proposed Project

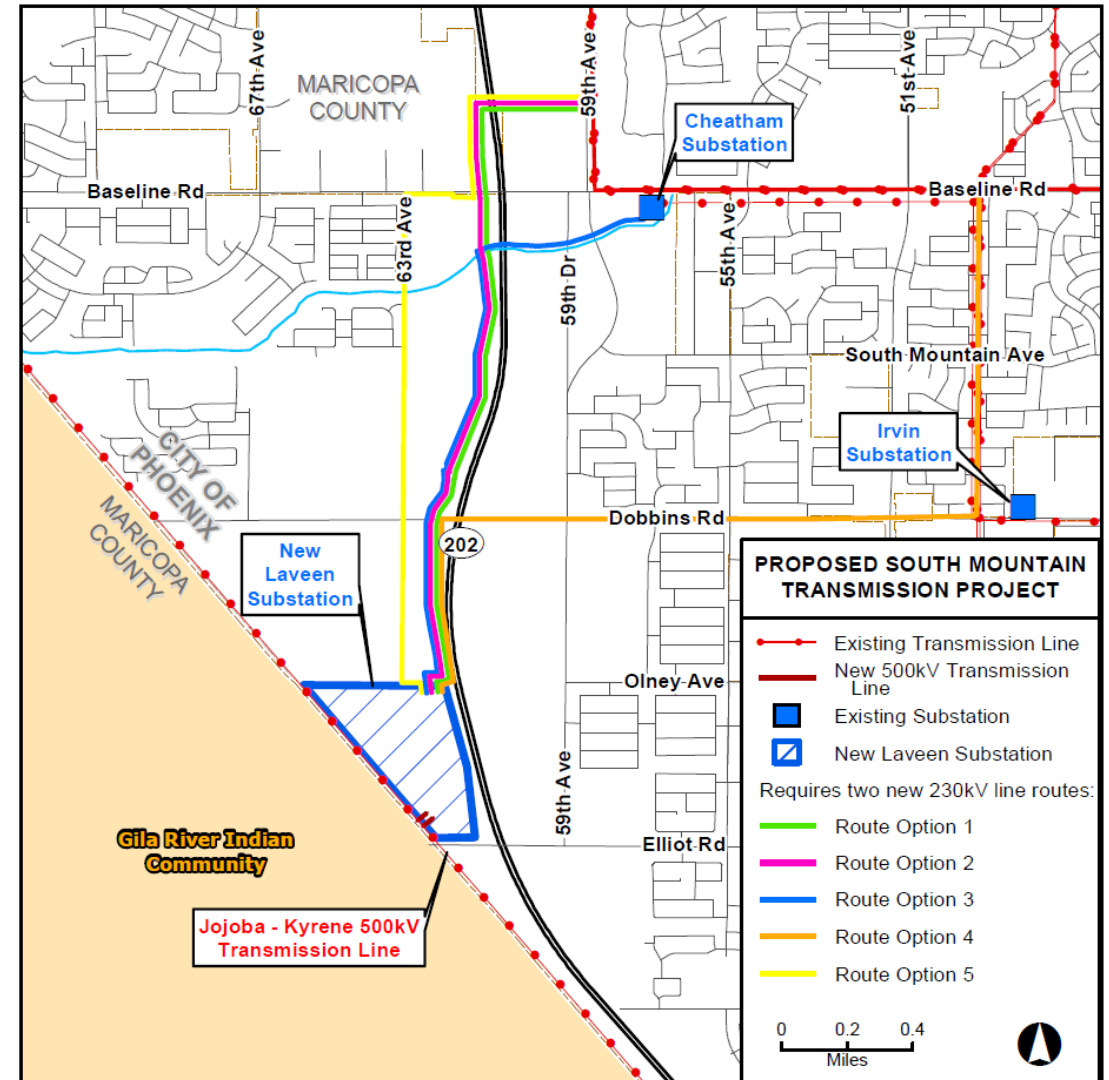
# Project Description

## SRP needs to construct

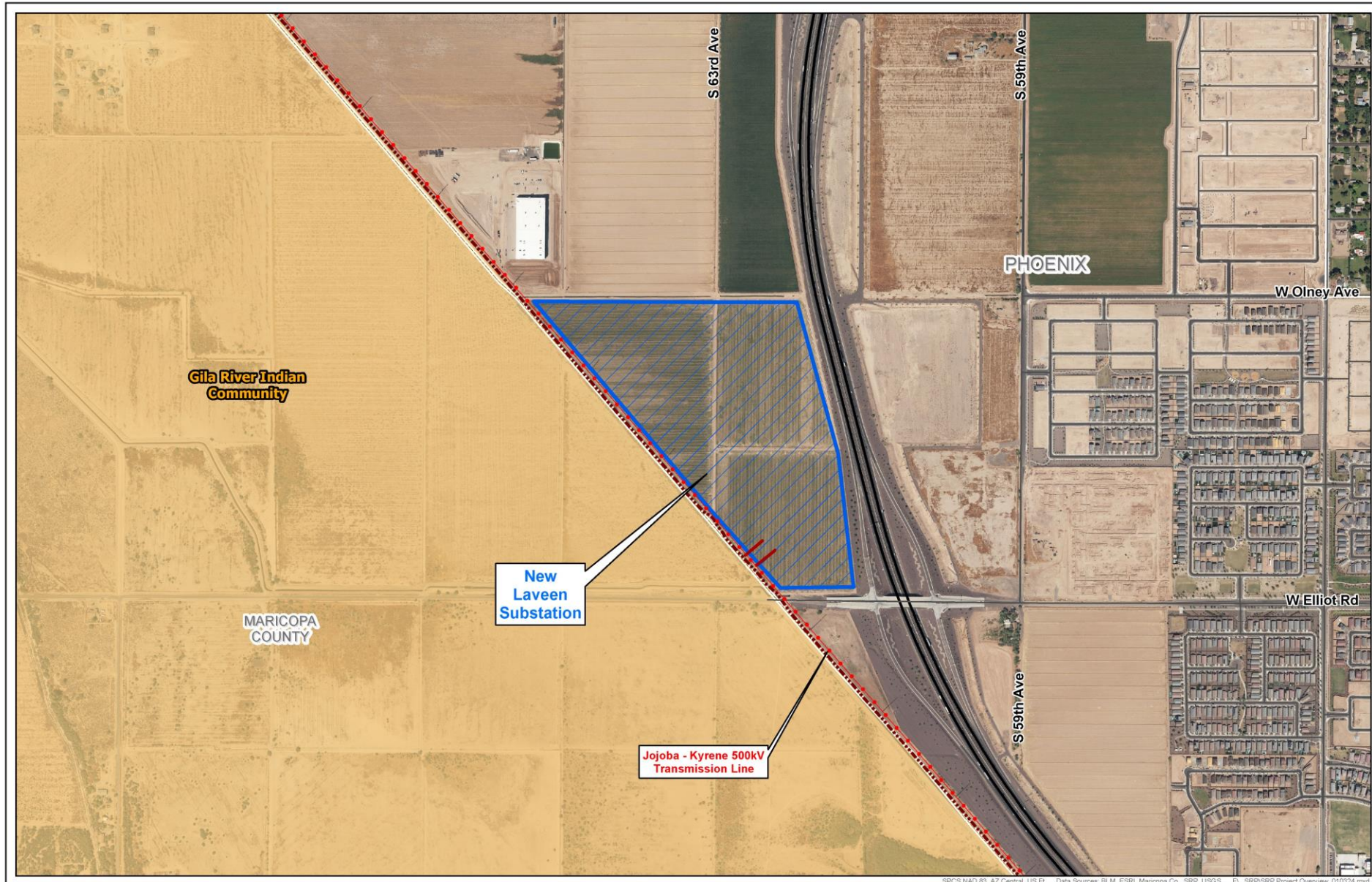
- New 500/230/69 kV substation
- Two separate sets of approximately 4 - 5 miles of new overhead double-circuit 230 kV transmission lines
- 0.5 mile of two sets of single circuit overhead 500 kV transmission lines

## SRP is preparing for a Certificate of Environmental Compatibility (CEC) Application with the Arizona Corporation Commission (ACC)

- Two separate sets of overhead 230 kV transmission lines



# New Laveen 500/230/69 kV Substation



# Substation Example



# Potential Structure Types

**230 kV poles examples  
with 69 kV underbuild**

**Typical height 120-160 feet tall**

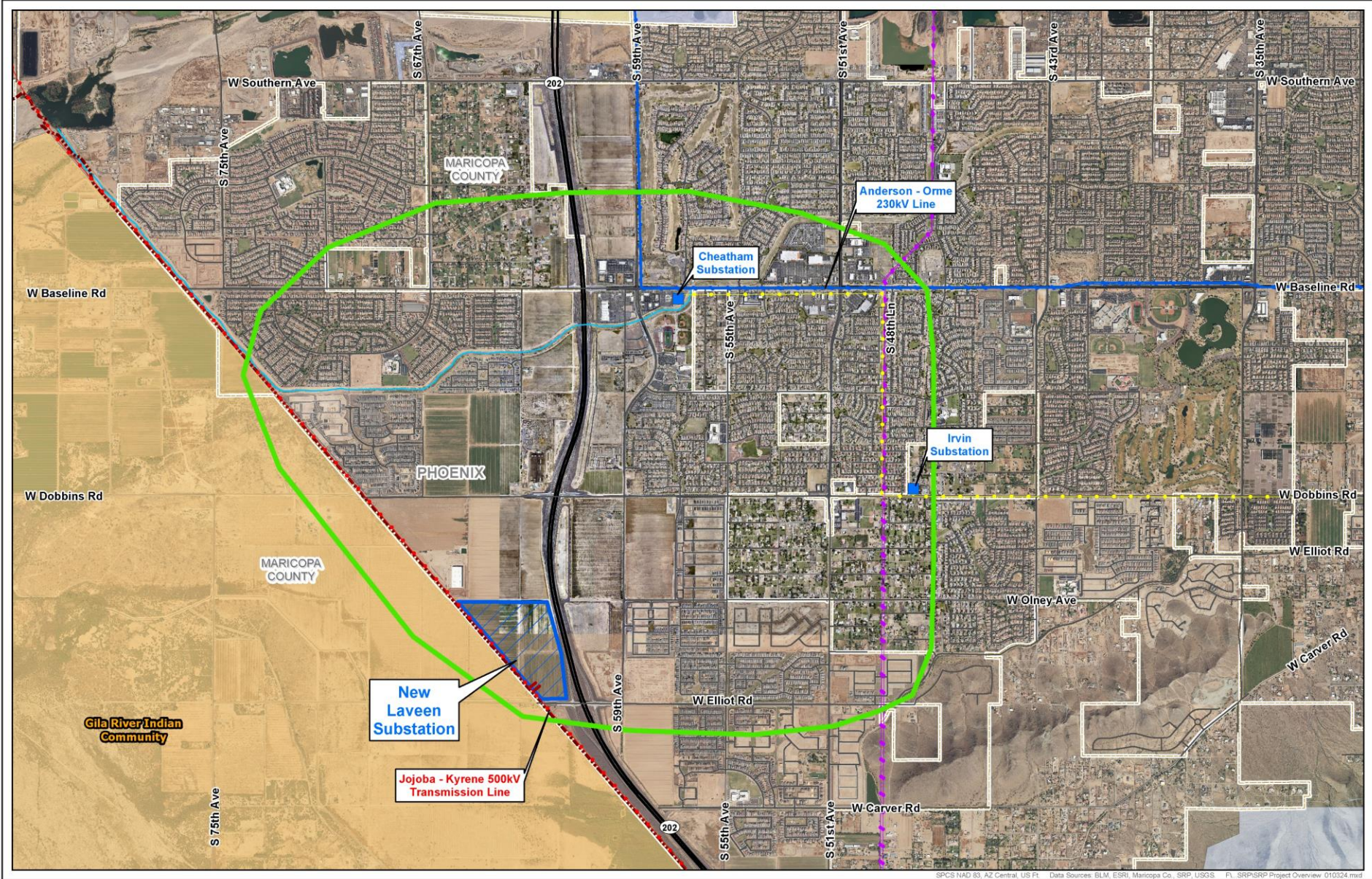
**\*Will require a CEC from ACC**



# Existing 500kV Line Near Future Substation Site



# Project Study Area

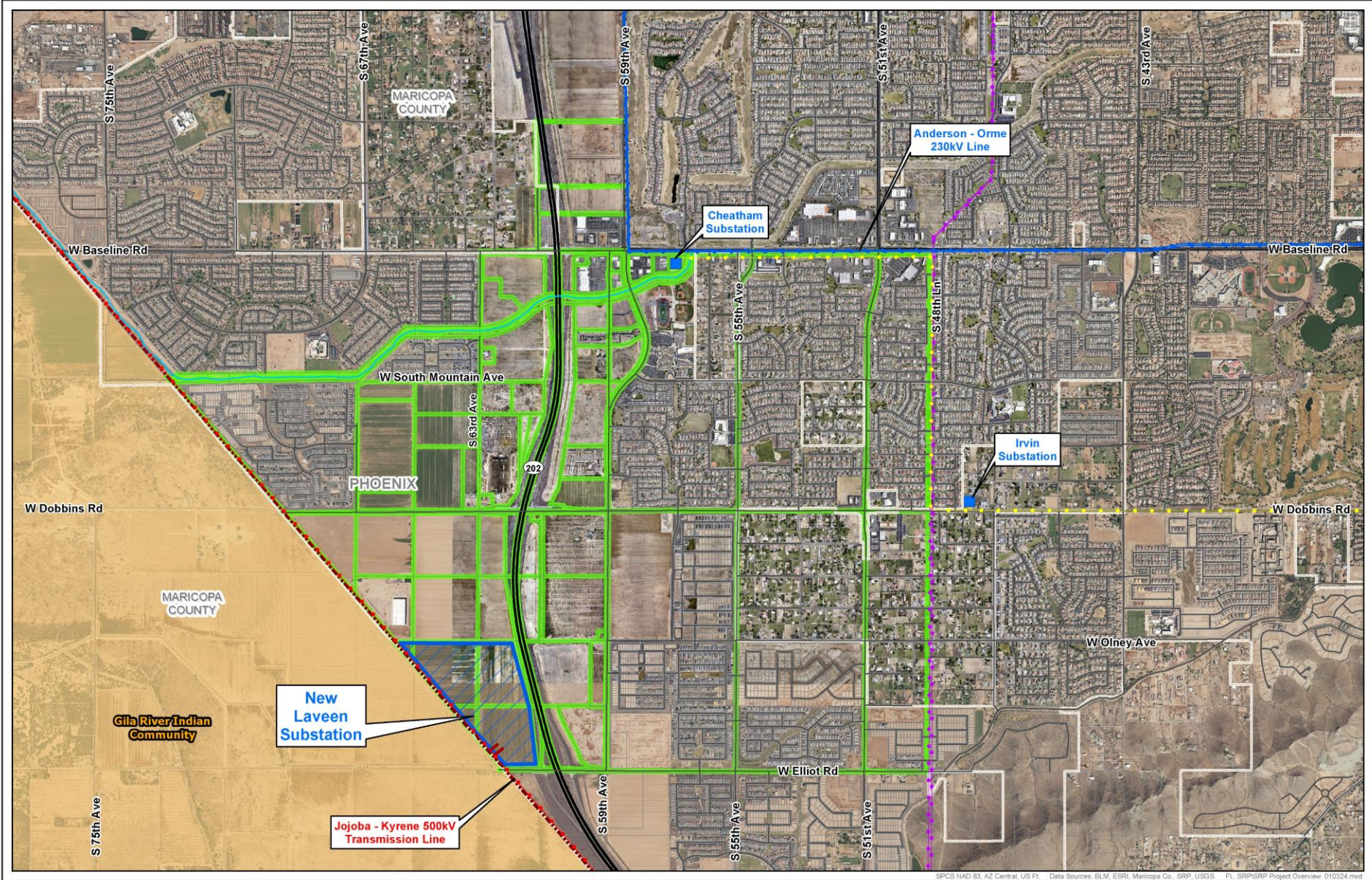


# Existing 230kV Line @ Baseline Rd.



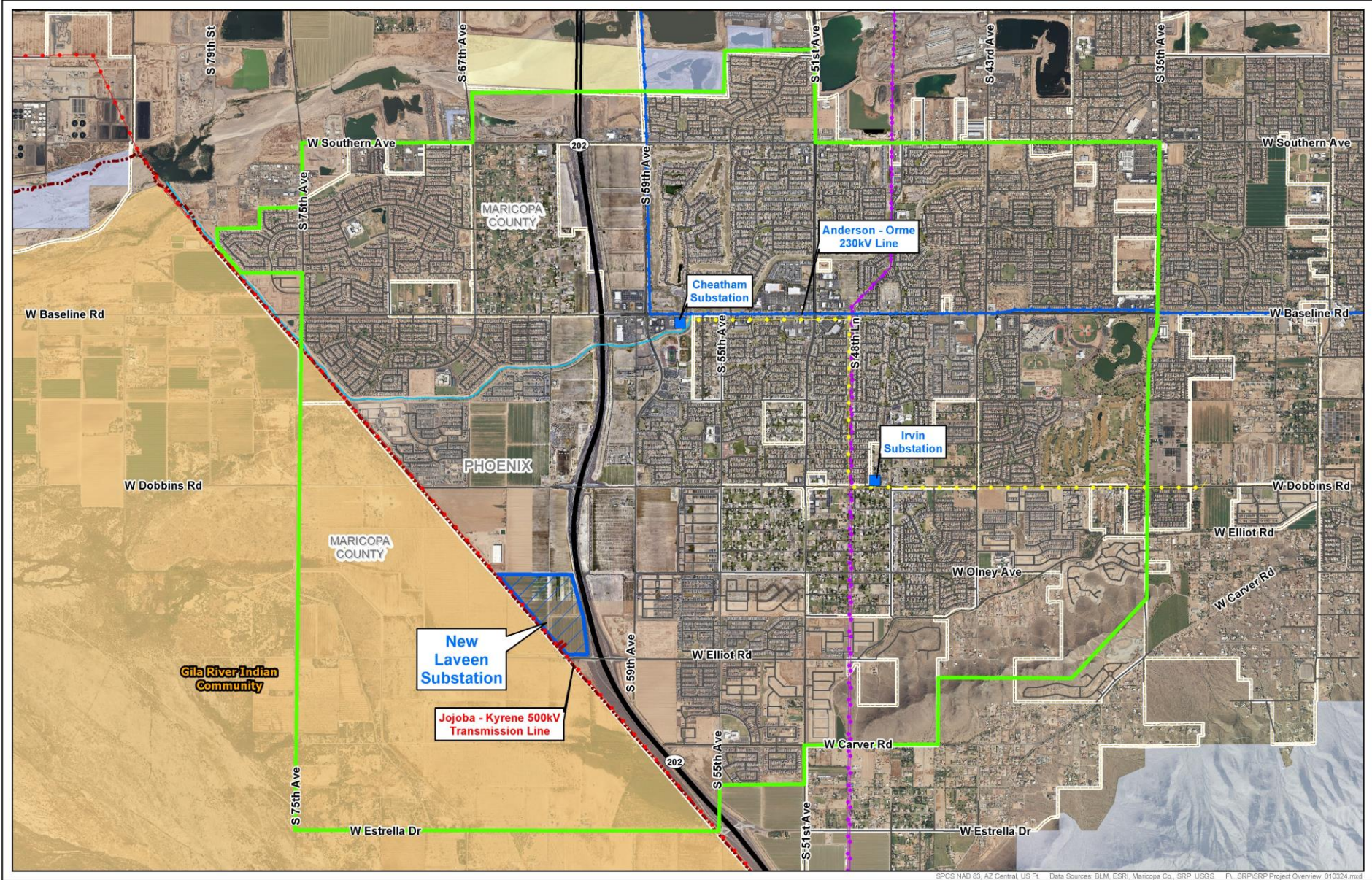


# Routing Opportunities

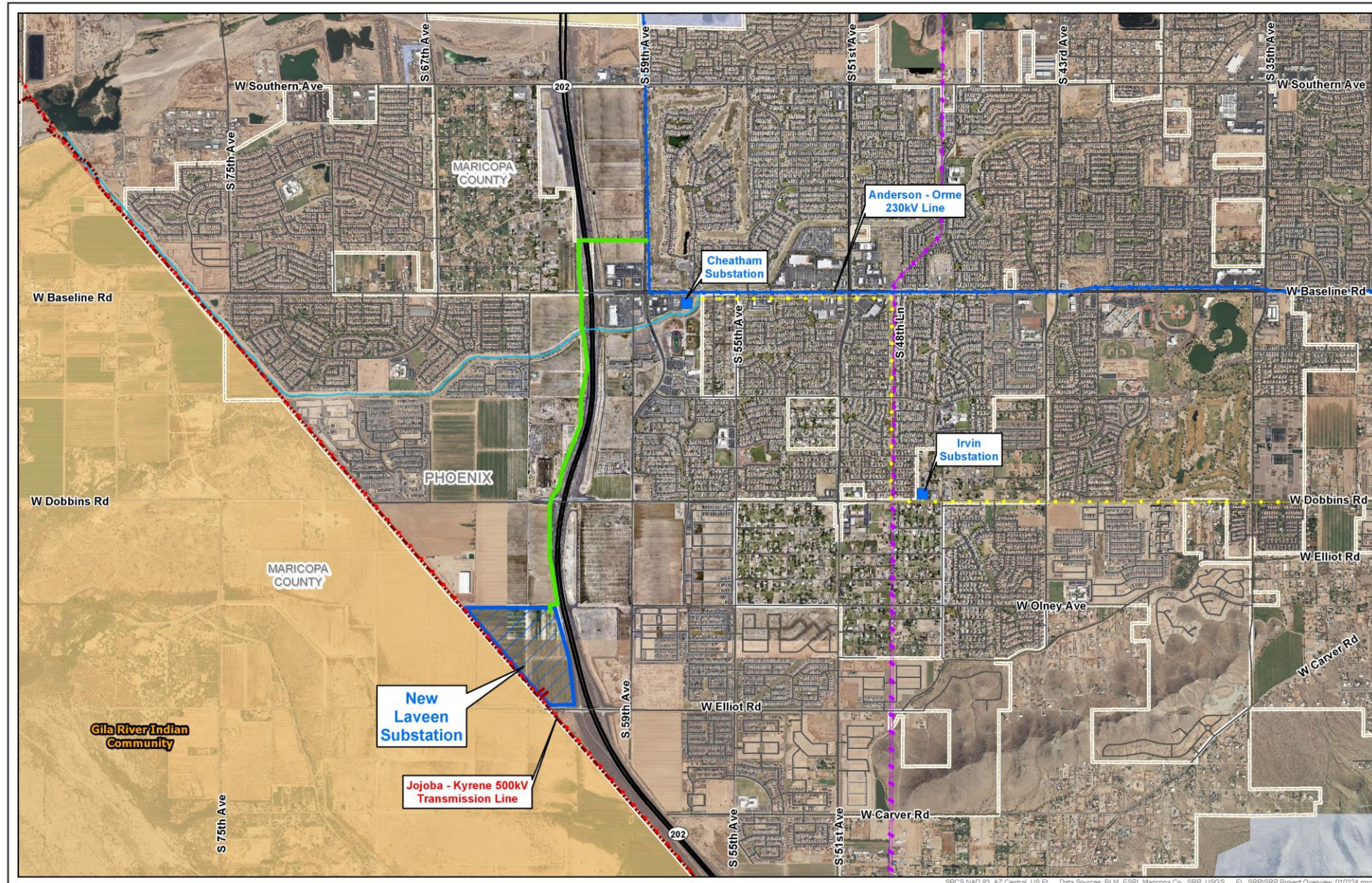


SPCS NAD 83, AZ Central, US Ft. Data Sources: BLM, ESRI, Maricopa Co., SRP, USGS. Ft. SRP/GRP Project Overview 010224.mxd

# Project Notification Area



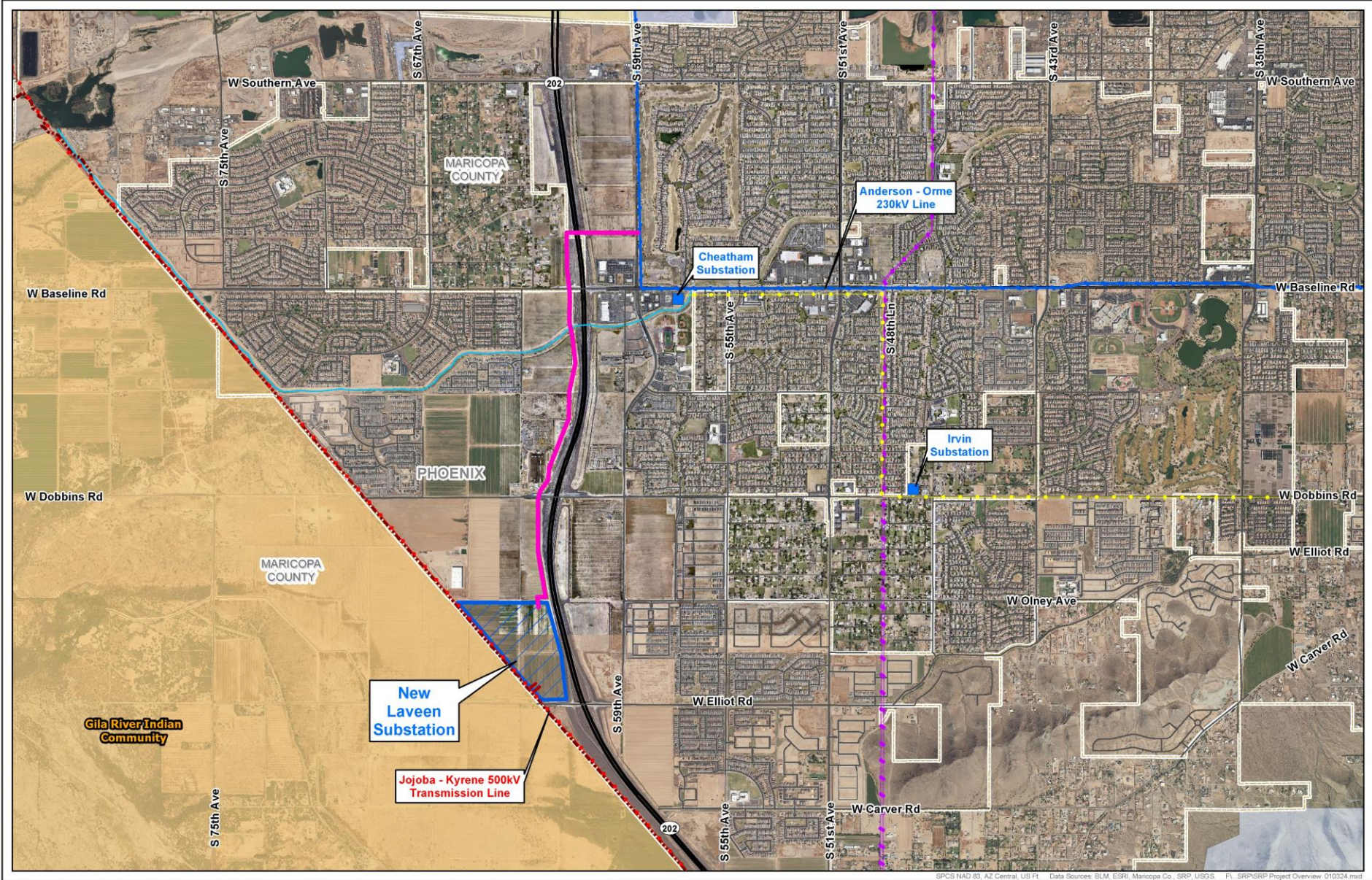
# Route Option 1 (Project Requires Two Route Options)



SPCS NAD 83, AZ Central, US Ft. Data Sources: BLM, ESRI, Maricopa Co., SRP, USGS. Pt. SRP/SRP Project Overview\_010324.mxd

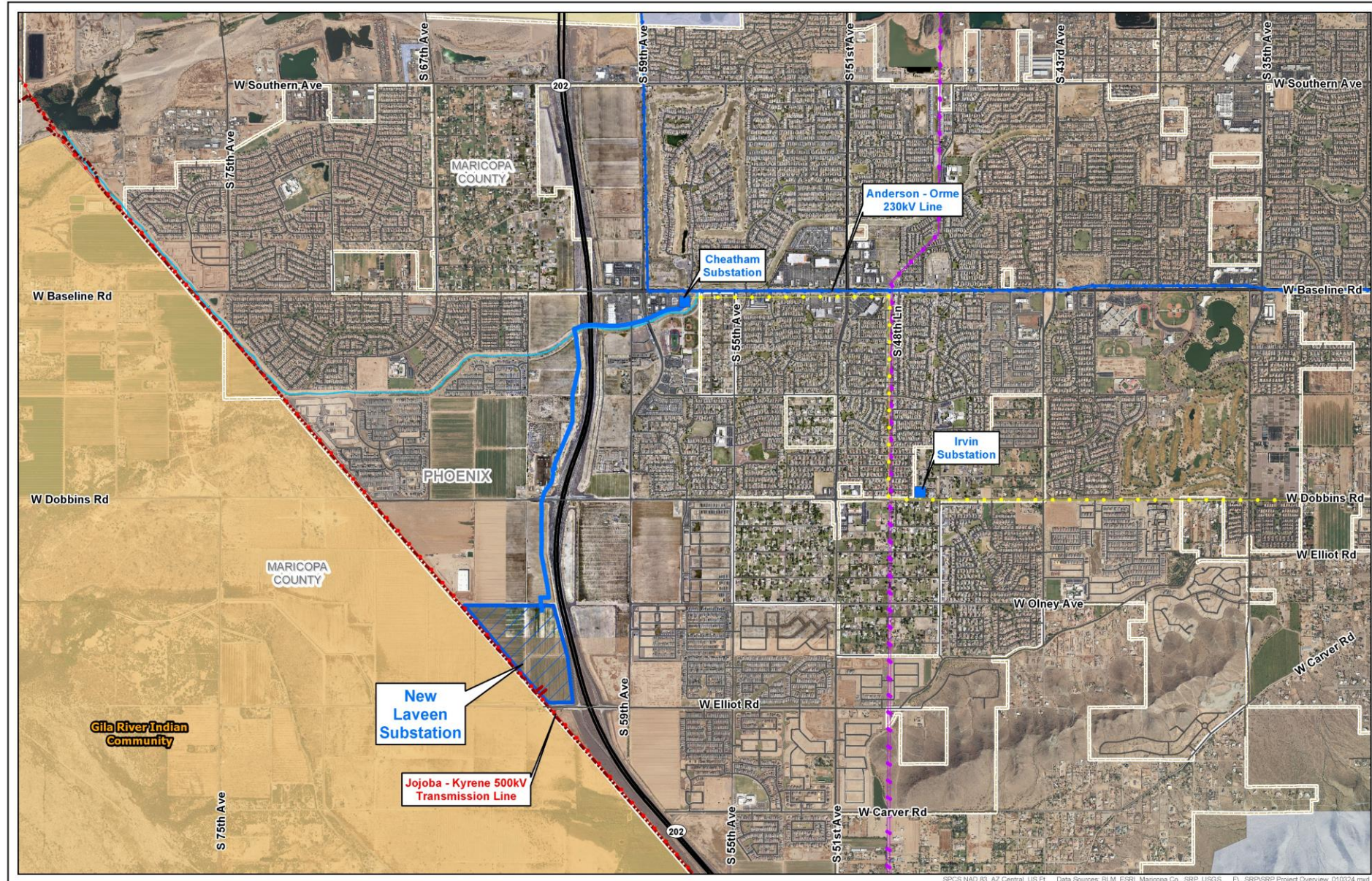
Routes subject to change

# Route Option 2 (Project Requires Two Route Options)



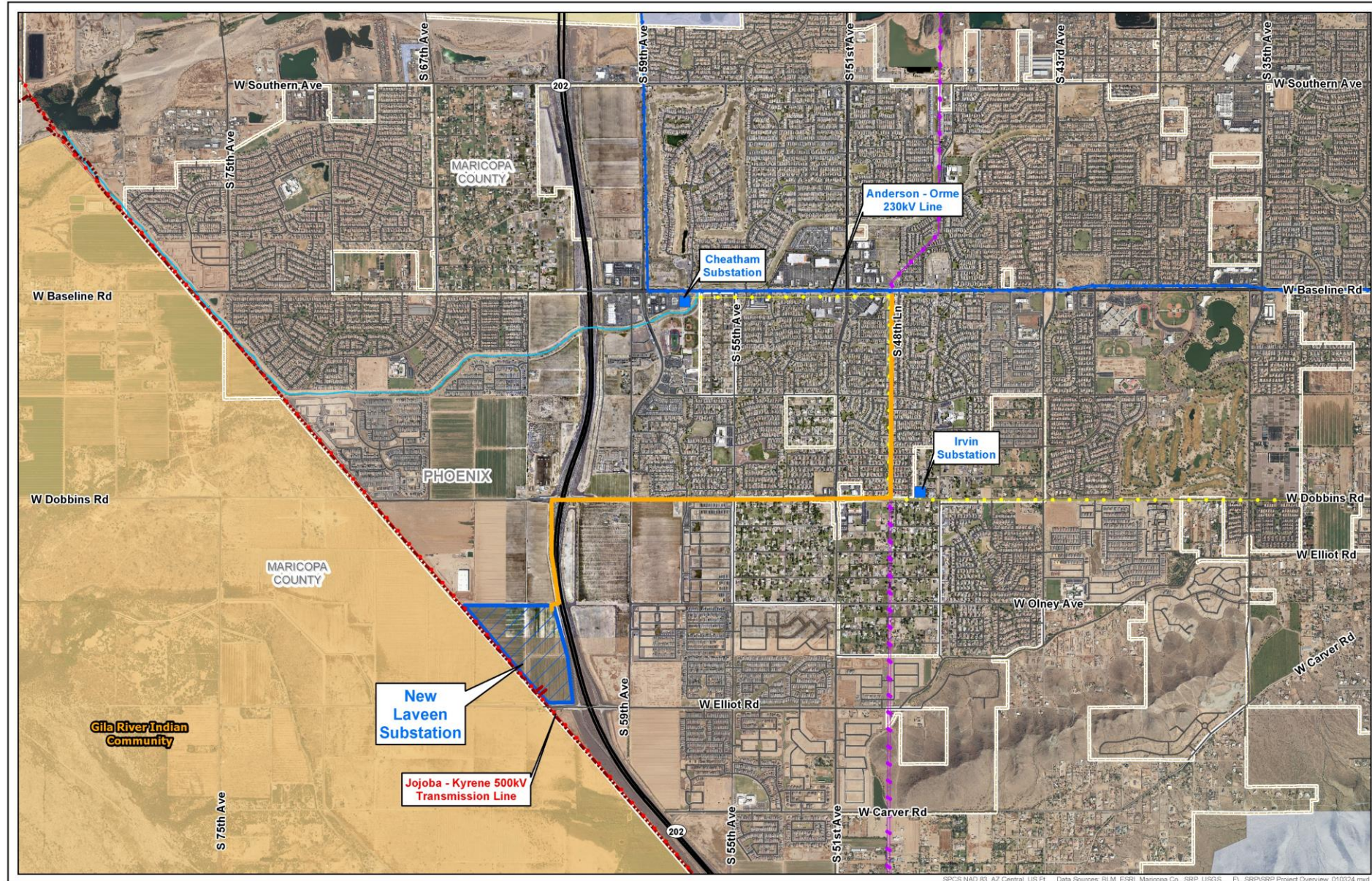
Routes subject to change

# Route Option 3 (Project Requires Two Route Options)



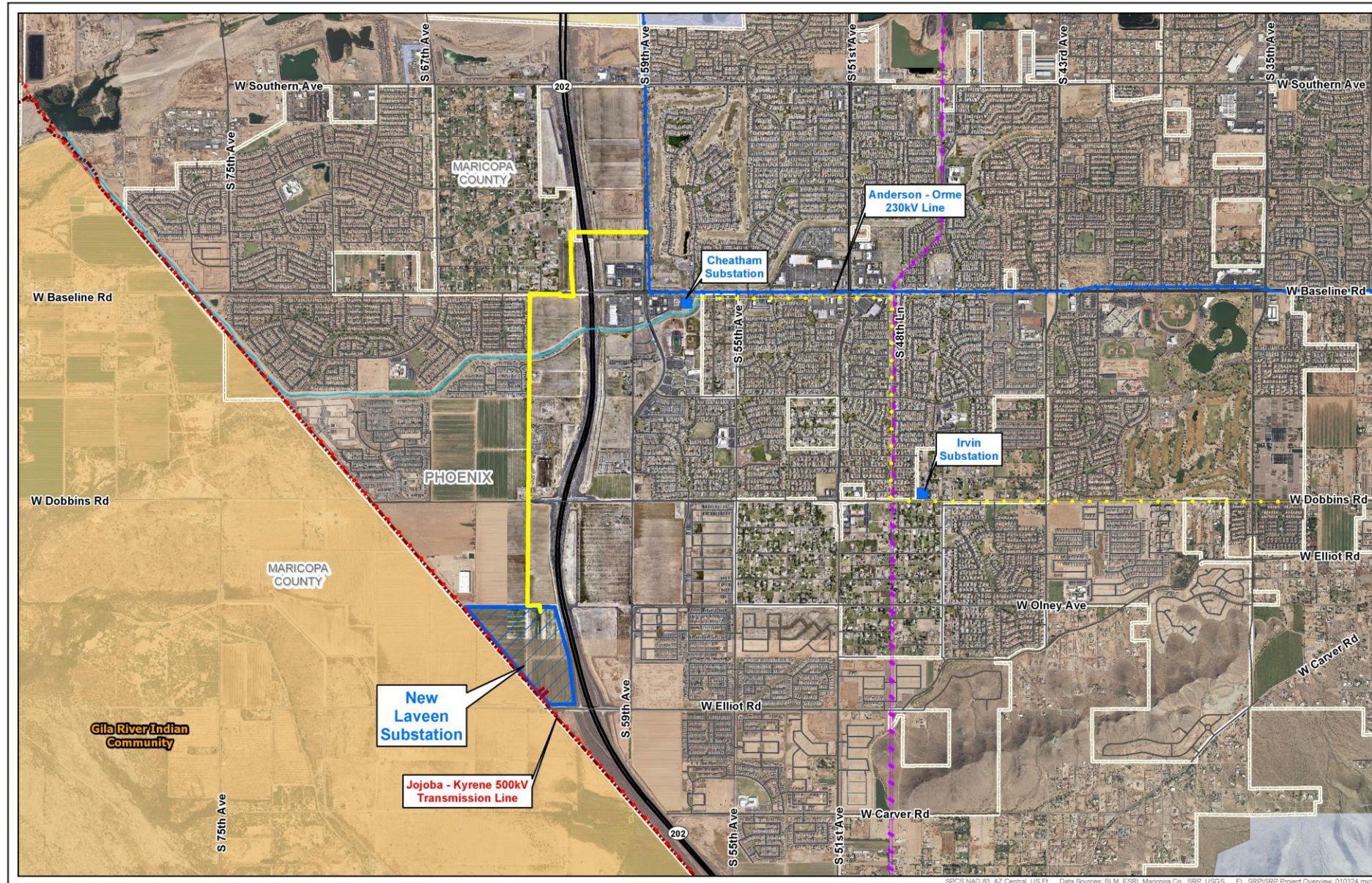
Routes subject to change

# Route Option 4 (Project Requires Two Route Options)



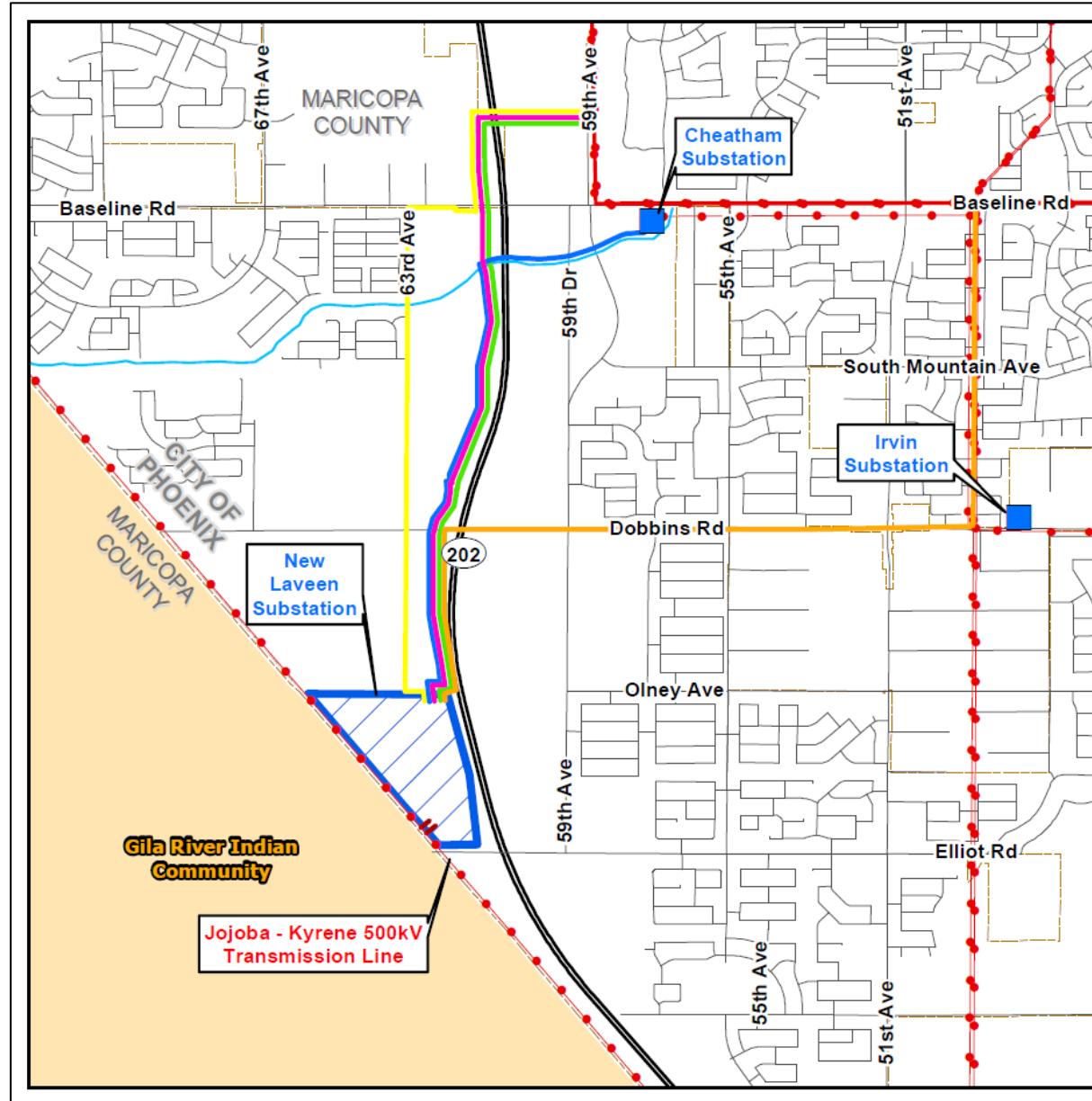
Routes subject to change

# Route Option 5 (Project Requires Two Route Options)



Routes subject to change

# Route Options (Project Requires Two Route Options)

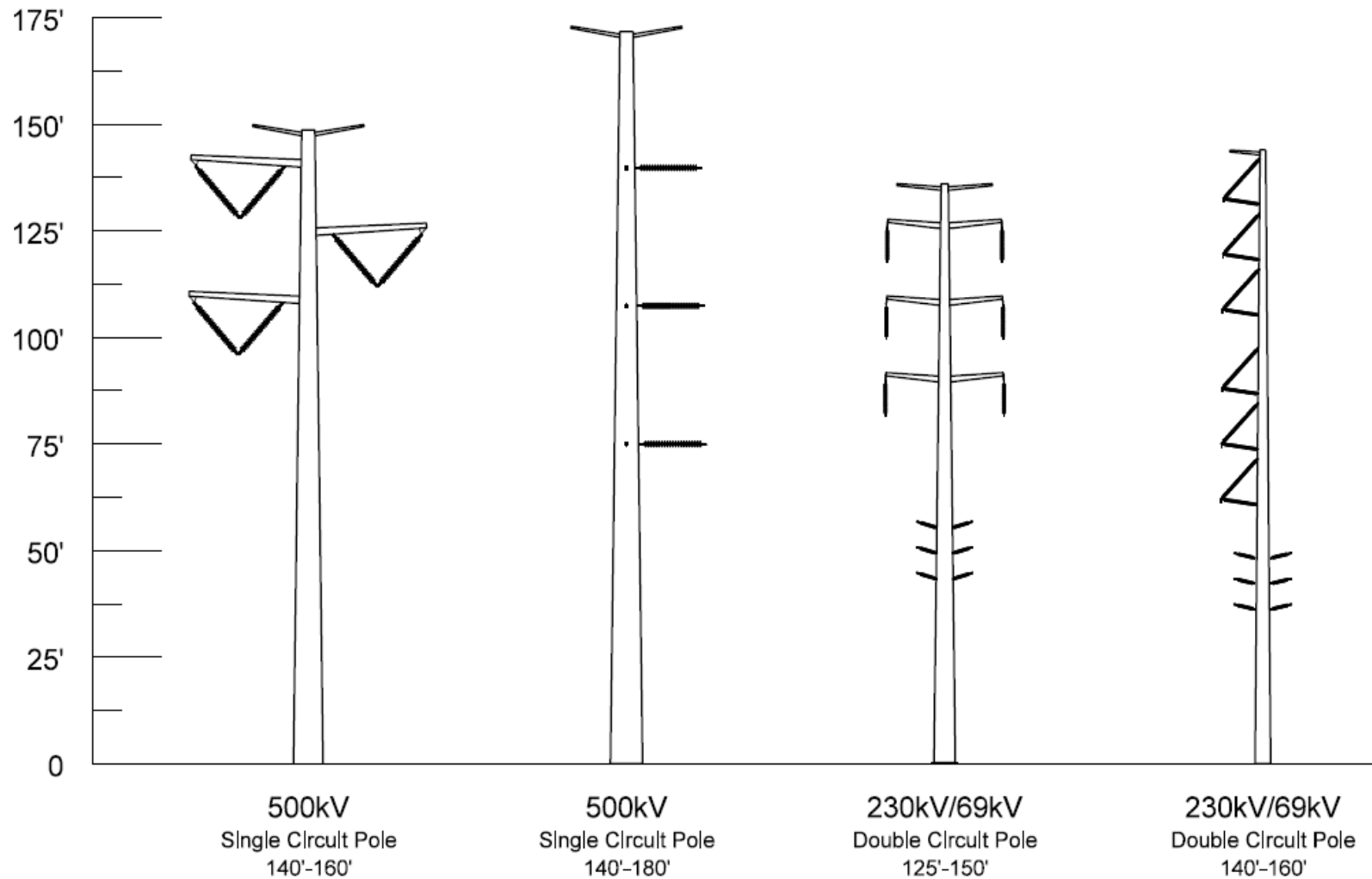


Routes subject to change



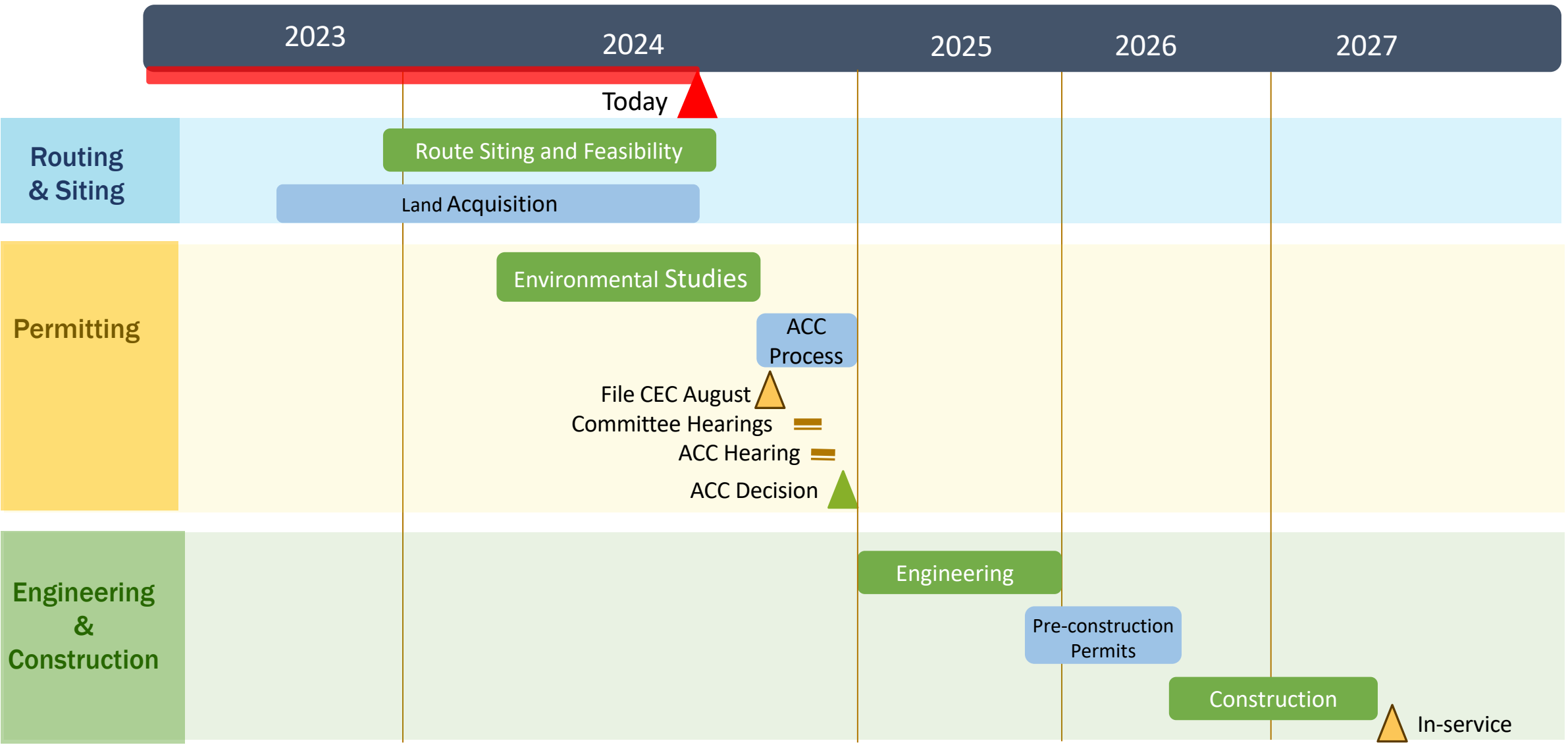
# Engineering and Construction

# Typical Structure Types



*Represents SRP's typical structures. Actual structure types for this project have not yet been determined and may vary depending on location.*

# Development Timeline



# Siting, Environmental and Regulatory Process

# Statutory Requirements: Environmental

Air Quality

Biological Resources

Cultural and Historical Resources

Geology and Soils

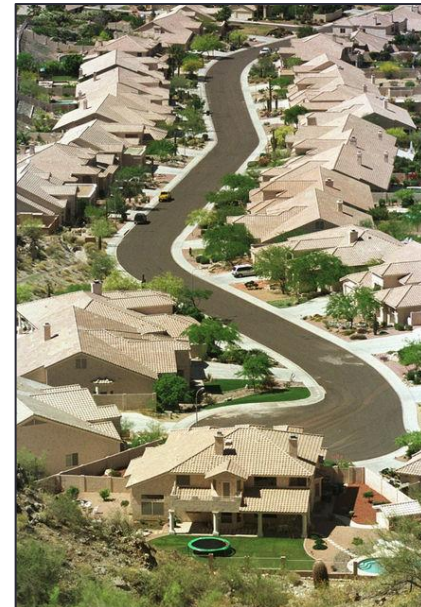
Hydrology

**Land Use**

Noise

**Recreation**

**Visual and Aesthetics**



# Arizona Corporation Commission Siting Process



File Certificate of Environmental Compatibility (CEC)

Anticipated filing August 2024



Siting Committee Public Hearings (30-60 days after filing CEC)

Anticipated Fall 2024



ACC Public Hearings (minimum 30 days after Siting Committee Decision)

By the end of the year



# Opportunities for Public Input



**SRP Website and  
Comment Form  
and Project  
Information Line**  
May 2024



## Phase 1

- Virtual Open Houses  
May 2024
- In-Person Open House  
June 2024

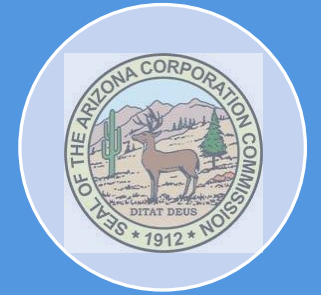


## Phase 2

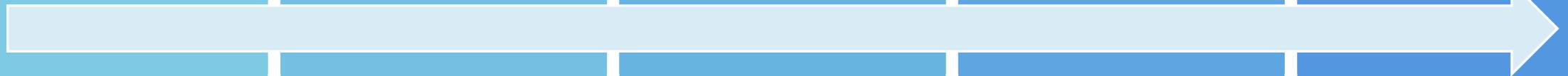
- Virtual Open Houses  
July 2024
- In-Person Open House  
August 2024



**Siting Committee  
Hearings**  
Fall 2024



**ACC Open Meeting**  
End of year



**[www.srp.net/SMT](http://www.srp.net/SMT)**  
**1-855-584-1484**

# Phase 1 Open Houses

## Virtual Open House

May 30, 2024

12:00 pm & 5:30 pm

## In-Person Open House

June 6, 2024

4:30-6:30 pm

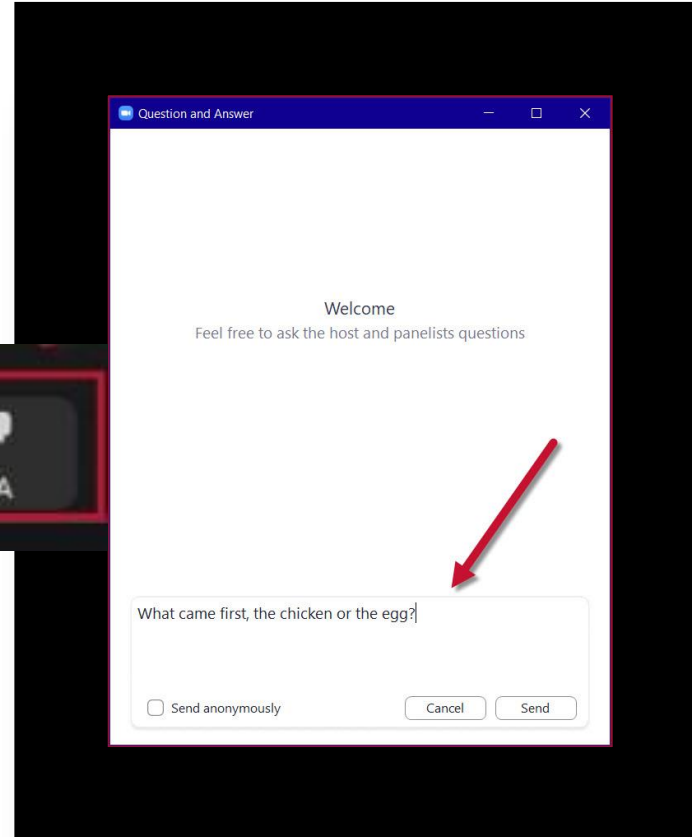
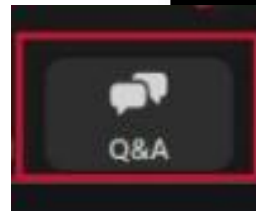
(Betty H. Fairfax High School-cafeteria)



# Questions

- Use the Q&A Feature to type in questions
- Can ask questions throughout the presentation
- We will respond to as many questions as we can

*Click "Q&A" at  
bottom of screen*



[www.srp.net/SMT](http://www.srp.net/SMT)  
1-855-584-1484

**thank you!**